



# Agricultural Prices

ISSN: 1937-4216

Released January 31, 2012, by the National Agricultural Statistics Service (NASS), Agricultural Statistics Board, United States Department of Agriculture (USDA).

## January Farm Prices Received Index Increased 7 Points

The preliminary All Farm Products Index of Prices Received by Farmers in January, at 186 percent, based on 1990-1992=100, increased 7 points (3.9 percent) from December. The Crop Index is up 10 points (5.1 percent) but the Livestock Index decreased 1 point (0.6 percent). Producers received higher prices for cattle, broilers, soybeans, and corn and lower prices for eggs, milk, wheat, and lettuce. In addition to prices, the overall index is also affected by the seasonal change based on a 3-year average mix of commodities producers sell. Increased monthly movement of corn, soybeans, cattle, and rice offset decreased marketings of milk, broilers, cotton, and cottonseed.

The preliminary All Farm Products Index is up 20 points (12 percent) from January 2011. The Food Commodities Index, at 171, increased 2 points (1.2 percent) from last month and 12 points (7.5 percent) from January 2011.

## Prices Paid Index Up 2 Points

The January Index of Prices Paid for Commodities and Services, Interest, Taxes, and Farm Wage Rates (PPITW) is 207 percent of the 1990-1992 average. The index is up 2 points (1.0 percent) from December and 12 points (6.2 percent) above January 2011. Higher prices in January for feeder cattle, interest expenses, taxes, and land rent offset lower prices for complete feeds, LP gas, concentrates, and diesel.

## Prices Received, Prices Paid, and Ratio of Prices Received to Prices Paid Indexes 1990-1992 Base – United States: January 2012 with Comparisons

Index	January 2011	December 2011	January 2012
Prices received by farmers .....	166	179	186
Prices paid by farmers .....	195	205	207
Ratio of prices received to prices paid .....	85	87	90

## Contents

Prices Received by Farmers .....	4
Prices Received Indexes – United States: January 2012 with Comparisons .....	5
Prices Received and Prices Paid Indexes by Month for Selected Groups – United States: 2011 and 2012, 1990-1992 Base .....	5
Received and Paid Indexes, Annual Average – United States: 1990-1992=100 Chart.....	6
Crop Farm Received and Paid Indexes, All Items by Quarter – United States: 1990-1992=100 Chart.....	7
Livestock Farm Received and Paid Indexes All Items by Quarter – United States: 1990-1992=100 Chart.....	7
Received Indexes by Month, Livestock Products, All Products, and All Crops – United States: 1990-1992=100 Chart.....	8
Received Indexes by Month, Food Grains, Feed Grains & Hay, and Oilseeds – United States: 1990-1992=100 Chart.....	8
Received Indexes by Month, Fruit & Nut and Commercial Vegetables – United States: 1990-1992=100 Chart.....	9
Received Indexes by Month, Meat Animal, Dairy Products, and Poultry & Eggs – United States: 1990-1992=100 Chart.....	9
Prices Received for Field Crops and Fruits – United States: January 2012 with Comparisons.....	10
Prices Received for Vegetables and Livestock – United States: January 2012 with Comparisons .....	11
Prices Received for Corn by Month – United States Chart.....	12
Prices Received for Wheat by Month – United States Chart .....	12
Prices Received for Upland Cotton by Month – United States Chart .....	13
Prices Received for Soybeans by Month – United States Chart .....	13
Prices Received for Cattle by Month – United States Chart .....	14
Prices Received for Milk by Month – United States Chart .....	14
Prices Received for Hogs by Month – United States Chart .....	15
Prices Received for Poultry by Month – United States Chart.....	15
Prices Received for All Wheat, Corn, and Soybeans by Month – United States: 2012 with Comparisons.....	16
Prices Received for Beef Cattle and All Hogs by Month – United States: 2012 with Comparisons .....	16
Prices Received for All Wheat – States and United States: January 2012 with Comparisons.....	17
Prices Received for Winter Wheat – States and United States: January 2012 with Comparisons.....	17
Prices Received for Durum Wheat – States and United States: January 2012 with Comparisons.....	18
Prices Received for Spring Wheat – States and United States: January 2012 with Comparisons .....	18
Prices Received for All Barley – States and United States: January 2012 with Comparisons.....	19
Prices Received for Malting Barley – States: January 2012 with Comparisons .....	19
Prices Received for Feed Barley – States: January 2012 with Comparisons .....	19
Prices Received for Corn – States and United States: January 2012 with Comparisons .....	20
Prices Received for Soybeans – States and United States: January 2012 with Comparisons .....	20
Prices Received for Oats – States and United States: January 2012 with Comparisons .....	21
Prices Received for Sorghum Grain – States and United States: January 2012 with Comparisons.....	21
Prices Received for Dry Beans – States and United States: January 2012 with Comparisons .....	22
Prices Received for Peanuts (In-Shell) – States and United States: January 2012 with Comparisons .....	22
Prices Received for Sunflower – States and United States: January 2012 with Comparisons.....	23
Prices Received for Canola – States and United States: January 2012 with Comparisons .....	23
Prices Received for Flaxseed – States and United States: January 2012 with Comparisons .....	23
Prices Received for Upland Cotton and Cottonseed – States and United States: January 2012 with Comparisons .....	24
Prices Received and Farm Marketings for Upland Cotton and Rice – United States: January 2012 with Comparisons .....	24
Prices Received for Hay by Type – States and United States: January 2012 with Comparisons .....	25
Prices Received for Apples – States and United States: January 2012 with Comparisons .....	25
Prices Received for Citrus Fruits by Utilization – States and United States: January 2011 .....	26
Prices Received for Citrus Fruits by Utilization – States and United States: December 2011 .....	27

Prices Received for Citrus Fruits by Utilization – States and United States: January 2012 .....	28
Prices Received for Potatoes – States and United States: January 2012 with Comparisons.....	29
Prices Received for All Milk – States and United States: January 2012 with Comparisons .....	30
Prices Received for Milk Cows – States and United States: January 2012 with Comparisons .....	31
Commodity Parity Prices and Price as Percent of Parity Price – United States: January 2012 with Comparisons .....	32
Commodity Parity Prices – United States: January 2012 with Comparisons .....	33
Marketing Year for Specified Commodities .....	35
Sweet Potato Market Year Average Prices Received – States and United States: Marketing Years 2010 and 2011 .....	35
All Rice Market Year Average Prices Received by Length of Grain – States and United States: Marketing Years 2009 and 2010 .....	36
Prices Received and Farm Marketings for All Rice – United States: Marketing Years 2009-2010 through 2011-2012 .....	36
Prices Received and Farm Marketings for Long Grain Rice – United States: Marketing Years 2009-2010 through 2011-2012 .....	37
Prices Received and Farm Marketings for Medium and Short Grain Rice – United States: Marketing Years 2009-2010 through 2011-2012 .....	37
Parity Price Overview .....	38
Prices Received For Average Base Period – United States: January 1910-December 1914 .....	39
The Parity Ratio .....	40
Prices Received Adjusted Base Prices and Parity Prices – United States: January 2012 .....	41
Prices Received Calendar Year Average Prices and Index used to Calculate Agricultural Commodity Parity Prices – United States: 2002-2011 .....	46
Prices Received Indexes Monthly and Annual Average – United States: 2008-2012 .....	56
Reliability of Prices Received Estimates .....	64
Prices Paid by Farmers.....	65
Prices Paid Indexes and Related Parity Ratios – United States: January 2012 with Comparisons.....	66
Prices Paid Indexes and Annual Weights for Input Components and Sub-Components – United States: January 2012 with Comparisons.....	67
Paid Indexes by Month, All Items and Production Items – United States: 1990-1992=100 Chart .....	68
Paid Indexes, Annual Averages, Production Items, Interest, Taxes, and Wages – United States: 1990-1992=100 Chart .....	68
Paid Indexes by Farm Type, All Items – United States: 1990-1991=100 Chart.....	69
Paid Indexes by Origin, All Production Items – United States: 1990-1992=100 Chart .....	69
Paid Indexes by Non-Farm Sector, Supplies & Repairs, Fertilizer, Machinery, and Fuel – United States: 1990-1992=100 Chart .....	70
Paid Indexes by Month, Feed and Replacement Livestock – United States: 1990-1992=100 Chart.....	70
Feed Price Ratios – United States: January 2012 with Comparisons .....	71
Prices Received Used to Calculate Feed Price Ratios – United States: January 2012 with Comparisons.....	71
Prices Paid for Feeder Livestock – United States: January 2012 with Comparisons.....	71
Grazing Fee Rates for Cattle – States, Regions, and United States: 2010 and 2011 .....	72
Prices Paid Indexes Monthly and Annual Average – United States: 2008-2012 .....	73
Prices Paid Index Sub-Components Monthly and Annual Average – United States: 2008-2012 .....	84
Prices Paid Program Schedule .....	92
Reliability of Prices Paid Estimates .....	93
Information Contacts .....	94

## Prices Received by Farmers

The January All Farm Products Index is 186 percent of its 1990-1992 base, up 3.9 percent from the December index and 12 percent above the January 2011 index.

**All crops:** The January index, at 208, increased 5.1 percent from December and 10 percent above January 2011. Index increases for feed grains & hay and potatoes & dry beans more than offset index decreases for commercial vegetables, food grains, fruits & nuts, and oilseeds.

**Food grains:** The January index, at 225, declined 4.3 percent from the previous month but is 2.3 percent above a year ago. The January all wheat price, at \$6.86 per bushel, is down 33 cents from December but 17 cents above January 2011.

**Feed grains & hay:** The January index, at 255, is up 0.8 percent from last month and 22 percent above a year ago. The corn price, at \$5.90 per bushel, is up 4 cents from last month and 96 cents above January 2011. The all hay price, at \$172 per ton, decreased \$5 from December but is \$60.00 higher than last January. Sorghum grain, at \$10.40 per cwt, is 10 cents less than December but 91 cents above January last year.

**Cotton, Upland:** The January index, at 144, is down 1.4 percent from December but 6.7 percent above last year. The January price, at 87.4 cents per pound, declined 1.1 cents from the previous month but is 5.3 cents above last January.

**Oilseeds:** The January index, at 211, is down 0.5 percent from December but is 1.9 percent higher than January 2011. The soybean price, at \$11.70 per bushel, increased 20 cents from December and is 10 cents higher than January 2011.

**Fruits & nuts:** The January index, at 154, is down 1.9 percent from December but 2.7 percent higher than a year ago. Price decreases for apples, grapefruit, and strawberries more than offset price increases for oranges and lemons.

**Commercial vegetables:** The January index, at 120, is down 12 percent from last month and 38 percent below January 2011. Lower prices for lettuce and broccoli during January more than offset higher tomato, celery, and snap bean prices.

**Potatoes & dry beans:** The January index, at 175, is up 4.2 percent from last month and 15 percent above January 2011. The all potato price, at \$9.08 per cwt, is unchanged from December and last January. The all dry bean price, at \$45.80 per cwt, is up \$4.00 from the previous month and \$19.60 above January 2011.

**Livestock and products:** The January index, at 156, declined 0.6 percent from last month but is 14 percent higher than January 2011. Compared with a year ago, prices for cattle, milk, broilers, hogs, calves, turkeys, and eggs increased.

**Meat animals:** The January index, at 161, is up 3.2 percent from last month and 15 percent higher than last year. The January hog price, at \$62.40 per cwt, is \$1.10 lower than December but increased \$6.60 from a year ago. The January beef cattle price of \$124 per cwt is up \$4.00 from last month and \$17.00 from January 2011.

**Dairy products:** The January index, at 147, is down 3.3 percent from a month ago but 15 percent higher than January last year. The January all milk price of \$19.20 per cwt is down 60 cents from last month but is \$2.50 higher than January 2011.

**Poultry & eggs:** The January index, at 152, declined 6.2 percent from December but is 7.8 percent higher than a year ago. The January market egg price, at 66.7 cents per dozen, is 43.3 cents less than December but 0.7 cents higher than January 2011. The January broiler price, at 49.0 cents per pound, is up 2.0 cents from December and 4.0 cents above a year ago. The January turkey price, at 66.0 cents per pound, is down 5.4 cents from the previous month but is up 9.6 cents from a year earlier.

## Prices Received Indexes – United States: January 2012 with Comparisons

[Revised historical price indexes for months not shown are available at [www.nass.usda.gov](http://www.nass.usda.gov)]

Index	1910-1914 Base				1990-1992 Base		
	1990-1992 Average	January 2011	December 2011	January 2012	January 2011	December 2011	January 2012
	(percent)	(percent)	(percent)	(percent)	(percent)	(percent)	(percent)
All products .....	639	1054	1136	1180	166	179	186
All crops .....	500	935	981	1031	189	198	208
Food grains .....	325	696	745	714	220	235	225
Feed grains & hay .....	363	745	902	908	209	253	255
Cotton, Upland .....	517	695	749	740	135	146	144
Tobacco .....	1263	1491	1566	1566	99	104	104
Oilseeds .....	554	1132	1164	1155	207	212	211
Fruits & nuts .....	716	1044	1095	1074	150	157	154
Commercial vegetables .....	698	1384	975	857	194	136	120
Potatoes & dry beans .....	540	770	853	887	152	168	175
Other crops .....	493	643	643	644	131	131	131
Livestock and products .....	768	1052	1201	1193	137	157	156
Meat animals .....	1021	1421	1594	1638	140	156	161
Dairy products .....	799	1028	1218	1181	128	152	147
Poultry & eggs .....	282	395	454	427	141	162	152
Food commodities .....	(NA)	(NA)	(NA)	(NA)	159	169	171

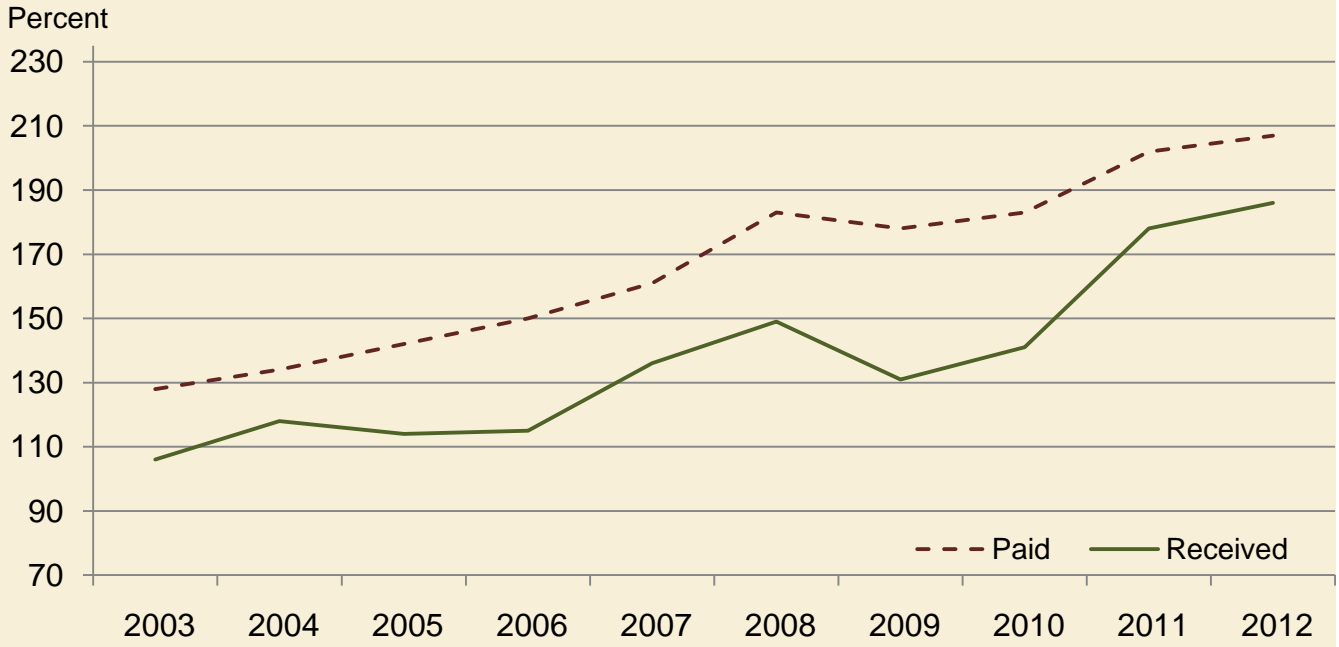
(NA) Not available.

## Prices Received and Prices Paid Indexes by Month for Selected Groups – United States: 2011 and 2012, 1990-1992 Base

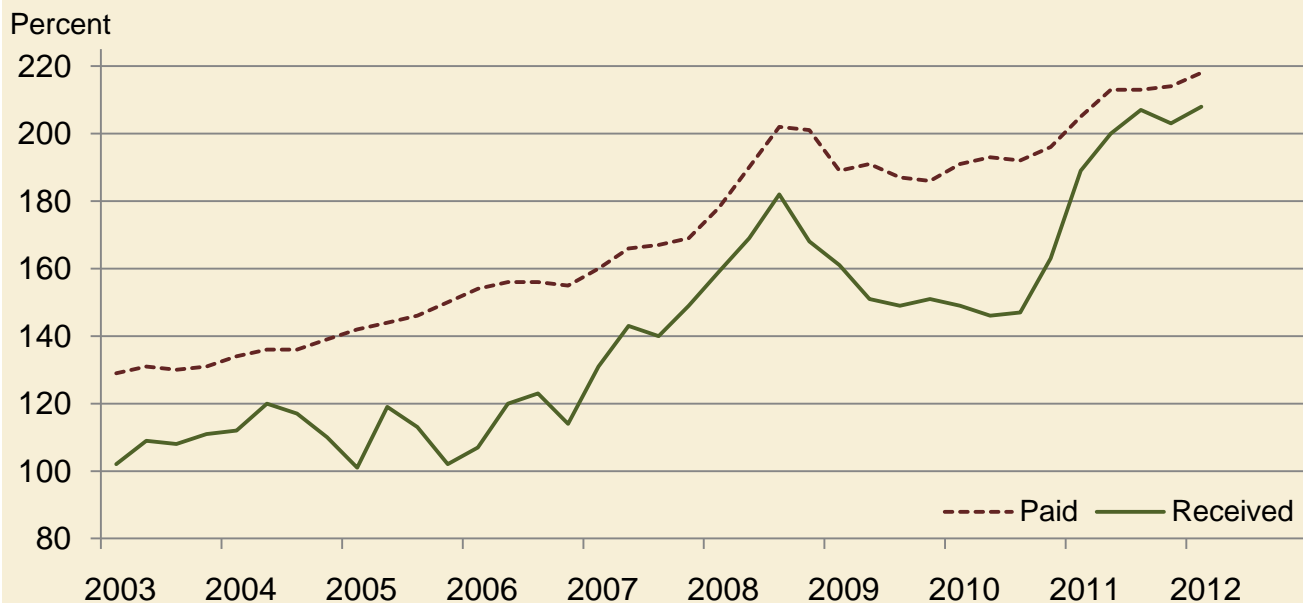
[Revised historical price indexes for months not shown are available at [www.nass.usda.gov](http://www.nass.usda.gov). Blank data cells indicate estimation period has not yet begun]

Month	Index of prices received						Index of prices paid			
	All farm products		All crops		Livestock and products		All items		Production items	
	2011	2012	2011	2012	2011	2012	2011	2012	2011	2012
	(percent)	(percent)	(percent)	(percent)	(percent)	(percent)	(percent)	(percent)	(percent)	(percent)
January .....	166	186	189	208	137	156	195	207	204	219
February .....	171		200		144		197		207	
March .....	173		198		152		201		211	
April .....	176		200		156		203		215	
May .....	175		203		152		203		215	
June .....	180		209		153		203		215	
July .....	181		207		155		204		216	
August .....	183		209		158		204		216	
September .....	179		203		152		204		216	
October .....	184		203		154		204		216	
November .....	184		206		157		205		218	
December .....	179		198		157		205		217	

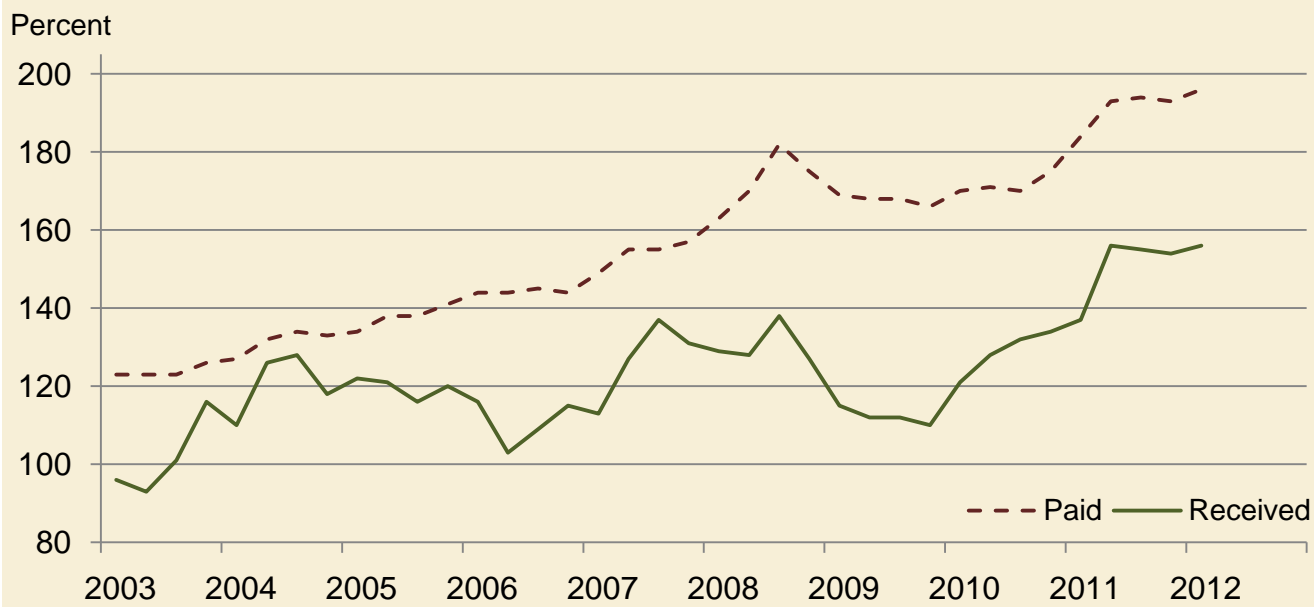
# Received and Paid Indexes, Annual Average – United States: 1990-1992=100



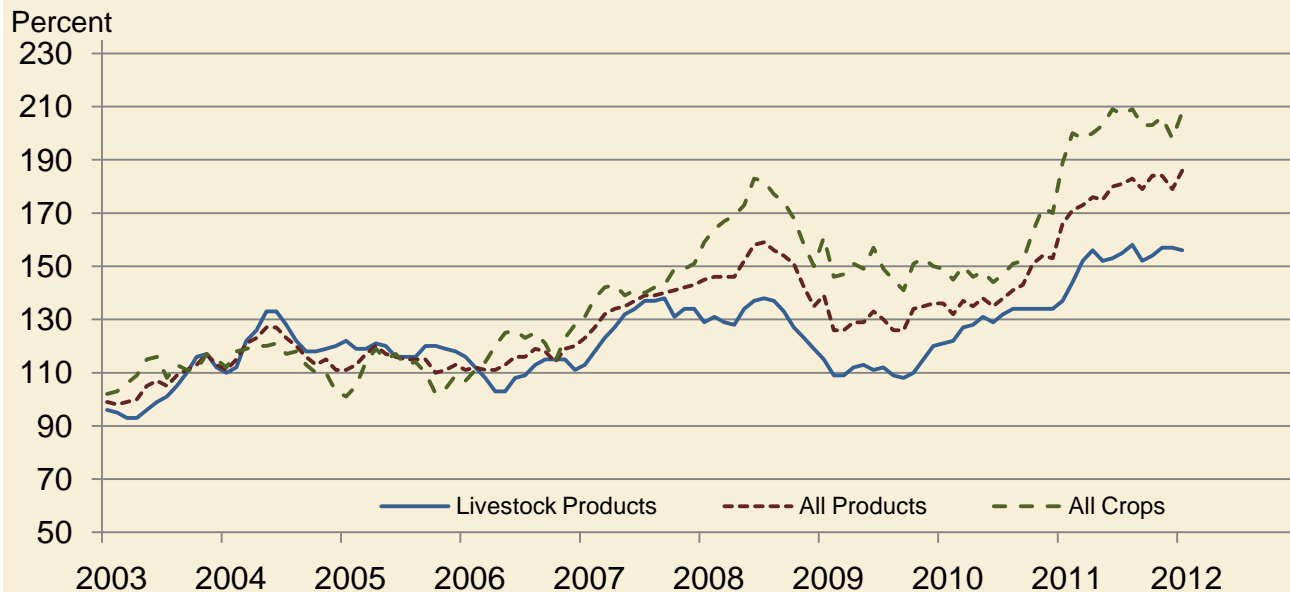
### Crop Farm Received and Paid Indexes, All Items by Quarter – United States: 1990-1992=100



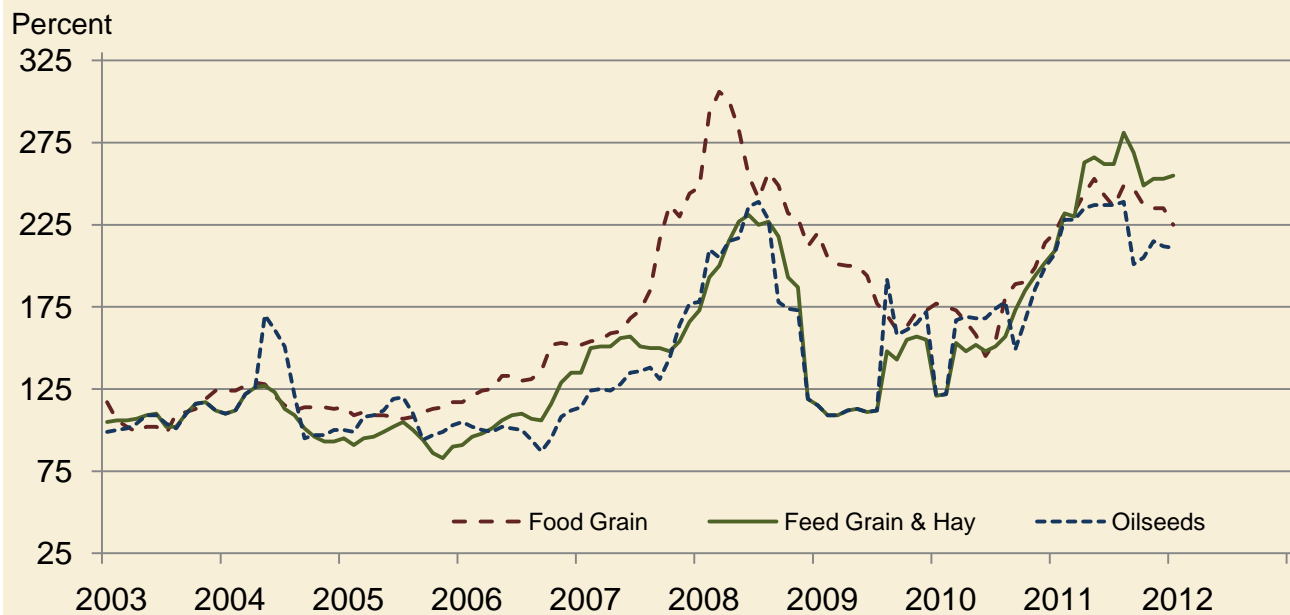
### Livestock Farm Received and Paid Indexes, All Items by Quarter – United States: 1990-1992=100



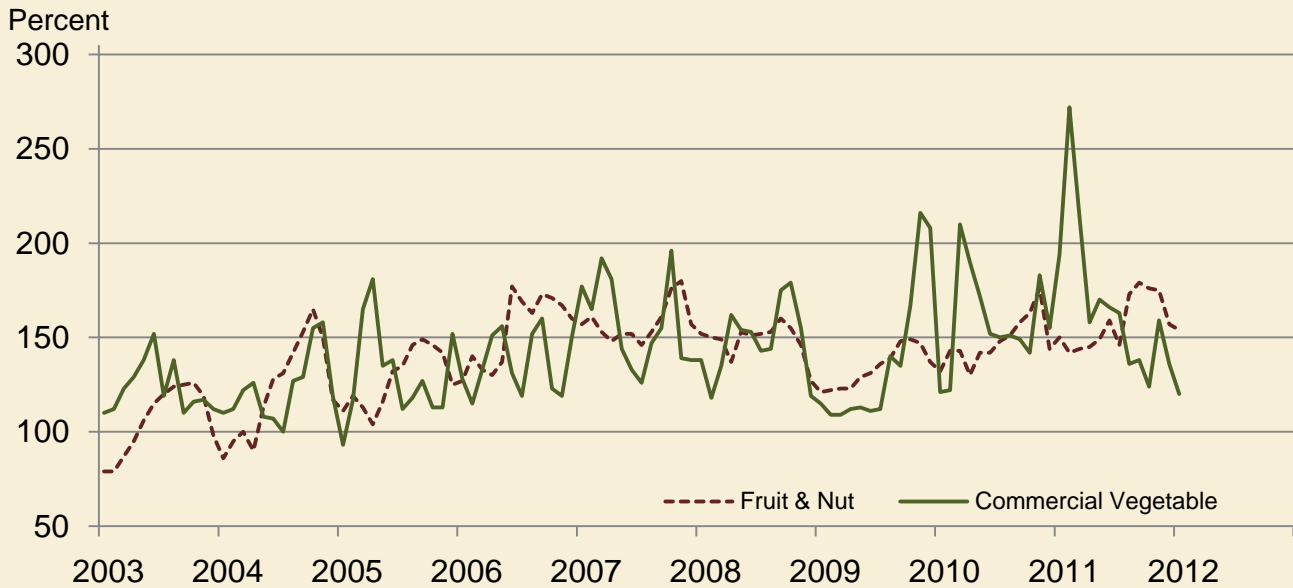
### Received Indexes by Month, Livestock Products, All Products, and All Crops – United States: 1990-1992=100



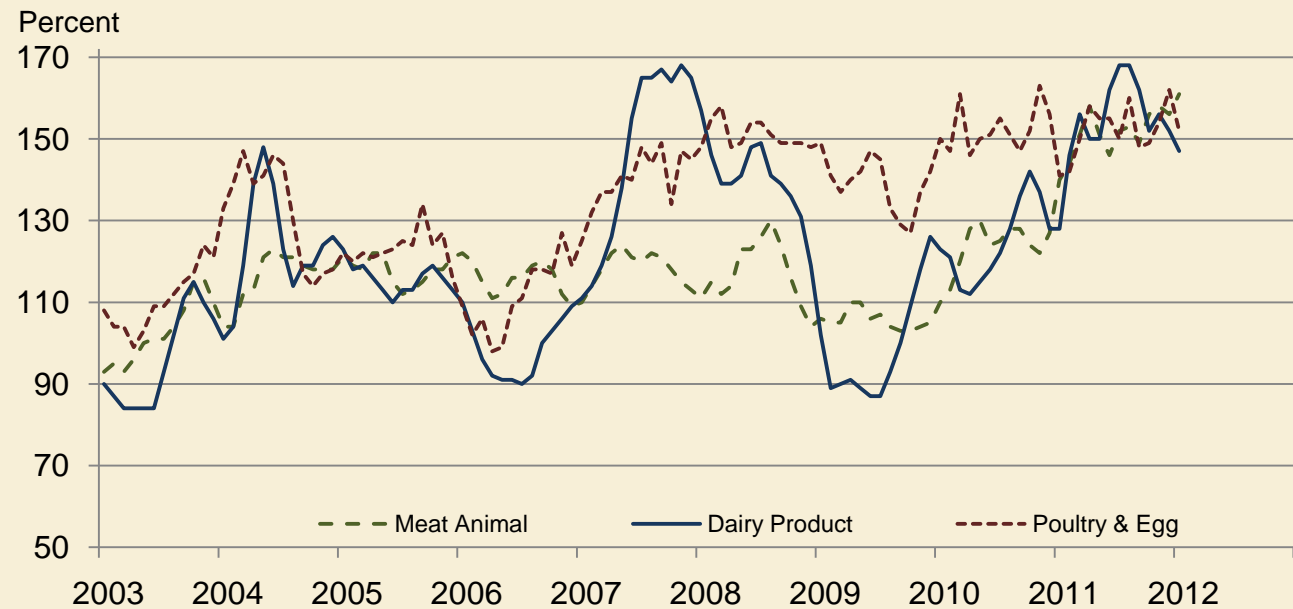
### Received Indexes by Month, Food Grains, Feed Grains & Hay, and Oilseeds – United States: 1990-1992=100



### Received Indexes by Month, Fruit & Nut and Commercial Vegetables – United States: 1990-1992=100



### Received Indexes by Month, Meat Animal, Dairy Product, and Poultry & Egg – United States: 1990-1992=100



**Prices Received for Field Crops and Fruits – United States: January 2012 with Comparisons**

Commodity	Average 1990-1992=100	January 2011	December 2011	Preliminary January 2012
<b>Field crops</b>				
Austrian winter peas .....	dollars/cwt (NA)	(S)	(D)	(S)
Barley, all .....	dollars/bushel 2.12	3.86	5.44	5.44
Feed .....	dollars/bushel 1.90	3.46	4.89	4.29
Malting .....	dollars/bushel 2.43	3.97	5.54	5.60
Beans, dry edible .....	dollars/cwt 19.10	26.20	41.80	45.80
Canola .....	dollars/cwt (NA)	20.30	23.00	23.40
Chickpeas, all .....	dollars/cwt (NA)	31.00	38.40	45.70
Large .....	dollars/cwt (NA)	32.30	39.10	45.80
Small .....	dollars/cwt (NA)	22.40	31.40	(D)
Corn .....	dollars/bushel 2.30	4.94	5.86	5.90
Cotton, Upland .....	dollars/pound 0.606	0.821	0.885	0.874
Cottonseed <sup>1</sup> .....	dollars/ton 96.00	165.00	264.00	281.00
Flaxseed .....	dollars/bushel 4.27	13.80	13.60	13.60
Hay, all, baled .....	dollars/ton 76.30	112.00	177.00	172.00
Alfalfa .....	dollars/ton 77.20	121.00	199.00	192.00
Other .....	dollars/ton 60.00	97.30	126.00	127.00
Lentils .....	dollars/cwt (NA)	28.40	25.00	23.40
Oats .....	dollars/bushel 1.22	3.13	3.57	3.62
Peanuts, in-shell .....	dollars/pound 0.304	0.230	0.308	0.343
Peas, dry edible .....	dollars/cwt (NA)	10.50	15.90	15.90
Potatoes .....	dollars/cwt 5.82	9.08	9.08	9.08
Rice, all .....	dollars/cwt 7.07	14.00	14.20	14.50
Long .....	dollars/cwt (NA)	11.80	13.80	14.00
Medium and short .....	dollars/cwt (NA)	19.60	15.20	15.30
Sorghum grain .....	dollars/cwt 3.75	9.49	10.50	10.40
Soybeans .....	dollars/bushel 5.61	11.60	11.50	11.70
Sunflowers, all .....	dollars/cwt 9.50	21.90	29.60	29.60
Wheat, all .....	dollars/bushel 2.96	6.69	7.19	6.86
Winter .....	dollars/bushel 2.93	6.35	6.41	6.25
Durum .....	dollars/bushel 2.86	7.09	10.00	8.87
Other spring .....	dollars/bushel 3.11	7.14	8.26	7.86
Hard red winter <sup>2</sup> .....	dollars/bushel (NA)	6.50	6.54	(NA)
Soft red winter <sup>2</sup> .....	dollars/bushel (NA)	6.31	6.58	(NA)
Hard red spring <sup>2</sup> .....	dollars/bushel (NA)	7.22	8.44	(NA)
White <sup>2</sup> .....	dollars/bushel 3.24	6.05	6.12	(NA)
<b>Fruits</b>				
Citrus, equivalent on-tree				
Grapefruit .....	dollars/box 5.77	6.94	6.21	5.78
Lemons .....	dollars/box 10.10	8.84	14.02	14.37
Oranges .....	dollars/box 5.79	6.58	7.02	7.09
Tangelos .....	dollars/box 5.82	5.70	6.56	7.07
Tangerines and mandarins .....	dollars/box 15.11	16.93	21.15	15.73
Noncitrus, fresh				
Apples <sup>3</sup> .....	dollars/pound 0.212	0.300	0.367	0.354
Grapes <sup>3</sup> .....	dollars/ton 506.00	(S)	1,080.00	680.00
Peaches <sup>3</sup> .....	dollars/ton 432.00	(S)	(S)	(S)
Pears <sup>3</sup> .....	dollars/ton 370.00	639.00	521.00	510.00
Strawberries .....	dollars/cwt 56.00	217.00	153.00	152.00

(D) Withheld to avoid disclosing data for individual operations.

(NA) Not available.

(S) Insufficient number of reports to establish an estimate.

<sup>1</sup> Marketing year August - February.

<sup>2</sup> Preliminary estimates not set for this item.

<sup>3</sup> Equivalent packinghouse-door returns for California, Michigan, New York (apples only), and Washington (apples, peaches, and pears). Prices as sold for other states.

# Prices Received for Vegetables and Livestock – United States: January 2012 with Comparisons

[Price data source for livestock and poultry commodities is United States Department of Agriculture's Agricultural Marketing Service]

Commodity	Average 1990-1992=100	January 2011	December 2011	Preliminary January 2012
<b>Vegetables, fresh <sup>1</sup></b>				
Asparagus .....dollars/cwt	79.80	(S)	(S)	(S)
Beans, snap <sup>2</sup> .....dollars/cwt	(NA)	131.00	69.10	80.60
Broccoli .....dollars/cwt	22.50	57.10	51.60	28.40
Cantaloupes <sup>2</sup> .....dollars/cwt	(NA)	(S)	11.90	(S)
Carrots .....dollars/cwt	13.20	38.00	25.50	26.30
Cauliflower .....dollars/cwt	26.80	41.10	66.20	38.80
Celery .....dollars/cwt	11.60	25.10	14.90	17.20
Corn, sweet .....dollars/cwt	15.70	62.20	14.90	31.50
Cucumbers <sup>2</sup> .....dollars/cwt	(NA)	(S)	19.40	(S)
Lettuce .....dollars/cwt	11.90	27.20	17.40	12.90
Onions <sup>3</sup> .....dollars/cwt	12.80	12.40	9.48	8.93
Tomatoes .....dollars/cwt	32.30	51.90	26.50	31.70
<b>Livestock</b>				
Calves .....dollars/cwt	94.30	136.00	157.00	166.00
Cattle, all beef .....dollars/cwt	72.90	107.00	120.00	124.00
Cows <sup>4</sup> .....dollars/cwt	49.60	65.00	70.50	73.80
Steers & heifers .....dollars/cwt	77.10	110.00	126.00	129.00
Milk cows <sup>5</sup> .....dollars/head	1130.00	1300.00	(NA)	1460.00
Hogs, all .....dollars/cwt	47.70	55.80	63.50	62.40
Barrows & gilts .....dollars/cwt	48.40	56.70	63.70	62.60
Sows .....dollars/cwt	39.50	47.80	55.90	55.00
<b>Dairy and poultry</b>				
Milk, all <sup>6</sup> .....dollars/cwt	13.06	16.70	19.80	19.20
Fat test ..... percent	3.66	3.83	3.83	3.80
Broilers, live <sup>7</sup> .....dollars/pound	0.317	0.450	0.470	0.490
Eggs, all <sup>8</sup> .....dollars/dozen	0.643	0.850	1.220	0.850
Market <sup>8 9</sup> .....dollars/dozen	0.546	0.660	1.100	0.667
Turkeys, live <sup>8 10 11</sup> .....dollars/pound	0.380	0.564	0.714	0.660
<b>Adjusted for seasonal variation</b>				
Eggs, all .....dollars/dozen	0.545	0.758	0.967	0.767
Seasonal factor ..... percent	100	112	126	111
Milk, all <sup>6</sup> .....dollars/cwt	9.71	16.60	18.60	19.00
Seasonal factor ..... percent	100	101	106	101

(NA) Not available.

(S) Insufficient number of reports to establish an estimate.

<sup>1</sup> Beginning January 2006, point of first sale. FOB shipping point for prior years.

<sup>2</sup> Monthly estimates began January 1995.

<sup>3</sup> Includes some processing.

<sup>4</sup> Beef cows and cull dairy cows sold for slaughter.

<sup>5</sup> Animals sold for dairy herd replacement only. Prices available for January, April, July, and October.

<sup>6</sup> Before deductions for hauling. Includes quality, quantity, and other premiums. Excludes hauling subsidies.

<sup>7</sup> Live weight equivalent price.

<sup>8</sup> Mid-month price.

<sup>9</sup> Also referred to as table eggs.

<sup>10</sup> Live weight equivalent price is used when actual live weight price is not available.

<sup>11</sup> Beginning January 2011, price reflects FOB shipping point basis. Prior year price reflects delivered basis.

## Prices Received for Corn by Month – United States

Dollars per bushel



## Prices Received for Wheat by Month – United States

Dollars per bushel



## Prices Received for Upland Cotton by Month – United States

Dollars per pound



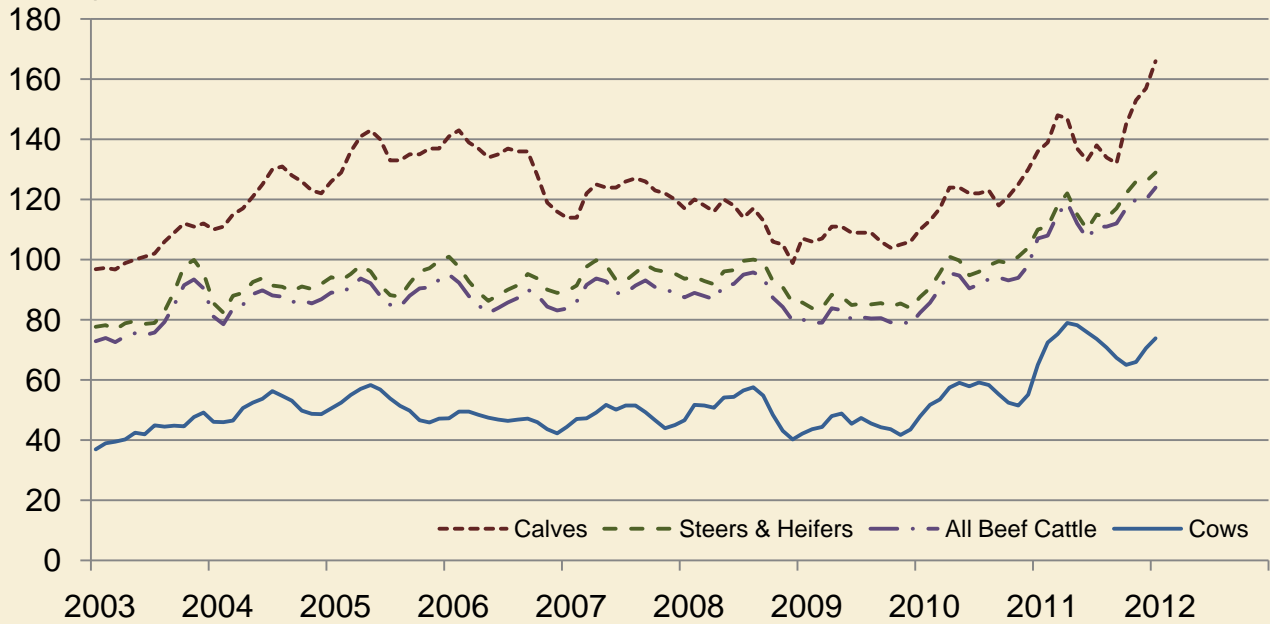
## Prices Received for Soybeans by Month – United States

Dollars per bushel



## Prices Received for Cattle by Month – United States

Dollars per cwt



## Prices Received for Milk by Month – United States

Dollars per cwt



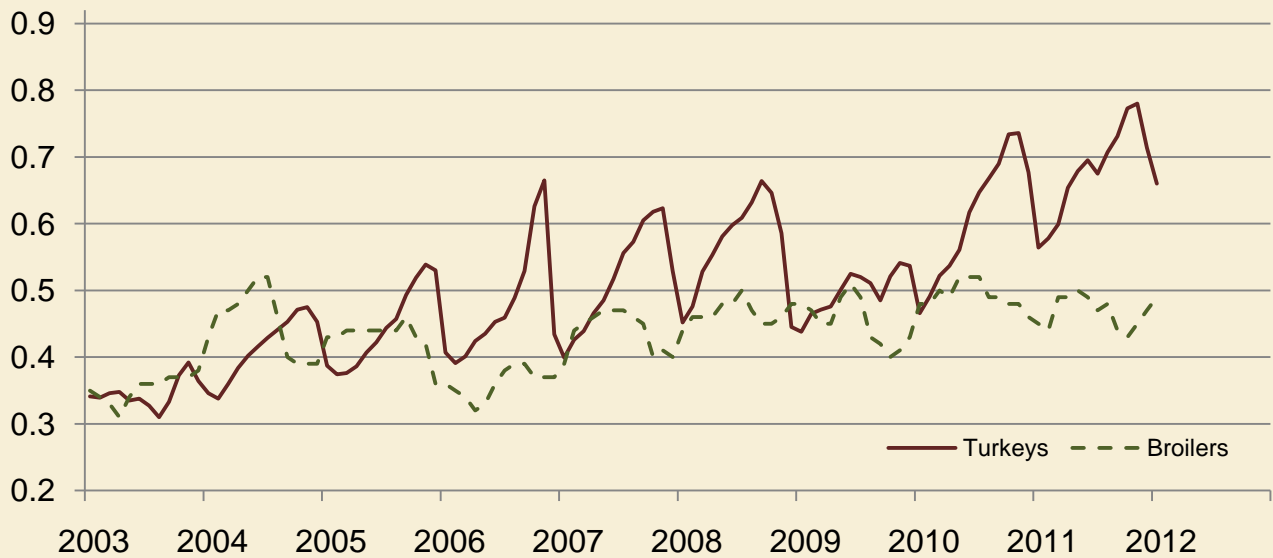
## Prices Received for Hogs by Month – United States

Dollars per cwt



## Prices Received for Poultry by Month – United States

Dollars per pound



## Prices Received for All Wheat, Corn, and Soybeans by Month – United States: 2012 with Comparisons

[Current month prices are mid-month; prices for previous months and years are for the entire month. Blank data cells indicate estimation period has not yet begun]

Month	All wheat			Corn			Soybeans		
	2010	2011	Preliminary 2012	2010	2011	Preliminary 2012	2010	2011	Preliminary 2012
	(dollars per bushel)	(dollars per bushel)	(dollars per bushel)	(dollars per bushel)	(dollars per bushel)	(dollars per bushel)	(dollars per bushel)	(dollars per bushel)	(dollars per bushel)
January .....	4.90	6.69	6.86	3.66	4.94	5.90	9.79	11.60	11.70
February .....	4.73	7.42		3.55	5.65		9.41	12.70	
March .....	4.70	7.55		3.55	5.53		9.39	12.70	
April .....	4.41	8.01		3.41	6.36		9.47	13.10	
May .....	4.34	8.16		3.48	6.32		9.41	13.20	
June .....	4.16	7.41		3.41	6.38		9.45	13.20	
July .....	4.49	7.10		3.49	6.33		9.79	13.20	
August .....	5.44	7.61		3.65	6.88		10.10	13.40	
September ...	5.79	7.55		4.08	6.37		9.98	12.20	
October .....	5.88	7.29		4.32	5.71		10.20	11.70	
November ....	6.10	7.26		4.55	5.84		11.10	11.70	
December ....	6.44	7.19		4.82	5.86		11.60	11.50	

## Prices Received for Beef Cattle and All Hogs by Month – United States: 2012 with Comparisons

[Current month prices are mid-month; prices for previous months and years are for the entire month. Blank data cells indicate estimation period has not yet begun]

Month	Beef cattle <sup>1</sup>			All hogs <sup>2</sup>		
	2010	2011	Preliminary 2012	2010	2011	Preliminary 2012
	(dollars per cwt)	(dollars per cwt)	(dollars per cwt)	(dollars per cwt)	(dollars per cwt)	(dollars per cwt)
January .....	82.30	107.00	124.00	48.40	55.80	62.40
February .....	85.70	108.00		48.90	61.60	
March .....	90.40	115.00		52.10	63.10	
April .....	95.60	119.00		56.50	67.70	
May .....	94.70	112.00		62.20	68.60	
June .....	90.40	107.00		58.20	69.70	
July .....	91.70	111.00		58.50	71.70	
August .....	93.50	111.00		61.30	75.80	
September .....	94.10	112.00		61.00	67.10	
October .....	93.10	117.00		53.30	68.70	
November .....	94.00	120.00		47.80	64.40	
December .....	98.10	120.00		52.30	63.50	

<sup>1</sup> Cows and steers & heifers.

<sup>2</sup> Barrows & gilts and sows.

## Prices Received for All Wheat – States and United States: January 2012 with Comparisons

State	January 2011	December 2011	Preliminary January 2012
	(dollars per bushel)	(dollars per bushel)	(dollars per bushel)
Arizona .....	(D)	(S)	(S)
Arkansas .....	7.31	(D)	6.17
California .....	5.30	(D)	(D)
Colorado .....	6.33	6.34	6.25
Idaho .....	5.96	6.62	6.68
Illinois .....	6.42	6.18	6.20
Indiana .....	6.83	6.72	6.00
Kansas .....	7.25	6.54	6.45
Michigan .....	6.28	6.07	6.00
Minnesota .....	6.74	8.31	7.98
Missouri .....	6.02	6.34	6.20
Montana .....	6.23	7.79	7.55
Nebraska .....	6.27	6.20	6.20
North Carolina .....	6.95	7.59	6.89
North Dakota .....	7.23	8.40	7.93
Ohio .....	6.15	6.35	6.30
Oklahoma .....	6.64	6.81	6.55
Oregon .....	6.29	6.66	6.21
South Dakota .....	7.41	7.85	7.30
Texas .....	7.15	6.12	6.42
Washington .....	6.33	6.36	6.15
United States .....	6.69	7.19	6.86

(D) Withheld to avoid disclosing data for individual operations.

(S) Insufficient number of reports to establish an estimate.

## Prices Received for Winter Wheat – States and United States: January 2012 with Comparisons

State	January 2011	December 2011	Preliminary January 2012
	(dollars per bushel)	(dollars per bushel)	(dollars per bushel)
Arkansas .....	7.31	(D)	6.17
California .....	5.30	(D)	(D)
Colorado .....	6.32	6.40	6.25
Idaho .....	5.78	6.27	6.30
Illinois .....	6.42	6.18	6.20
Indiana .....	6.83	6.72	6.00
Kansas .....	7.25	6.54	6.45
Michigan .....	6.28	6.07	6.00
Minnesota .....	5.10	(D)	(S)
Missouri .....	6.02	6.34	6.20
Montana .....	5.82	6.64	6.58
Nebraska .....	6.27	6.20	6.20
North Carolina .....	6.95	7.59	6.89
North Dakota .....	5.61	6.68	6.25
Ohio .....	6.15	6.35	6.30
Oklahoma .....	6.64	6.81	6.55
Oregon .....	6.20	6.48	6.00
South Dakota .....	6.31	6.83	6.40
Texas .....	7.15	6.12	6.42
Washington .....	6.18	6.08	5.92
United States .....	6.35	6.41	6.25

(D) Withheld to avoid disclosing data for individual operations.

(S) Insufficient number of reports to establish an estimate.

**Prices Received for Durum Wheat – States and United States: January 2012 with Comparisons**

State	January 2011	December 2011	Preliminary January 2012
	(dollars per bushel)	(dollars per bushel)	(dollars per bushel)
Arizona .....	(D)	(S)	(S)
California .....	(S)	(S)	(S)
Idaho .....	(D)	(D)	(D)
Montana .....	6.54	11.40	10.00
North Dakota .....	7.25	8.94	8.40
United States .....	7.09	10.00	8.87

(D) Withheld to avoid disclosing data for individual operations.

(S) Insufficient number of reports to establish an estimate.

**Prices Received for Spring Wheat – States and United States: January 2012 with Comparisons**

State	January 2011	December 2011	Preliminary January 2012
	(dollars per bushel)	(dollars per bushel)	(dollars per bushel)
Colorado .....	(D)	5.64	(S)
Idaho .....	6.35	7.27	7.20
Minnesota .....	6.80	8.31	8.00
Montana .....	6.77	8.47	8.21
North Dakota .....	7.28	8.44	7.95
Oregon .....	6.97	7.72	7.30
South Dakota .....	8.03	8.52	7.90
Washington .....	7.03	7.62	7.29
United States .....	7.14	8.26	7.86

(D) Withheld to avoid disclosing data for individual operations.

(S) Insufficient number of reports to establish an estimate.

### Prices Received for All Barley – States and United States: January 2012 with Comparisons

State	January 2011	December 2011	Preliminary January 2012
	(dollars per bushel)	(dollars per bushel)	(dollars per bushel)
California .....	(S)	(S)	(S)
Colorado .....	(D)	4.78	(D)
Idaho .....	4.00	5.80	5.81
Minnesota .....	3.83	(D)	(D)
Montana .....	3.91	5.32	5.08
North Dakota .....	3.61	5.56	5.53
Oregon .....	3.95	4.28	4.30
Utah .....	4.38	5.53	(D)
Washington .....	3.87	4.26	3.98
Wyoming .....	(D)	(D)	(D)
United States .....	3.86	5.44	5.44

(D) Withheld to avoid disclosing data for individual operations.

(S) Insufficient number of reports to establish an estimate.

### Prices Received for Malting Barley – States: January 2012 with Comparisons

State	January 2011	December 2011	Preliminary January 2012
	(dollars per bushel)	(dollars per bushel)	(dollars per bushel)
Idaho .....	4.00	5.85	5.85
Minnesota .....	(D)	(D)	(D)
Montana .....	3.94	5.36	(D)
North Dakota .....	3.89	5.60	5.60
Wyoming .....	(D)	(D)	(D)

(D) Withheld to avoid disclosing data for individual operations.

### Prices Received for Feed Barley – States: January 2012 with Comparisons

State	January 2011	December 2011	Preliminary January 2012
	(dollars per bushel)	(dollars per bushel)	(dollars per bushel)
Idaho .....	3.95	4.43	4.50
Minnesota .....	3.18	4.08	(D)
Montana .....	3.67	4.94	(D)
North Dakota .....	3.19	5.36	5.10
Wyoming .....	(S)	(S)	(S)

(D) Withheld to avoid disclosing data for individual operations.

(S) Insufficient number of reports to establish an estimate.

## Prices Received for Corn – States and United States: January 2012 with Comparisons

State	January 2011	December 2011	Preliminary January 2012
	(dollars per bushel)	(dollars per bushel)	(dollars per bushel)
Colorado .....	4.77	6.09	6.00
Illinois .....	4.94	5.92	6.00
Indiana .....	4.95	6.02	5.90
Iowa .....	5.07	5.78	5.80
Kansas .....	5.34	6.07	6.05
Kentucky .....	4.81	6.24	6.20
Michigan .....	5.25	5.63	5.65
Minnesota .....	4.76	5.52	5.70
Missouri .....	4.99	6.14	6.10
Nebraska .....	4.81	5.80	5.90
North Carolina .....	6.10	6.48	6.66
North Dakota .....	4.35	5.40	5.60
Ohio .....	5.23	6.04	5.95
Pennsylvania .....	6.34	6.63	6.75
South Dakota .....	4.49	5.65	5.65
Tennessee .....	5.09	6.30	6.15
Texas .....	4.91	6.52	6.67
Wisconsin .....	4.90	5.73	5.78
United States .....	4.94	5.86	5.90

## Prices Received for Soybeans – States and United States: January 2012 with Comparisons

State	January 2011	December 2011	Preliminary January 2012
	(dollars per bushel)	(dollars per bushel)	(dollars per bushel)
Arkansas .....	11.20	11.80	12.00
Illinois .....	11.70	11.80	12.10
Indiana .....	11.70	11.90	11.90
Iowa .....	11.80	11.30	11.30
Kansas .....	12.60	11.00	11.00
Kentucky .....	11.50	11.70	11.90
Louisiana .....	10.90	11.70	12.00
Michigan .....	11.80	11.20	11.30
Minnesota .....	11.20	11.20	11.50
Mississippi .....	11.70	12.00	11.90
Missouri .....	11.60	11.80	11.90
Nebraska .....	11.40	11.20	11.50
North Carolina .....	12.10	11.30	11.60
North Dakota .....	10.90	11.20	11.10
Ohio .....	11.90	11.80	12.00
South Dakota .....	11.30	11.10	11.10
Tennessee .....	11.10	12.00	12.20
Wisconsin .....	11.50	11.40	11.60
United States .....	11.60	11.50	11.70

### Prices Received for Oats – States and United States: January 2012 with Comparisons

State	January 2011	December 2011	Preliminary January 2012
	(dollars per bushel)	(dollars per bushel)	(dollars per bushel)
Illinois .....	(S)	(S)	(S)
Iowa .....	3.76	4.23	3.65
Michigan .....	3.74	(D)	(D)
Minnesota .....	2.87	3.44	3.50
Montana .....	2.62	(D)	(S)
Nebraska .....	3.01	3.80	3.90
New York .....	(D)	(D)	(D)
North Dakota .....	(D)	2.95	(D)
Oregon .....	(D)	(S)	(S)
Pennsylvania .....	4.31	4.30	4.10
South Dakota .....	3.25	3.48	3.55
Texas .....	(S)	(S)	(S)
Wisconsin .....	2.69	3.90	3.80
United States .....	3.13	3.57	3.62

(D) Withheld to avoid disclosing data for individual operations.

(S) Insufficient number of reports to establish an estimate.

### Prices Received for Sorghum Grain – States and United States: January 2012 with Comparisons

State	January 2011	December 2011	Preliminary January 2012
	(dollars per cwt)	(dollars per cwt)	(dollars per cwt)
Arkansas .....	(D)	(D)	10.50
Illinois .....	10.70	(D)	(D)
Kansas .....	9.61	10.50	10.20
Louisiana .....	(D)	(D)	(S)
Missouri .....	9.00	10.80	10.70
Nebraska .....	8.99	9.74	10.20
Oklahoma .....	9.52	10.60	10.70
Texas .....	9.16	11.80	11.20
United States .....	9.49	10.50	10.40

(D) Withheld to avoid disclosing data for individual operations.

(S) Insufficient number of reports to establish an estimate.

**Prices Received for Dry Beans – States and United States: January 2012 with Comparisons**

State	January 2011	December 2011	Preliminary January 2012
	(dollars per cwt)	(dollars per cwt)	(dollars per cwt)
California .....	50.60	51.20	57.30
Colorado .....	24.90	44.10	44.00
Idaho .....	29.30	42.30	41.90
Michigan .....	32.00	49.50	52.70
Minnesota .....	28.00	41.80	45.00
Nebraska .....	25.30	43.00	43.40
North Dakota .....	23.10	39.30	44.90
United States .....	26.20	41.80	45.80

**Prices Received for Peanuts (In-Shell) – States and United States: January 2012 with Comparisons**

State	January 2011	December 2011	Preliminary January 2012
	(dollars per pound)	(dollars per pound)	(dollars per pound)
Alabama .....	0.209	0.281	0.333
Florida .....	0.230	0.264	0.294
Georgia .....	0.214	0.302	0.303
Mississippi .....	(S)	0.237	0.298
New Mexico .....	0.293	(S)	(D)
North Carolina .....	0.219	0.367	0.307
Oklahoma .....	(D)	0.324	(D)
South Carolina .....	0.241	0.314	0.305
Texas .....	0.255	0.436	0.460
Virginia .....	0.213	0.303	0.296
United States .....	0.230	0.308	0.343

(D) Withheld to avoid disclosing data for individual operations.

(S) Insufficient number of reports to establish an estimate.

### Prices Received for Sunflower – States and United States: January 2012 with Comparisons

State	January 2011	December 2011	Preliminary January 2012
	(dollars per cwt)	(dollars per cwt)	(dollars per cwt)
Colorado .....	(D)	31.20	(D)
Kansas .....	21.40	28.50	27.90
Minnesota .....	20.90	30.80	(D)
North Dakota .....	22.80	31.10	30.20
South Dakota .....	19.20	28.10	28.60
United States .....	21.90	29.60	29.60

(D) Withheld to avoid disclosing data for individual operations.

### Prices Received for Canola – States and United States: January 2012 with Comparisons

State	January 2011	December 2011	Preliminary January 2012
	(dollars per cwt)	(dollars per cwt)	(dollars per cwt)
Minnesota .....	20.20	24.30	(S)
North Dakota .....	20.30	22.90	23.40
United States .....	20.30	23.00	23.40

(S) Insufficient number of reports to establish an estimate.

### Prices Received for Flaxseed – States and United States: January 2012 with Comparisons

State	January 2011	December 2011	Preliminary January 2012
	(dollars per bushel)	(dollars per bushel)	(dollars per bushel)
North Dakota .....	13.80	13.60	13.60
United States .....	13.80	13.60	13.60

## Prices Received for Upland Cotton and Cottonseed – States and United States: January 2012 with Comparisons

[Cottonseed marketing year August - February]

State	Cotton, Upland			Cottonseed		
	January 2011	December 2011	Preliminary January 2012	January 2011	December 2011	Preliminary January 2012
	(dollars per pound)	(dollars per pound)	(dollars per pound)	(dollars per ton)	(dollars per ton)	(dollars per ton)
Alabama .....	0.969	0.855	0.880	146.00	208.00	201.00
Arizona .....	(D)	0.954	(D)	227.00	309.00	307.00
Arkansas .....	0.770	0.939	0.906	(S)	239.00	(S)
California .....	1.160	1.060	(D)	(D)	350.00	340.00
Georgia .....	1.060	0.945	0.948	140.00	206.00	205.00
Louisiana .....	0.764	0.886	0.935	(S)	(S)	(S)
Mississippi .....	0.820	0.948	0.959	(S)	263.00	(S)
North Carolina .....	1.050	0.889	0.902	(S)	188.00	189.00
Tennessee .....	0.784	0.913	(D)	(S)	270.00	(S)
Texas .....	0.775	0.830	0.827	158.00	325.00	315.00
United States .....	0.821	0.885	0.874	165.00	264.00	281.00

(D) Withheld to avoid disclosing data for individual operations.

(S) Insufficient number of reports to establish an estimate.

## Prices Received and Farm Marketings for Upland Cotton and Rice – United States: January 2012 with Comparisons

Item	January 2011	December 2011	Preliminary January 2012
Cotton, Upland			
Average price ..... dollars/pound	0.821	0.885	0.874
Marketings <sup>1</sup> ..... 1,000 bales	2,794	1,965	(NA)
Rice, all			
Average price ..... dollars/cwt	14.00	14.20	14.50
Marketings <sup>2</sup> ..... 1,000 cwt	21,806	14,177	(NA)
Rice, long			
Average price ..... dollars/cwt	11.80	13.80	14.00
Marketings <sup>2</sup> ..... 1,000 cwt	15,722	9,938	(NA)
Rice, medium and short			
Average price ..... dollars/cwt	19.60	15.20	15.30
Marketings <sup>2</sup> ..... 1,000 cwt	6,084	4,239	(NA)

(NA) Not available.

<sup>1</sup> Marketings based on a survey of cotton buyers in the major producing States - Alabama, Arizona, Arkansas, California, Georgia, Louisiana, Mississippi, North Carolina, Tennessee, and Texas.

<sup>2</sup> Purchases by private firms and rice (rough equivalent) shipped by cooperatives.

## Prices Received for Hay by Type – States and United States: January 2012 with Comparisons

State	All hay			Alfalfa hay			Other hay		
	January 2011	December 2011	Preliminary January 2012	January 2011	December 2011	Preliminary January 2012	January 2011	December 2011	Preliminary January 2012
	(dollars per ton)	(dollars per ton)	(dollars per ton)	(dollars per ton)	(dollars per ton)	(dollars per ton)	(dollars per ton)	(dollars per ton)	(dollars per ton)
Arizona .....	139.00	248.00	247.00	140.00	250.00	250.00	125.00	200.00	180.00
California .....	148.00	226.00	236.00	161.00	237.00	243.00	103.00	177.00	203.00
Colorado .....	128.00	222.00	231.00	130.00	230.00	240.00	105.00	160.00	165.00
Idaho .....	133.00	226.00	218.00	135.00	228.00	220.00	106.00	150.00	140.00
Illinois .....	130.00	165.00	159.00	145.00	180.00	170.00	87.00	150.00	140.00
Iowa .....	105.00	135.00	144.00	117.00	142.00	152.00	80.00	93.00	98.00
Kansas .....	103.00	188.00	191.00	115.00	215.00	220.00	75.00	105.00	105.00
Kentucky .....	91.00	113.00	113.00	140.00	190.00	190.00	75.00	90.00	90.00
Michigan .....	102.00	103.00	103.00	110.00	110.00	110.00	80.00	90.00	85.00
Minnesota .....	93.00	122.00	135.00	100.00	140.00	140.00	75.00	80.00	90.00
Missouri .....	80.00	103.00	100.00	140.00	250.00	250.00	65.00	75.00	75.00
Montana .....	77.00	98.00	105.00	77.00	98.00	107.00	77.00	96.00	92.00
Nebraska .....	76.00	121.00	128.00	79.00	131.00	137.00	63.00	94.00	93.00
Nevada .....	143.00	227.00	231.00	145.00	230.00	235.00	115.00	160.00	150.00
New Mexico .....	165.00	298.00	298.00	170.00	305.00	305.00	139.00	227.00	227.00
New York .....	107.00	96.00	107.00	130.00	105.00	129.00	105.00	95.00	105.00
North Dakota .....	64.00	74.00	69.00	67.00	80.00	75.00	48.00	54.00	55.00
Ohio .....	114.00	112.00	142.00	156.00	183.00	187.00	79.00	85.00	102.00
Oklahoma .....	87.00	187.00	189.00	137.00	236.00	236.00	80.00	126.00	129.00
Oregon .....	151.00	216.00	218.00	144.00	250.00	239.00	160.00	175.00	195.00
Pennsylvania .....	118.00	156.00	157.00	153.00	194.00	183.00	110.00	130.00	139.00
South Dakota .....	82.00	136.00	122.00	87.00	147.00	133.00	69.00	97.00	87.00
Texas .....	119.00	181.00	164.00	190.00	270.00	265.00	112.00	169.00	153.00
Utah .....	109.00	198.00	187.00	109.00	200.00	191.00	99.00	160.00	153.00
Washington .....	144.00	226.00	229.00	130.00	240.00	245.00	170.00	200.00	200.00
Wisconsin .....	92.00	116.00	113.00	95.00	130.00	125.00	70.00	90.00	90.00
Wyoming .....	90.00	139.00	149.00	90.00	145.00	155.00	88.00	125.00	130.00
United States .....	112.00	177.00	172.00	121.00	199.00	192.00	97.30	126.00	127.00

## Prices Received for Apples – States and United States: January 2012 with Comparisons

[Equivalent packinghouse-door returns for California, Michigan, New York, and Washington. Prices at point of first sale for other States]

State	Apples, fresh use		
	January 2011	December 2011	Preliminary January 2012
	(dollars per pound)	(dollars per pound)	(dollars per pound)
California .....	(NA)	(NA)	(NA)
Michigan .....	0.295	0.345	0.320
New York .....	0.239	0.357	0.317
Ohio .....	0.360	0.460	0.430
Pennsylvania .....	(NA)	0.318	(NA)
Virginia .....	0.230	0.360	0.360
Washington .....	0.314	0.375	0.375
United States .....	0.300	0.367	0.354

(NA) Not available.

## Prices Received for Citrus Fruits by Utilization – States and United States: January 2011

[Net pounds per box: grapefruit in California-80, Florida-85, Texas-80; lemons-80; oranges in California-80, Florida-90, Texas-85; tangelos-90; tangerines and mandarins in Arizona and California-80, Florida-95]

Commodity, State, and type	FOB packed fresh	Equivalent returns					
		Packinghouse-door			On-tree		
		All	Fresh	Process	All	Fresh	Process
	(dollars per box)	(dollars per box)	(dollars per box)	(dollars per box)	(dollars per box)	(dollars per box)	(dollars per box)
Grapefruit							
California <sup>1</sup> .....	20.80	14.40	14.40	(S)	12.30	12.30	(S)
Florida .....	22.00	8.83	12.21	6.14	6.32	10.02	3.38
White .....	25.00	7.90	15.10	5.35	5.46	12.95	2.80
Colored .....	21.60	9.08	11.80	6.45	6.55	9.60	3.60
Texas .....	22.50	7.60	12.20	1.60	6.12	10.65	0.20
United States .....	21.80	9.41	12.66	6.14	6.94	10.49	3.38
Lemons							
Arizona .....	(D)	(D)	(D)	(D)	(D)	(D)	(D)
California .....	31.90	15.55	21.00	(D)	9.68	15.13	(D)
United States .....	31.60	14.71	20.67	(D)	8.84	14.80	(D)
Oranges							
California							
Navel and miscellaneous ..	23.40	12.97	14.76	(D)	10.54	12.35	(D)
Florida							
Early and mids .....	21.70	8.20	11.70	8.10	5.69	8.95	5.60
United States .....	23.20	9.08	14.40	7.87	6.58	11.94	5.37
Tangelos							
Florida .....	21.40	8.88	11.00	7.85	5.70	7.85	4.65
Tangerines and mandarins							
California .....	(D)	(D)	(D)	(D)	(D)	(D)	(D)
Florida .....	32.90	14.51	20.65	6.99	11.01	17.15	3.49
United States .....	33.60	19.98	24.21	5.53	16.93	21.30	1.98

(D) Withheld to avoid disclosing data for individual operations.

(S) Insufficient number of reports to establish an estimate.

<sup>1</sup> Some processed sales included in fresh sales.

## Prices Received for Citrus Fruits by Utilization – States and United States: December 2011

[Net pounds per box: grapefruit in California-80, Florida-85, Texas-80; lemons-80; oranges in California-80, Florida-90, Texas-85; tangelos-90; tangerines and mandarins in Arizona and California-80, Florida-95]

Commodity, State, and type	FOB packed fresh	Equivalent returns					
		Packinghouse-door			On-tree		
		All	Fresh	Process	All	Fresh	Process
	(dollars per box)	(dollars per box)	(dollars per box)	(dollars per box)	(dollars per box)	(dollars per box)	(dollars per box)
Grapefruit							
California <sup>1</sup> .....	14.50	7.97	7.97	(D)	5.83	5.83	(D)
Florida .....	18.60	8.11	9.02	7.02	5.63	6.78	4.26
White .....	(D)	(D)	(D)	(D)	(D)	(D)	(D)
Colored .....	18.40	8.10	8.80	7.15	5.61	6.55	4.35
Texas .....	23.70	9.34	13.40	1.60	7.84	11.85	0.20
United States .....	19.70	8.42	10.16	5.82	6.21	8.13	3.37
Lemons							
Arizona .....	(D)	(D)	(D)	(D)	(D)	(D)	(D)
California .....	36.90	20.01	25.78	(D)	14.02	19.79	(D)
United States .....	37.00	20.01	25.84	(D)	14.02	19.85	(D)
Oranges							
California							
Navel and miscellaneous ..	24.20	13.86	15.39	(D)	11.38	12.93	(D)
Florida							
Early and mids .....	23.50	8.84	13.25	8.60	6.23	10.45	6.00
United States .....	24.00	9.61	14.87	8.44	7.02	12.32	5.84
Tangelos							
Florida .....	21.00	9.69	9.90	9.50	6.56	6.75	6.40
Tangerines and mandarins							
Arizona .....	(D)	(D)	(D)	(NA)	(D)	(D)	(NA)
California .....	(D)	(D)	(D)	(D)	(D)	(D)	(D)
Florida .....	25.10	11.68	12.80	9.30	7.85	9.10	5.20
United States .....	40.10	24.37	30.81	4.06	21.15	27.88	-0.09

(D) Withheld to avoid disclosing data for individual operations.

(NA) Not available.

<sup>1</sup> Some processed sales included in fresh sales.

## Prices Received for Citrus Fruits by Utilization – States and United States: January 2012

[Net pounds per box: grapefruit in California-80, Florida-85, Texas-80; lemons-80; oranges in California-80, Florida-90, Texas-85; tangelos-90; tangerines and mandarins in Arizona and California-80, Florida-95]

Commodity, State, and type	FOB packed fresh	Equivalent returns					
		Packinghouse-door			On-tree		
		All	Fresh	Process	All	Fresh	Process
	(dollars per box)	(dollars per box)	(dollars per box)	(dollars per box)	(dollars per box)	(dollars per box)	(dollars per box)
Grapefruit							
California <sup>1</sup> .....	16.30	9.77	9.77	(S)	7.63	7.63	(S)
Florida .....	18.70	8.14	9.13	7.36	5.62	6.89	4.63
White .....	19.80	7.87	10.10	7.10	5.38	7.90	4.50
Colored .....	18.55	8.23	8.95	7.50	5.71	6.70	4.70
Texas .....	22.80	7.48	12.50	1.60	6.00	10.95	0.20
United States .....	19.50	8.07	9.96	6.30	5.78	7.88	3.82
Lemons							
Arizona .....	(D)	(D)	(D)	(D)	(D)	(D)	(D)
California .....	38.40	20.26	27.28	(D)	14.27	21.29	(D)
United States .....	38.50	20.36	27.34	(D)	14.37	21.35	(D)
Oranges							
California							
Navel and miscellaneous ..	22.20	11.61	13.39	(D)	9.13	10.93	(D)
Florida							
Early and mids .....	23.10	9.24	12.85	9.15	6.64	10.05	6.55
United States .....	22.30	9.67	13.33	8.89	7.09	10.83	6.29
Tangelos							
Florida .....	21.10	10.19	10.00	10.30	7.07	6.85	7.20
Tangerines and mandarins							
Arizona .....	(D)	(D)	(D)	(D)	(D)	(D)	(D)
California .....	(D)	(D)	(D)	(D)	(D)	(D)	(D)
Florida .....	35.00	17.96	22.70	9.80	14.12	19.00	5.70
United States .....	33.20	19.05	23.47	6.21	15.73	20.42	2.10

(D) Withheld to avoid disclosing data for individual operations.

(S) Insufficient number of reports to establish an estimate.

<sup>1</sup> Some processed sales included in fresh sales.

## Prices Received for Potatoes – States and United States: January 2012 with Comparisons

State	January 2011	December 2011	Preliminary January 2012
	(dollars per cwt)	(dollars per cwt)	(dollars per cwt)
California			
Spring .....	(S)	(S)	(S)
Fall .....	8.70	8.40	8.50
All <sup>1</sup> .....	8.70	8.40	8.50
Colorado			
Fresh <sup>1</sup> .....	13.50	12.00	(D)
All <sup>1</sup> .....	13.00	10.90	10.80
Florida .....	(S)	(S)	(S)
Idaho			
Fresh <sup>2</sup> .....	8.30	7.40	(D)
Processing .....	6.50	7.60	(D)
All <sup>1</sup> .....	7.25	7.50	7.55
Maine .....	9.90	10.30	10.20
Michigan .....	11.20	11.90	12.30
Minnesota .....	6.80	8.50	(D)
New York .....	13.70	13.20	13.20
North Carolina .....	(S)	(S)	(S)
North Dakota			
Fresh <sup>2</sup> .....	12.00	18.40	(D)
Processing .....	7.60	7.10	(D)
All <sup>1</sup> .....	9.15	10.90	10.20
Oregon .....	9.10	8.55	8.90
Texas .....	(S)	(S)	(S)
Virginia .....	(S)	(S)	(S)
Washington			
Processing .....	6.55	8.10	(D)
All <sup>1</sup> .....	8.15	8.90	8.90
Wisconsin			
Fresh <sup>2</sup> .....	11.80	10.90	(D)
Processing .....	11.10	9.05	(D)
All <sup>1</sup> .....	11.40	10.20	10.60
United States			
Fresh <sup>2</sup> .....	11.21	10.72	(D)
Processing .....	7.68	8.10	(D)
All <sup>1</sup> .....	9.08	9.08	9.08

(D) Withheld to avoid disclosing data for individual operations.

(S) Insufficient number of reports to establish an estimate.

<sup>1</sup> Average price of potatoes sold for all uses, including table stock, processing, seed, and livestock feed.

<sup>2</sup> Fresh market prices only. Includes table stock prices.

## Prices Received for All Milk – States and United States: January 2012 with Comparisons

[Before deduction for hauling. Includes quality, quantity, and other premiums. Excludes hauling subsidies]

State	January 2011		December 2011		Preliminary January 2012	
	Price	Fat test	Price	Fat test	Price	Fat test
	(dollars per cwt)	(percent)	(dollars per cwt)	(percent)	(dollars per cwt)	(percent)
Arizona .....	16.50	3.69	19.10	3.68	18.60	3.67
California .....	15.35	3.83	17.80	3.85	17.30	3.82
Colorado .....	16.70	3.69	19.10	3.69	18.90	3.66
Florida .....	20.90	3.76	23.20	3.69	24.30	3.68
Idaho .....	15.40	3.78	18.30	3.78	17.50	3.76
Illinois .....	17.20	3.86	20.40	3.89	19.50	3.85
Indiana .....	17.90	3.83	20.40	3.76	20.10	3.70
Iowa .....	16.50	3.78	20.40	3.85	19.70	3.80
Kansas .....	17.90	3.89	20.20	3.94	20.10	3.91
Michigan .....	17.40	3.77	20.50	3.75	19.50	3.73
Minnesota .....	16.20	3.84	21.00	3.90	20.40	3.87
Missouri .....	16.40	3.83	20.40	3.85	20.30	3.81
New Mexico .....	16.40	3.78	18.70	3.71	18.50	3.65
New York .....	17.80	3.84	20.70	3.82	20.30	3.80
Ohio .....	18.40	3.93	21.10	3.85	20.90	3.82
Oregon .....	16.90	3.90	21.50	3.89	21.10	3.85
Pennsylvania .....	18.90	3.85	21.40	3.80	20.90	3.80
Texas .....	17.60	3.96	20.00	3.93	19.50	3.91
Utah .....	16.80	3.87	19.00	3.86	18.50	3.84
Vermont .....	18.20	3.87	20.90	3.88	20.70	3.86
Virginia .....	20.10	3.90	22.10	3.85	22.10	3.82
Washington .....	17.00	3.90	19.90	3.89	19.50	3.85
Wisconsin .....	16.20	3.81	20.90	3.83	19.80	3.81
United States .....	16.70	3.83	19.80	3.83	19.20	3.80

## Prices Received for Milk Cows – States and United States: January 2012 with Comparisons

[Animals sold for dairy herd replacement only. Prices estimated in January, April, July, and October]

State	January 2011 (dollars per head)	October 2011 (dollars per head)	January 2012 (dollars per head)
Arizona .....	1,380	1,550	1,500
California .....	1,200	1,400	1,400
Colorado .....	1,330	1,550	1,500
Florida .....	1,360	1,620	1,490
Idaho .....	1,200	1,450	1,450
Illinois .....	1,330	1,460	1,500
Indiana .....	1,350	1,550	1,450
Iowa .....	1,250	1,450	1,400
Kansas .....	1,200	1,400	1,400
Michigan .....	1,450	1,600	1,600
Minnesota .....	1,310	1,440	1,430
Missouri .....	1,130	1,270	1,200
New Mexico .....	1,320	1,480	1,380
New York .....	1,300	1,450	1,450
Ohio .....	1,360	1,510	1,500
Oregon .....	1,290	1,430	1,440
Pennsylvania .....	1,400	1,550	1,500
Texas .....	1,200	1,400	1,400
Utah .....	1,140	1,380	1,340
Vermont .....	1,450	1,650	1,550
Virginia .....	1,360	1,490	1,520
Washington .....	1,300	1,450	1,400
Wisconsin .....	1,430	1,560	1,550
United States .....	1,300	1,480	1,460

## Commodity Parity Prices and Price as Percent of Parity Price – United States: January 2012 with Comparisons

[Parity prices are computed under the provisions of Title III, Subtitle a, Section 301 (a) of the Agricultural Adjustment Act of 1938 as amended by the Agricultural Acts of 1948, 1949, and 1956. See January *Agricultural Prices* for details on adjusted base price and parity price computations. Parity data not available for blank cells. Primary source of data for livestock and milk prices is United States Department of Agriculture's Agricultural Marketing Service]

Commodity and unit	Adjusted base price	Parity price			Price as percent of parity		
		January 2011	December 2011	January 2012	January 2011	December 2011	January 2012
	(dollars)	(dollars)	(dollars)	(dollars)	(percent)	(percent)	(percent)
<b>Basic commodities</b>							
All wheat .....bushel	0.634	15.60	16.60	17.50	43	43	39
Rice .....cwt	1.46	42.00	44.60	40.30	33	32	36
Corn .....bushel	0.414	9.88	10.50	11.40	50	56	52
<b>Cotton</b>							
Upland ..... pound	0.072	1.83	1.94	1.99	45	46	44
American Pima ..... pound	0.141	3.32	3.53	3.89	54	51	42
Peanuts ..... pound	0.026	0.695	0.739	0.718	33	42	48
<b>Designated nonbasic</b>							
All milk, to plants <sup>1</sup> .....cwt	1.80	46.80	49.80	49.70	35	37	38
Honey, extracted <sup>2</sup> ..... pound	0.139	3.45	3.67	3.84	46	44	42
<b>Wool and mohair</b>							
Wool ..... pound	0.104	2.37	2.52	2.87	49	46	58
Mohair ..... pound	0.333	8.34	8.86	9.19	42	39	45
<b>Other nonbasic</b>							
Apples, fresh <sup>3</sup> ..... pound	0.033	0.849	0.903	0.911	35	41	39
Barley .....bushel	0.436	10.90	11.60	12.00	35	47	45
Canola .....cwt	1.820	44.80	47.60	50.20	45	48	47
Cottonseed ..... ton	17.40	396.00	421.00	480.00	42	63	59
Dry edible beans .....cwt	3.01	75.20	79.90	83.10	35	52	55
Flaxseed .....bushel	1.100	26.30	27.90	30.40	52	49	45
Oats .....bushel	0.263	6.44	6.84	7.26	49	52	50
Potatoes .....cwt	0.855	21.50	22.80	23.60	42	40	38
Sorghum grain .....cwt	0.729	17.40	18.50	20.10	55	57	52
Soybeans .....bushel	1.000	24.40	25.90	27.60	48	44	42
Sunflower, all .....cwt	2.06	49.20	52.30	56.90	45	57	52
<b>Citrus (equivalent on-tree)</b>							
Grapefruit .....box	0.690	17.10	18.10	19.00	41	34	30
Lemons .....box	1.37	35.00	37.20	37.80	25	38	38
Oranges .....box	0.698	17.70	18.80	19.30	37	37	37
Tangerines .....box	1.49	36.80	39.10	41.10	46	54	38
<b>Livestock and poultry</b>							
Beef cattle .....cwt	10.10	260.00	276.00	279.00	41	43	44
Calves .....cwt	13.90	363.00	386.00	384.00	37	41	43
Hogs .....cwt	5.53	142.00	151.00	153.00	39	42	41
Eggs <sup>1</sup> .....dozen	0.091	2.34	2.49	2.51	32	39	31
Turkeys, live ..... pound	0.057	1.440	1.530	1.570	39	47	42

<sup>1</sup> Seasonally adjusted price as percentage of parity price.

<sup>2</sup> Wholesale extracted. Adjusted base price derived from state annual averages prices weighted by production. For 1982 through 1985 the national averages are the support prices.

<sup>3</sup> Equivalent packinghouse-door returns for California, New York (apples only), Oregon (except peaches), and Washington. Price at point of first sale for other states.

## Commodity Parity Prices – United States: January 2012 with Comparisons

[Parity prices are computed under the provisions of Title III, Subtitle a, Section 301 (a) of the Agricultural Adjustment Act of 1938 as amended by the Agricultural Acts of 1948, 1949, and 1956. See January *Agricultural Prices* for details on adjusted base price and parity price computations]

Commodity and unit	Adjusted base price	Parity price			
		January 2011	December 2011	January 2012	
	(dollars)	(dollars)	(dollars)	(dollars)	
<b>Field crops and miscellaneous</b>					
Hops .....	pound	0.306	7.90	8.40	8.45
Mustard seed .....	cwt	2.82	68.50	72.80	77.80
Rapeseed .....	cwt	2.23	55.10	58.60	61.50
Rye .....	bushel	0.525	12.70	13.50	14.50
Safflower .....	cwt	2.02	49.90	53.10	55.80
Spearmint oil .....	pound	1.50	37.10	39.40	41.40
Sweet potatoes .....	cwt	2.20	58.40	62.10	60.70
<b>Tobacco</b>					
Flue-cured, 11-14 .....	pound	0.196	5.35	5.69	5.41
Fire-cured, 21-23 .....	pound	0.283	7.54	8.02	7.81
Burley, 31 .....	pound	0.202	5.51	5.86	5.58
Maryland, 32 .....	pound	0.174	4.71	5.01	4.80
Dark air-cured, 35-37 .....	pound	0.256	6.72	7.14	7.07
Pennsylvania seedleaf, 41 .....	pound	0.182	4.92	5.23	5.02
Cigar binder, 51 .....	pound	0.640	17.40	18.50	17.70
<b>Noncitrus fruit</b>					
Apples, processing <sup>1 9</sup> .....	ton	16.10	414.00	440.00	444.00
Apricots					
Fresh <sup>2 9</sup> .....	ton	114.00	2,930.00	3,120.00	3,150.00
Dried (California) <sup>9</sup> .....	ton	262.00	6,740.00	7,170.00	7,230.00
Avocados <sup>2 9</sup> .....	ton	198.00	5,100.00	5,420.00	5,460.00
Cherries					
Sweet <sup>9</sup> .....	ton	210.00	5,410.00	5,750.00	5,800.00
Tart <sup>9</sup> .....	pound	0.034	0.875	0.930	0.938
Cranberry <sup>3 9</sup> .....	barrel	4.89	126.00	134.00	135.00
Dates (California) <sup>2 9</sup> .....	ton	183.00	4,710.00	5,010.00	5,050.00
<b>Grapes</b>					
Raisin variety <sup>9</sup> .....	ton	117.00	3,010.00	3,200.00	3,230.00
Other dried <sup>9</sup> .....	ton	65.40	1,680.00	1,790.00	1,810.00
Kiwifruit <sup>9</sup> .....	ton	94.40	2,430.00	2,580.00	2,610.00
Nectarines, fresh (California) <sup>2 9</sup> .....	ton	55.30	1,420.00	1,510.00	1,530.00
Olives, canning (California) <sup>3 9</sup> .....	ton	87.40	2,250.00	2,390.00	2,410.00

See footnote(s) at end of table.

--continued

## Commodity Parity Prices – United States: January 2012 with Comparisons (continued)

[Parity prices are computed under the provisions of Title III, Subtitle a, Section 301 (a) of the Agricultural Adjustment Act of 1938 as amended by the Agricultural Acts of 1948, 1949, and 1956. See January *Agricultural Prices* for details on adjusted base price and parity price computations]

Commodity and unit	Adjusted base price	Parity price			
		January 2011	December 2011	January 2012	
	(dollars)	(dollars)	(dollars)	(dollars)	
<b>Noncitrus fruit - continued</b>					
Papayas (Hawaii) <sup>9</sup> .....	pound	0.046	1.18	1.26	1.27
<b>Peaches</b>					
Fresh <sup>4 9</sup> .....	ton	83.00	2,140.00	2,270.00	2,290.00
Dried (California) <sup>9</sup> .....	ton	57.30	1,470.00	1,570.00	1,580.00
<b>Processing, excludes dried</b>					
Clingstone (California) <sup>3 9</sup> .....	ton	33.70	867.00	922.00	930.00
<b>Pears</b>					
Fresh <sup>4 9</sup> .....	ton	55.60	1,430.00	1,520.00	1,530.00
Dried (California) <sup>1 9</sup> .....	ton	178.00	4,580.00	4,870.00	4,910.00
<b>Plums (California)</b>					
Fresh, equivalent on-tree <sup>9</sup> .....	ton	60.20	1,550.00	1,650.00	1,660.00
Prunes, dried (California) <sup>1 9</sup> .....	ton	147.00	3,780.00	4,020.00	4,060.00
<b>Prunes and plums</b>					
Fresh, excludes California <sup>5 9</sup> .....	ton	63.80	1,640.00	1,750.00	1,760.00
Processing, excludes dried <sup>1 9</sup> .....	ton	25.70	662.00	703.00	709.00
<b>Tree nuts<sup>6 9</sup></b>					
Almonds .....	pound	0.209	5.38	5.72	5.77
Hazelnuts .....	ton	183.00	4,710.00	5,010.00	5,050.00
Pistachios .....	pound	0.194	4.99	5.31	5.35
Walnuts .....	ton	177.00	4,560.00	4,840.00	4,890.00
<b>Vegetables, fresh<sup>7</sup></b>					
Carrots <sup>8</sup> .....	cwt	2.69	67.20	71.40	74.20
Cauliflower <sup>8</sup> .....	cwt	4.31	110.00	117.00	119.00
Celery <sup>8</sup> .....	cwt	2.01	52.80	56.10	55.50
Honeydew melons .....	cwt	2.09	55.90	59.40	57.70
Lettuce .....	cwt	2.29	60.50	64.30	63.20
Onions <sup>8</sup> .....	cwt	1.49	40.40	43.00	41.10
Tomatoes .....	cwt	4.68	122.00	130.00	129.00

<sup>1</sup> Equivalent returns at processing plant door.

<sup>2</sup> Equivalent returns at packinghouse door.

<sup>3</sup> Equivalent returns for bulk fruit at first delivery point.

<sup>4</sup> Equivalent packinghouse-door returns for California, New York (apples only), Oregon (except peaches), and Washington. Price at point of first sale for other states.

<sup>5</sup> Based on "as sold" prices for fresh fruit in all states.

<sup>6</sup> Prices In-Shell basis except almonds which are shelled basis.

<sup>7</sup> FOB shipping point prices.

<sup>8</sup> Includes some processing.

<sup>9</sup> Non-citrus fruit and tree nut estimates discontinued October 2011. The program was later reinstated with a publication date of March 15, 2012. Parity prices will be published in the July 2012 "Agricultural Prices" report to include these prices.

## Marketing Year for Specified Commodities

**Rice:** August 1 to July 31 for United States; July 1 to June 30 for Louisiana and Texas; August 1 to July 31 for Arkansas and Mississippi; October 1 to September 30 for California; September 1 to August 31 for Missouri.

**Sweet Potatoes:** July - June for United States; July 1 to June 30 for Alabama and California; July 1 to May 31 for Georgia, Louisiana, North Carolina and Texas; August 1 to May 31 for South Carolina, and Virginia; and August 1 to July 31 for New Jersey.

## Sweet Potato Market Year Average Prices Received – States and United States: Marketing Years 2010 and 2011

State	2010 (dollars per cwt)	2011 <sup>1</sup> (dollars per cwt)
Alabama .....	6.56	9.30
Arkansas .....	13.80	15.90
California .....	24.30	22.10
Florida .....	(D)	(D)
Louisiana .....	19.20	17.60
Mississippi .....	20.40	14.80
New Jersey .....	32.60	29.30
North Carolina .....	18.00	17.70
Texas .....	21.80	13.80
United States .....	20.10	18.00

(D) Withheld to avoid disclosing data for individual operations.  
<sup>1</sup> Preliminary.

**All Rice Market Year Average Prices Received by Length of Grain – States and United States: Marketing Years 2009 and 2010**

State	2009	2010
	(dollars per cwt)	(dollars per cwt)
<b>All rice</b>		
Arkansas .....	13.40	11.30
California .....	19.60	21.00
Louisiana .....	13.00	11.90
Mississippi .....	12.90	10.50
Missouri .....	12.90	11.00
Texas .....	12.90	11.90
United States <sup>1</sup> .....	14.40	12.70
<b>Length of grain</b>		
United States		
Long .....	12.90	11.00
Medium and short .....	18.40	18.80

<sup>1</sup> Based on state prices weighted by marketings for August through July.

**Prices Received and Farm Marketings for All Rice – United States: Marketing Years 2009-2010 through 2011-2012**

[Marketing year average (MYA) prices are weighted average prices for the United States marketing year of August through July. Blank data cells indicate estimation period has not yet begun]

Month	Prices received			Farm marketings <sup>1</sup>		
	2009-2010	2010-2011	2011-2012 <sup>2</sup>	2009-2010	2010-2011	2011-2012 <sup>2</sup>
	(dollars per cwt)	(dollars per cwt)	(dollars per cwt)	(1,000 cwt)	(1,000 cwt)	(1,000 cwt)
August .....	14.90	11.70	13.60	10,503	10,691	11,384
September .....	14.80	11.00	14.40	11,061	15,095	12,507
October .....	14.50	11.50	14.50	14,148	17,131	11,454
November .....	14.50	12.60	14.50	13,854	16,929	10,928
December .....	14.90	13.90	14.20	15,902	19,137	14,177
January <sup>3</sup> .....	15.00	14.00		19,351	21,806	
February .....	14.80	13.40		13,991	14,847	
March .....	14.30	13.00		16,292	15,844	
April .....	14.30	13.10		12,525	12,727	
May .....	13.80	12.70		13,145	14,227	
June .....	13.20	12.10		11,019	11,317	
July .....	12.60	12.90		11,952	12,369	
MYA .....	14.40	12.70		163,743	182,120	

<sup>1</sup> Purchases from producers as reported by private firms and rice (rough equivalent) shipped from producers as reported by cooperative mills.

<sup>2</sup> Prices and marketings include late reports and revised data for August 2011 - November 2011. Final monthly prices and marketings and MYA prices will be published in the January 2013 *Agricultural Prices* report.

<sup>3</sup> Second year.

## Prices Received and Farm Marketings for Long Grain Rice – United States: Marketing Years 2009-2010 through 2011-2012

[Marketing year average (MYA) prices are weighted average prices for the United States marketing year of August through July. Blank data cells indicate estimation period has not yet begun]

Month	Prices received			Farm marketings <sup>1</sup>		
	2009-2010	2010-2011	2011-2012 <sup>2</sup>	2009-2010	2010-2011	2011-2012 <sup>2</sup>
	(dollars per cwt)	(dollars per cwt)	(dollars per cwt)	(1,000 cwt)	(1,000 cwt)	(1,000 cwt)
August .....	13.00	10.30	12.40	8,677	8,570	9,343
September ....	13.10	9.98	13.70	9,125	12,764	10,310
October .....	12.80	10.10	14.10	9,396	14,295	8,694
November .....	13.10	10.60	13.90	10,252	12,773	7,196
December .....	13.60	11.30	13.80	11,078	13,085	9,938
January <sup>3</sup> .....	13.60	11.80		13,585	15,722	
February .....	13.50	12.00		9,999	11,726	
March .....	13.10	11.60		12,248	12,537	
April .....	12.80	11.20		9,128	9,562	
May .....	12.60	10.90		10,055	11,211	
June .....	11.90	11.00		8,373	9,573	
July .....	11.30	11.40		9,089	9,866	
MYA .....	12.90	11.00		121,005	141,684	

<sup>1</sup> Purchases from producers as reported by private firms and rice (rough equivalent) shipped from producers as reported by cooperative mills.

<sup>2</sup> Prices and marketings include late reports and revised data for August 2011 - November 2011. Final monthly prices and marketings and MYA prices will be published in the January 2013 *Agricultural Prices* report.

<sup>3</sup> Second year.

## Prices Received and Farm Marketings for Medium and Short Grain Rice – United States: Marketing Years 2009-2010 through 2011-2012

[Marketing year average (MYA) prices are weighted average prices for the United States marketing year of August through July. Blank data cells indicate estimation period has not yet begun]

Month	Prices received			Farm marketings <sup>1</sup>		
	2009-2010	2010-2011	2011-2012 <sup>2</sup>	2009-2010	2010-2011	2011-2012 <sup>2</sup>
	(dollars per cwt)	(dollars per cwt)	(dollars per cwt)	(1,000 cwt)	(1,000 cwt)	(1,000 cwt)
August .....	24.20	17.10	19.00	1,826	2,121	2,041
September ....	22.60	16.90	17.80	1,936	2,331	2,197
October .....	17.90	18.80	15.90	4,752	2,836	2,760
November .....	18.30	18.90	15.70	3,602	4,156	3,732
December .....	17.80	19.50	15.20	4,824	6,052	4,239
January <sup>3</sup> .....	18.40	19.60		5,766	6,084	
February .....	18.10	18.80		3,992	3,121	
March .....	17.90	18.50		4,044	3,307	
April .....	18.40	18.60		3,397	3,165	
May .....	17.90	19.00		3,090	3,016	
June .....	17.50	18.40		2,646	1,744	
July .....	16.90	19.00		2,863	2,503	
MYA .....	18.40	18.80		42,738	40,436	

<sup>1</sup> Purchases from producers as reported by private firms and rice (rough equivalent) shipped from producers as reported by cooperative mills.

<sup>2</sup> Prices and marketings include late reports and revised data for August 2011 - November 2011. Final monthly prices and marketings and MYA prices will be published in the January 2013 *Agricultural Prices* report.

<sup>3</sup> Second year.

## Parity Prices

Parity prices based on data for January 2012 and adjusted base price data from which parity prices are computed, are presented in the table on pages 41 through 45. Annual average prices for 2001 through 2011 for use in parity computations, and ten-year averages for 2001-2010 and 2002-2011 are shown on pages 46 through 55.

Parity Prices shown on the following pages are computed under the provisions of Title III, Subtitle A, Section 301(a) of the Agricultural Adjustment Act of 1938 as amended by the Agricultural Acts of 1948, 1949, 1954, and 1956.

The major provisions of the amended Act relating to the calculation of parity prices are as follows:

"(1) (A) The 'parity price' for any agricultural commodity, as of any date, shall be determined by multiplying the adjusted base price of such commodity as of such date by the parity index as of such date."

"(B) The 'adjusted base price' of any agricultural commodity, as of any date, shall be (i) the average of the prices received by farmers for such commodity, at such time as the Secretary may select during each year of the ten-year period ending on the 31st of December last before such date, or during each marketing season beginning in such period if the Secretary determines use of a calendar year basis to be impracticable, divided by (ii) the ratio of the general level of prices received by farmers for agricultural commodities during the period January 1910 to December 1914, inclusive."

"(C) The 'parity index', as of any date, shall be the ratio of (i) the general level of prices for articles and services that farmers buy, wages paid hired farm labor, interest on farm indebtedness secured by farm real estate, and taxes on farm real estate, for the calendar month ending last before such date to (ii) the general level of such prices, wages, rates, and taxes during the period January 1910 to December 1914, inclusive."

"(D) The prices and indexes provided for herein, and the data used in computing them, shall be determined by the Secretary, whose determination shall be final."

Section 301(a) (1) (F) outlines authority for the Secretary of Agriculture to make special adjustments in the method of computing parity prices for particular commodities if the method outlined in the Act results in parity prices seriously out of line with those of other commodities.

The parity prices shown in this report are based on the provisions of the amended Act. Briefly, the actual method of computation is as follows:

a. The average of prices received by farmers for individual commodities for the 10 preceding years is calculated (for 2012 this is the 2002-2011 average). An allowance for unredeemed loans and other supplemental payments resulting from price support programs, such as the deficiency payments for grains and cotton, is included for those commodities for which applicable.

b. This 10-year average is divided by the average of the Index of Prices Received by Farmers for the same 10 preceding calendar years, adjusted to include an allowance for unredeemed loans and other supplemental price support operations, to give an "adjusted base price".

c. Parity prices are computed by multiplying the "adjusted base prices" by the current Parity Index (the Index of Prices Paid by Farmers, including Interest, Taxes, and Wage Rates, 1910-1914=100).

Parity prices are calculated in terms of prices received by farmers in the local markets in which they ordinarily sell. This means that the parity prices apply to the average of all classes and grades of the commodity as sold by all farmers in the United States, except as otherwise specified. Fruits and vegetables for fresh use and for processing are usually considered separate commodities and separate parity prices are calculated. The Agricultural Marketing Agreement Act of 1937 provided for parity prices for certain commodities covered by a marketing agreement or order program. Under present legislation, United States parity prices, with appropriate adjustments where needed, may be used for the purpose of this Act.

The indexes used in the computation of parity prices are published currently in *Agricultural Prices*. For the purpose of illustrating the computation of parity prices, the calculation of the parity price for corn based on data for January 2012 is given below.

The 120-month, January 2002-December 2011 average of prices received by farmers for corn was \$3.56 per bushel, adjusted to allow for unredeemed loans and other supplemental payments resulting from price support operations. The 120-month average of the Index of Prices Received by Farmers, adjusted to include an allowance for unredeemed loans, etc., was 861 (1910-1914=100). The adjusted base price is obtained by dividing \$3.56 by 8.61. The adjusted base prices when multiplied by 2760 percent, the Parity Index (1910-1914=100), results in the corn parity price of \$11.40 for January 2012.

### Prices Received For Average Base Period – United States: January 1910-December 1914

Commodity and unit	Average Price
All wheat ..... dollars/bushel	0.880
Rice rough ..... dollars/cwt	1.81
Corn ..... dollars/bushel	0.649
Oats ..... dollars/bushel	0.399
All barley ..... dollars/bushel	0.617
All hay, baled ..... dollars/ton	11.90
Cotton, Upland ..... cents/pound	11.92
Peanuts ..... cents/pound	4.83
Cottonseed ..... dollars/ton	21.80
Flaxseed ..... dollars/bushel	1.68
Potatoes ..... dollars/cwt	1.13
Sweet potatoes ..... dollars/cwt	1.61
Dry edible beans ..... dollars/cwt	3.39
All beef cattle ..... dollars/cwt	5.52
Calves ..... dollars/cwt	6.84
All hogs ..... dollars/cwt	7.29
Lambs ..... dollars/cwt	5.96
Sheep ..... dollars/cwt	4.59
All milk ..... dollars/cwt	1.61
All eggs ..... cents/dozen	21.60
Turkeys, live ..... cents/pound	14.30
Wool ..... cents/pound	17.80

## The Parity Ratio

The parity ratio (the Index of Prices Received by Farmers for the products they sell divided by the Parity Index (1910-1914=100) provides an indication of the per unit purchasing power of farm commodities generally in terms of the goods and services currently bought by farmers, in relation to purchasing power of farm products in the 1910-1914 base period. Thus, a Parity Ratio less than 100 indicates that the average per unit purchasing power of all farm products is lower than during the 1910-1914 period.

The parity ratio is a measure of price relationships; not a measure of farm income, farmers' total purchasing power, or farmers' welfare. The latter depends upon a number of factors other than price relationships, such as changes in production efficiency and technology, quantities of farm products sold, and supplementary income, including that from off-farm jobs and federal programs.

An adjusted parity ratio is computed and published which incorporates supplementary income for federal farm programs. A "preliminary adjusted parity ratio reflecting government payments" based on the forecast of direct government payments for the year is published each quarter in *Agricultural Prices*.

**Prices Received Adjusted Base Prices and Parity Prices – United States:  
January 2012**

Commodity and unit	Adjusted base price <sup>1</sup> (dollars)	Parity price <sup>2</sup> (dollars)
<b>Basic commodities</b>		
All wheat <sup>3</sup> .....bushel	0.634	17.50
Rice <sup>3</sup> .....cwt	1.46	40.30
Corn <sup>3</sup> .....bushel	0.414	11.40
Cotton		
Upland <sup>3</sup> ..... pound	0.072	1.99
American Pima ..... pound	0.141	3.89
Peanuts ..... pound	0.026	0.718
<b>Tobacco</b>		
Flue-cured, 11-14 ..... pound	0.196	5.41
Fire-cured, 21-23 ..... pound	0.283	7.81
Burley, 31 ..... pound	0.202	5.58
Maryland, 32 ..... pound	0.174	4.80
Dark air-cured, 35-37 ..... pound	0.256	7.07
Pennsylvania seedleaf, 41 ..... pound	0.182	5.02
Cigar binder, 51 ..... pound	0.640	17.70
Cigar wrapper, 61 ..... pound	2.88	79.50
Small chickpeas .....cwt	(NA)	(NA)
Large chickpeas .....cwt	(NA)	(NA)
Lentils .....cwt	(NA)	(NA)
<b>Designated nonbasic commodities</b>		
Soybeans <sup>3</sup> .....bushels	1.000	27.60
All milk sold to plants .....cwt	1.80	49.70
Honey, wholesale ..... pound	0.139	3.84
<b>Wool and mohair</b>		
Wool <sup>3</sup> ..... pound	0.104	2.87
Mohair ..... pound	0.333	9.19
<b>Other nonbasic commodities</b>		
Field crops and miscellaneous		
All barley <sup>3</sup> .....bushel	0.436	12.00
Canola .....cwt	1.82	50.20
Cottonseed ..... ton	17.40	480.00
Dry edible beans .....cwt	3.01	83.10
Flaxseed .....bushel	1.100	30.40
Hay, baled ..... ton	13.10	362.00
Hops ..... pound	0.306	8.45
Mustard seed .....cwt	2.82	77.80
Oats <sup>3</sup> .....bushel	0.263	7.26
Peppermint oil <sup>3</sup> ..... pound	1.79	49.40
Potatoes .....cwt	0.855	23.60
Rapeseed .....cwt	2.23	61.50
Rye .....bushel	0.525	14.50
Safflower .....cwt	2.02	55.80
Sorghum grain <sup>3</sup> .....cwt	0.729	20.10
Spearmint oil ..... pound	1.50	41.40
Sunflower .....cwt	2.06	56.90
Sweet potatoes .....cwt	2.20	60.70

See footnote(s) at end of table.

--continued

**Prices Received Adjusted Base Prices and Parity Prices – United States: January 2012 (continued)**

Commodity and unit	Adjusted base price <sup>1</sup> (dollars)	Parity price <sup>2</sup> (dollars)
<b>Citrus (equivalent on-tree)</b>		
Grapefruit <sup>4</sup> ..... box	0.690	19.00
Lemons <sup>4</sup> ..... box	1.37	37.80
Oranges <sup>4</sup> ..... box	0.698	19.30
Tangerines <sup>4</sup> ..... box	1.49	41.10
<b>Deciduous and other fruit</b>		
<b>Apples</b>		
Fresh <sup>5</sup> ..... pound	0.033	0.911
Processing <sup>4 18</sup> ..... ton	16.10	444.00
<b>Apricots</b>		
Fresh <sup>18</sup> ..... ton	114.00	3,150.00
Processing ..... ton		
Dried (California) <sup>18</sup> ..... ton	262.00	7,230.00
Excluding dried <sup>18</sup> ..... ton	37.30	1,030.00
Avocados <sup>4 18</sup> ..... ton	198.00	5,460.00
<b>Cherries</b>		
Sweet <sup>18</sup> ..... ton	210.00	5,800.00
Tart <sup>4 18</sup> ..... pound	0.034	0.938
Cranberries <sup>4 18</sup> ..... barrel	4.89	135.00
Dates (California) <sup>6 18</sup> ..... ton	183.00	5,050.00
<b>Grapes</b>		
Raisin varieties dried (California) <sup>18</sup> ..... ton	117.00	3,230.00
Excluding raisin varieties dried <sup>18</sup> ..... ton	65.40	1,810.00
Kiwifruit <sup>4 18</sup> ..... ton	94.40	2,610.00
<b>Nectarines (California)</b>		
Fresh <sup>6 18</sup> ..... ton	55.30	1,530.00
<b>Olives (California) <sup>8</sup></b>		
<b>Processing</b>		
Crushed for oil <sup>18</sup> ..... ton	55.50	1,530.00
Excluding crushed <sup>18</sup> ..... ton	78.40	2,160.00
Canning <sup>18</sup> ..... ton	87.40	2,410.00
Papayas (Hawaii), fresh <sup>18</sup> ..... pound	0.046	1.270
<b>Peaches</b>		
Fresh <sup>5 8 18</sup> ..... ton	83.00	2,290.00
<b>Processing</b>		
Dried (California) <sup>7 18</sup> ..... ton	57.30	1,580.00
Excluding dried		
Clingstone (California) <sup>8 18</sup> ..... ton	33.70	930.00
Freestone <sup>7 18</sup> ..... ton	26.80	740.00
<b>Pears</b>		
Fresh <sup>5 18</sup> ..... ton	55.60	1,530.00
<b>Processing <sup>7 18</sup></b>		
Dried (California) ..... ton	178.00	4,910.00
Excluding dried <sup>18</sup> ..... ton	36.80	1,020.00

See footnote(s) at end of table.

--continued

**Prices Received Adjusted Base Prices and Parity Prices – United States: January 2012 (continued)**

Commodity and unit	Adjusted base price <sup>1</sup> (dollars)	Parity price <sup>2</sup> (dollars)
Deciduous and other fruit, continued		
Plums (California) equiv on-tree		
Fresh <sup>9 18</sup> .....	60.20	1,660.00
Processing <sup>18</sup> .....	7.65	211.00
Prunes, dried (California) <sup>4 18</sup> .....	147.00	4,060.00
Prunes & plums (excluding California)		
Fresh <sup>9 18</sup> .....	63.80	1,760.00
Processing <sup>7 18</sup> .....	25.70	709.00
Strawberries		
Fresh <sup>7</sup> .....	9.210	254.00
Processing .....	3.520	97.20
Sugar crops		
Sugarbeets <sup>4 11</sup> .....	5.27	145.00
Sugarcane <sup>4 11</sup> .....	3.45	95.20
Tree nuts <sup>12 18</sup>		
Almonds .....	0.209	5.77
Hazelnuts .....	183.00	5,050.00
Pecans, all .....	332.00	9,160.00
Pistachio, all .....	0.194	5.35
Walnuts .....	177.00	4,890.00
Vegetables, fresh <sup>10</sup>		
Asparagus .....	11.80	326.00
Broccoli <sup>13</sup> .....	4.02	111.00
Carrots <sup>13</sup> .....	2.69	74.20
Cauliflower <sup>13</sup> .....	4.31	119.00
Celery <sup>13</sup> .....	2.01	55.50
Honeydew melons .....	2.09	57.70
Lettuce .....	2.29	63.20
Onions <sup>13</sup> .....	1.49	41.10
Sweet corn .....	2.71	74.80
Tomatoes .....	4.68	129.00
Vegetables, processing <sup>7</sup>		
Asparagus .....	145.00	4,000.00
Green peas .....	33.70	930.00
Snap beans .....	20.60	569.00
Sweet corn .....	9.90	273.00
Tomatoes .....	8.00	221.00
Livestock and products		
Beef cattle .....	10.10	279.00
Broilers .....	0.049	1.350
Calves .....	13.90	384.00
Eggs .....	0.091	2.51
Hogs .....	5.53	153.00
Turkeys .....	0.057	1.57

See footnote(s) at end of table.

--continued

**Prices Received Adjusted Base Prices and Parity Prices – United States: January 2012 (continued)**

Commodity and unit	Adjusted base price <sup>1</sup> (dollars)	Parity price <sup>2</sup> (dollars)
Discontinued nonbasic commodities <sup>14</sup>		
Field crops and miscellaneous		
Crude pine gum ..... barrel	13.90	384.00
Dry field peas ..... cwt	1.89	52.20
Popcorn ..... cwt	1.81	50.00
Tobacco		
Virginia fire-cured, 21 ..... pound	0.254	7.01
Kentucky-Tennessee fire-cured, 22-23 ..... pound	0.319	8.80
Dark air-cured, 35-36 ..... pound	0.282	7.78
Sun-cured, 37 ..... pound	0.235	6.49
Cigar filler & binder 42-44, 54-55 ..... pound	0.222	6.13
Puerto Rican filler, 46 ..... pound	0.155	4.28
Tobacco, 62 <sup>15</sup> ..... pound	3.300	91.10
Citrus (equiv on-tree)		
Temples ..... box	0.37	10.30
Deciduous and other fruit		
Berries, processing		
Blackberries ..... pound	0.620	17.10
Black raspberries ..... pound	0.106	2.93
Boysenberries/youngberries ..... pound	0.088	2.43
Gooseberries ..... pound	0.037	1.020
Loganberries ..... pound	0.060	1.66
Red raspberries ..... pound	0.084	2.32
Nectarines, processing <sup>16</sup> ..... ton	4.21	116.00
Seed crops		
Alfalfa ..... cwt	19.30	533.00
Bentgrass ..... cwt	18.90	522.00
Chewings fescue ..... cwt	10.00	276.00
Crimson clover ..... cwt	8.40	232.00
Hairy vetch ..... cwt	5.81	160.00
Ladino clover ..... cwt	24.70	682.00
Lespedeza ..... cwt	8.31	229.00
Merion Kentucky bluegrass ..... cwt	22.00	607.00
Orchardgrass ..... cwt	7.16	198.00
Red clover ..... cwt	12.00	331.00
Red fescue ..... cwt	10.10	279.00
Tall fescue ..... cwt	3.67	101.00
Timothy ..... cwt	6.40	177.00
Vegetables, fresh		
Artichokes ..... cwt	4.55	126.00
Cabbage ..... cwt	1.38	38.10
Cantaloupes ..... cwt	2.13	58.80
Cucumbers ..... cwt	2.28	62.90
Eggplant ..... cwt	2.41	66.50
Escarole ..... cwt	3.10	85.60
Garlic ..... cwt	2.93	80.90
Green peppers ..... cwt	3.60	99.40
Snap beans ..... cwt	4.51	124.00
Spinach ..... cwt	3.95	109.00
Watermelon ..... cwt	0.846	23.30
Vegetables, processing		
Beets ..... ton	7.79	215.00
Cabbage ..... ton	6.01	166.00
Lima beans ..... ton	67.00	1,850.00
Spinach ..... ton	14.50	400.00
Livestock and products		
Beeswax ..... pound	0.291	8.03
Lambs <sup>17</sup> ..... cwt	11.70	323.00
Sheep <sup>17</sup> ..... cwt	4.38	119.00

See footnote(s) at end of table.

--continued

## Adjusted Base Price and United States Parity Prices Based on data for January 2012 (continued)

(NA) Not available.

- 1/ Adjusted base price 1910-1914 derived by dividing the average of 10 season average prices 2002-2011, including an allowance where appropriate for unredeemed loans and other supplemental payments resulting from price support operations, by 861 percent (120-month, January 2002-December 2011 average of the index of prices received by farmers adjusted to include an allowance for unredeemed loans and other supplemental payments) unless otherwise noted.
- 2/ These parity prices are the legally applicable parity prices for the following calendar month.
- 3/ Adjusted base price 1910-1914 derived from 120-month, January 2002-December 2011 average including an allowance where appropriate for unredeemed loans and other supplemental payments resulting from price support operations.
- 4/ The 2011 marketing year average prices are not yet available for these commodities. Therefore, the adjusted base prices are brought forward from 2010, except citrus items (excluding limes) and cranberries.
- 5/ Equivalent packinghouse-door returns for California, Michigan, New York (apples only), and Washington (apples, peaches, and pears). Prices "as sold" for other states.
- 6/ Equivalent returns at packinghouse-door.
- 7/ Equivalent returns at processing plant door.
- 8/ Equivalent returns for bulk fruit at first delivery point.
- 9/ Based on 'as sold' prices for fresh fruit in all states.
- 10/ Average FOB shipping point prices.
- 11/ Relates to prices including average conditional payments per ton made under the sugar acts of 1937 and 1948. Crop deficiency and abandonment payments not included.
- 12/ Prices on in-shell basis except almonds which are on shelled basis.
- 13/ Includes some processing.
- 14/ Monthly and/or season average prices are no longer estimated for these items. Therefore, the adjusted base price is brought forward from July 1986.
- 15/ Monthly and/or season average prices are no longer estimated for this item. The adjusted base price is brought forward from 1988.
- 16/ Processing prices combined with fresh beginning in 2002.
- 17/ Sheep and lamb prices discontinued January 2011.
- 18/ Non-citrus fruit and tree nut estimates discontinued October 2011. The program was later reinstated with a publication date of March 15, 2012. Parity prices will be published in the July 2012 "Agricultural Prices" report to include these prices.

## Prices Received Calendar Year Average Prices and Index used to Calculate Agricultural Commodity Parity Prices – United States: 2002-2011

[Average used to compute "adjusted base prices". Averages for 2011 and 2002-2011 are preliminary. Simple average of monthly prices]

Commodity and unit	2002	2003	2004	2005	2006	2007	2008
Prices received index, 1910-1914=100 ..... percent	620	674	751	726	730	862	947
	(dollars)	(dollars)	(dollars)	(dollars)	(dollars)	(dollars)	(dollars)
<b>Basic commodities</b>							
Corn .....bushel	2.13	2.27	2.47	1.96	2.28	3.39	4.78
Cotton, Upland ..... pound	0.336	0.517	0.543	0.427	0.475	0.500	0.608
All wheat .....bushel	3.41	3.45	3.57	3.36	4.03	5.76	8.02
Rice .....cwt	4.07	5.78	8.43	7.04	8.73	10.50	16.20
Small chickpeas <sup>1</sup> .....cwt	(NA)	16.00	14.20	14.20	15.50	15.70	26.70
Large chickpeas <sup>1</sup> .....cwt	(NA)	22.40	25.60	26.30	27.80	28.40	35.30
Lentils <sup>1</sup> .....cwt	(NA)	17.20	14.40	11.00	10.50	17.20	32.40
<b>Designated nonbasic commodities</b>							
All milk .....cwt	12.10	12.50	16.10	15.10	12.90	19.10	18.30
<b>Other nonbasic commodities</b>							
<b>Field crops and miscellaneous</b>							
All barley .....bushel	2.39	2.86	2.61	2.43	2.72	3.59	5.00
All dry beans .....cwt	22.60	17.70	21.20	24.10	19.50	25.60	34.30
Flaxseed .....bushel	5.23	6.00	7.18	8.87	5.50	8.73	15.40
All hay, baled ..... ton	93.70	88.80	89.50	96.30	105.00	124.00	148.00
Oats .....bushel	1.88	1.71	1.52	1.64	1.82	2.44	3.29
Sorghum .....cwt	3.80	3.96	4.13	3.21	4.34	6.27	8.12
Soybeans .....bushel	4.93	6.08	7.56	5.95	5.65	7.74	11.30
All sunflower .....cwt	11.60	11.80	13.10	14.10	12.00	17.00	25.30
<b>Fruit</b>							
Apples, fresh <sup>2</sup> ..... pound	0.241	0.257	0.273	0.217	0.270	0.325	0.394
<b>Livestock and products</b>							
Beef cattle .....cwt	66.60	80.00	85.50	89.60	87.10	90.00	89.20
Broilers ..... pound	0.298	0.353	0.452	0.433	0.361	0.439	0.466
Calves .....cwt	97.60	103.60	121.60	135.00	133.00	122.00	114.00
Eggs ..... dozen	0.607	0.746	0.697	0.545	0.590	0.929	1.060
All hogs .....cwt	33.30	37.50	51.20	49.60	46.30	46.70	47.70
Turkeys ..... pound	0.365	0.346	0.414	0.445	0.476	0.520	0.564

See footnote(s) at end of table.

--continued

**Prices Received Calendar Year Average Prices and Index used to Calculate Agricultural Commodity Parity Prices – United States: 2002-2011 (continued)**

[Average used to compute "adjusted base prices". Averages for 2011 and 2002-2011 are preliminary. Simple average of monthly prices]

Commodity and unit	2009	2010	2011	2001-2010 Average	2002-2011 Average	
					As computed	For parity purposes <sup>3</sup>
Prices received index, 1910-1914=100 .....	829	895	1,126	771	816	861
	(dollars)	(dollars)	(dollars)	(dollars)	(dollars)	(dollars)
<b>Basic commodities</b>						
Corn .....	3.75	3.83	6.01	2.88	3.29	3.56
Cotton, Upland .....	0.492	0.710	0.880	0.500	0.549	0.616
All wheat .....	5.30	5.12	7.44	4.49	4.95	5.46
Rice .....	15.20	13.20	13.50	9.43	10.30	12.60
Small chickpeas <sup>1</sup> .....	19.90	22.80	23.50	(NA)	(NA)	(NA)
Large chickpeas <sup>1</sup> .....	31.10	28.50	39.20	(NA)	(NA)	(NA)
Lentils <sup>1</sup> .....	26.80	25.70	27.50	(NA)	(NA)	(NA)
<b>Designated nonbasic commodities</b>						
All milk .....	12.80	16.30	20.10	15.00	15.50	15.50
<b>Other nonbasic commodities</b>						
<b>Field crops and miscellaneous</b>						
All barley .....	4.83	4.00	4.78	3.26	3.52	3.75
All dry beans .....	31.00	27.90	34.60	24.10	25.90	25.90
Flaxseed .....	8.60	10.20	14.20	7.97	8.99	9.43
All hay, baled .....	117.00	110.00	157.00	107.00	113.00	113.00
Oats .....	2.30	2.37	3.42	2.04	2.24	2.26
Sorghum .....	5.59	6.50	10.70	4.93	5.66	6.28
Soybeans .....	10.10	9.97	12.50	7.37	8.18	8.61
All sunflower .....	18.70	16.80	29.10	14.90	17.00	17.70
<b>Fruit</b>						
Apples, fresh <sup>2</sup> .....	0.233	0.274	0.336	0.266	0.282	0.282
<b>Livestock and products</b>						
Beef cattle .....	80.40	92.00	113.00	83.20	87.30	87.30
Broilers .....	0.453	0.493	0.467	0.414	0.422	0.422
Calves .....	108.00	121.00	142.00	116.00	120.00	120.00
Eggs .....	0.822	0.857	0.970	0.746	0.782	0.782
All hogs .....	42.00	55.00	66.50	45.30	47.60	47.60
Turkeys .....	0.499	0.612	0.679	0.463	0.492	0.492

(NA) Not available.

<sup>1</sup> Data not available for all years to calculate ten year average price.

<sup>2</sup> Equivalent packinghouse-door returns for California, New York (applies only starting in 1985), Oregon (except peaches), and Washington. Prices "as sold" for other states.

<sup>3</sup> Includes an allowance for price support operations as authorized by the Secretary of Agriculture, January 30, 1956. This entry is omitted for commodities not affected by the adjustment.

**Prices Received Market Year Average Prices used to Calculate Agricultural Commodity Parity Prices – United States: 2002-2011**

[Average used to compute "adjusted base prices". Averages for 2011 and 2002-2011 are preliminary. Prices are the averages for the marketing season computed by weighting state prices by quantities sold]

Commodity and unit	2002	2003	2004	2005	2006	2007
	(dollars)	(dollars)	(dollars)	(dollars)	(dollars)	(dollars)
<b>Basic Commodities</b>						
Cotton, American Pima .....	0.860	1.210	1.268	1.244	0.943	0.988
Peanuts .....	0.182	0.193	0.189	0.173	0.177	0.205
<b>Tobacco</b>						
Flue-cured 11-14 .....	1.820	1.851	1.845	1.474	1.496	1.527
Fire-cured 21-23 .....	2.357	2.455	2.513	2.369	2.392	2.401
Burley 31 .....	1.974	1.977	1.994	1.564	1.638	(D)
Maryland 32 .....	1.348	1.463	1.308	1.350	1.500	(D)
Dark air-cured 35-37 .....	2.098	2.154	2.187	2.137	2.200	2.197
Pennsylvania Seedleaf, 41 .....	1.450	1.400	1.450	1.450	1.550	1.650
Cigar binder, 51 .....	5.372	3.584	5.309	5.645	6.586	6.472
Cigar wrapper, 61 .....	22.500	26.000	25.300	21.000	21.700	24.500
<b>Designated nonbasic commodities</b>						
Honey .....	1.327	1.387	1.088	0.922	1.005	1.077
<b>Wool and mohair <sup>1</sup></b>						
Wool .....	0.530	0.740	0.800	0.710	0.710	0.870
Mohair .....	1.58	1.66	1.94	2.73	3.59	3.64
<b>Other nonbasic commodities</b>						
<b>Field crops and miscellaneous</b>						
Canola .....	10.60	10.60	10.70	9.62	11.90	18.30
Cottonseed .....	101.00	117.00	107.00	96.00	111.00	162.00
Hops .....	1.91	1.86	1.88	1.94	2.05	2.99
Mustard seed .....	15.40	16.00	15.20	13.50	13.70	28.00
Peppermint oil .....	11.90	12.00	11.90	12.20	12.70	13.60
Potatoes .....	6.67	5.88	5.65	7.04	7.31	7.51
Rapeseed .....	9.73	11.00	14.10	14.30	14.90	17.70
Rye .....	3.32	2.93	3.22	3.30	3.32	5.01
Safflower .....	12.20	13.70	12.10	12.40	13.50	18.60
Spearmint oil .....	9.11	9.29	9.62	10.70	11.30	12.60
Sweet potatoes .....	16.80	19.20	17.50	18.10	18.20	18.30

See footnote(s) at end of table.

--continued

**Prices Received Market Year Average Prices used to Calculate Agricultural Commodity Parity Prices – United States: 2002-2011 (continued)**

[Average used to compute "adjusted base prices". Averages for 2011 and 2002-2011 are preliminary. Prices are the averages for the marketing season computed by weighting state prices by quantities sold]

Commodity and unit	2008	2009	2010	2011	2001-10 Average	2002-11 Average
	(dollars)	(dollars)	(dollars)	(dollars)	(dollars)	(dollars)
<b>Basic Commodities</b>						
Cotton, American Pima ..... pound	0.989	1.170	1.790	(D)	1.130	1.210
Peanuts ..... pound	0.230	0.217	0.225	0.280	0.203	0.207
<b>Tobacco</b>						
Flue-cured 11-14 ..... pound	1.757	1.754	1.690	1.698	1.710	1.690
Fire-cured 21-23 ..... pound	2.460	2.468	2.467	2.558	2.400	2.440
Burley 31 ..... pound	1.669	1.709	1.549	1.747	1.760	1.740
Maryland 32 ..... pound	(D)	1.600	1.550	1.600	1.500	1.500
Dark air-cured 35-37 ..... pound	2.246	2.242	2.242	2.278	2.150	2.200
Pennsylvania Seedleaf, 41 ..... pound	1.700	1.700	1.750	1.600	1.580	1.570
Cigar binder, 51 ..... pound	5.805	5.039	5.245	6.000	5.460	5.510
Cigar wrapper, 61 ..... pound	28.500	25.000	29.000	(D)	24.400	24.800
<b>Designated nonbasic commodities</b>						
Honey ..... pound	1.421	1.473	1.603	(NA)	1.200	(NA)
<b>Wool and mohair<sup>1</sup></b>						
Wool ..... pound	0.980	0.790	1.150	1.670	0.760	0.892
Mohair ..... pound	3.31	2.65	3.49	4.12	2.67	2.87
<b>Other nonbasic commodities</b>						
<b>Field crops and miscellaneous</b>						
Canola ..... cwt	18.70	16.20	19.30	23.00	13.50	14.90
Cottonseed ..... ton	223.00	158.00	161.00	260.00	133.00	150.00
Hops ..... pound	4.03	3.57	3.28	2.77	2.54	2.63
Mustard seed ..... cwt	43.80	30.40	25.90	33.30	21.40	23.50
Peppermint oil ..... pound	15.90	20.10	20.30	23.00	14.20	15.40
Potatoes ..... cwt	9.09	8.25	9.20	(NA)	7.36	(NA)
Rapeseed ..... cwt	25.30	26.30	23.40	27.00	16.80	18.40
Rye ..... bushel	6.32	4.93	5.03	7.77	4.02	4.52
Safflower ..... cwt	24.80	17.10	17.20	24.30	15.30	16.60
Spearmint oil ..... pound	14.90	16.50	16.20	18.70	11.90	12.90
Sweet potatoes ..... cwt	21.20	21.80	20.10	18.00	18.70	18.90

See footnote(s) at end of table.

--continued

**Prices Received Market Year Average Prices used to Calculate Agricultural Commodity Parity Prices – United States: 2002-2011 (continued)**

[Average used to compute "adjusted base prices". Averages for 2011 and 2002-2011 are preliminary. Prices are the averages for the marketing season computed by weighting state prices by quantities sold]

Commodity and unit	2002	2003	2004	2005	2006	2007
	(dollars)	(dollars)	(dollars)	(dollars)	(dollars)	(dollars)
Fruit, citrus (equivalent on-tree) <sup>2</sup>						
Grapefruit .....box	2.64	3.03	3.66	12.65	8.74	5.19
Lemons .....box	11.36	6.53	8.01	8.17	10.59	15.98
Oranges .....box	4.25	3.56	3.74	4.41	6.11	9.84
Tangerines .....box	9.59	10.06	8.36	13.01	10.64	14.81
Deciduous and Other Fruit						
Apples <sup>3</sup>						
Processing .....ton	130.00	131.00	107.00	106.00	129.00	190.00
Apricots						
Fresh <sup>4</sup> .....ton	678.00	618.00	672.00	1,100.00	1,450.00	829.00
Processing <sup>3</sup>						
Dried (California) .....ton	1,590.00	1,760.00	1,950.00	2,060.00	2,600.00	1,510.00
Excluding dried .....ton	268.00	262.00	279.00	266.00	314.00	325.00
Avocados .....ton	1,920.00	1,690.00	1,620.00	1,130.00	1,800.00	1,770.00
Cherries						
Sweet .....ton	1,550.00	1,410.00	1,570.00	1,990.00	1,620.00	1,820.00
Tart .....pound	0.448	0.354	0.328	0.238	0.215	0.273
Cranberries .....barrel	32.20	33.90	32.90	35.20	41.10	50.70
Dates (California) .....ton	1,550.00	1,380.00	1,310.00	1,430.00	2,140.00	2,290.00
Grapes						
Raisin varieties						
Dried (California) .....ton	393.00	563.00	1,210.00	1,000.00	1,070.00	1,040.00
Excluding raisin variety, dried .....ton	490.00	491.00	522.00	507.00	599.00	567.00
Kiwifruit <sup>5</sup> .....ton	783.00	853.00	809.00	620.00	911.00	950.00
Nectarines						
Fresh <sup>5 6</sup> .....ton	382.00	436.00	342.00	507.00	522.00	340.00
Olives (California)						
Processing <sup>7</sup>						
Crushed for oil .....ton	240.00	238.00	361.00	526.00	405.00	775.00
Excluding crushed .....ton	594.00	420.00	589.00	568.00	855.00	643.00
Canning <sup>7</sup> .....ton	662.00	458.00	701.00	667.00	926.00	700.00

See footnote(s) at end of table.

--continued

**Prices Received Market Year Average Prices used to Calculate Agricultural Commodity Parity Prices – United States: 2002-2011 (continued)**

[Average used to compute "adjusted base prices". Averages for 2011 and 2002-2011 are preliminary. Prices are the averages for the marketing season computed by weighting state prices by quantities sold]

Commodity and unit	2008	2009	2010	2011	2001-2010 Average	2002-2011 Average
	(dollars)	(dollars)	(dollars)	(dollars)	(dollars)	(dollars)
Fruit, citrus (equivalent on-tree) <sup>2</sup>						
Grapefruit ..... box	4.80	4.37	7.28	7.06	5.49	5.94
Lemons ..... box	26.59	8.32	11.29	11.18	11.20	11.80
Oranges ..... box	6.74	6.62	7.67	7.15	5.68	6.01
Tangerines ..... box	14.25	14.77	14.69	17.84	11.80	12.80
Deciduous and Other Fruit						
Apples <sup>3</sup>						
Processing ..... ton	198.00	132.00	183.00	(NA)	141.00	(NA)
Apricots						
Fresh <sup>4</sup> ..... ton	918.00	1,150.00	1,350.00	(NA)	942.00	(NA)
Processing <sup>3</sup>						
Dried (California) ..... ton	2,364.00	2,970.00	2,860.00	(NA)	2,160.00	(NA)
Excluding dried ..... ton	350.00	371.00	367.00	(NA)	306.00	(NA)
Avocados ..... ton	1,850.00	1,440.00	2,160.00	(NA)	1,710.00	(NA)
Cherries						
Sweet ..... ton	2,390.00	1,330.00	2,350.00	(NA)	1,730.00	(NA)
Tart ..... pound	0.377	0.192	0.221	(NA)	0.283	(NA)
Cranberries ..... barrel	58.10	48.20	46.50	(NA)	40.30	(NA)
Dates (California) ..... ton	1,260.00	1,180.00	1,200.00	(NA)	1,510.00	(NA)
Grapes						
Raisin varieties						
Dried (California) ..... ton	1,130.00	1,130.00	1,540.00	(NA)	965.00	(NA)
Excluding raisin variety, dried ..... ton	531.00	569.00	551.00	(NA)	539.00	(NA)
Kiwifruit <sup>5</sup> ..... ton	888.00	847.00	768.00	(NA)	810.00	(NA)
Nectarines						
Fresh <sup>5</sup> ..... ton	367.00	631.00	553.00	(NA)	456.00	(NA)
Olives (California)						
Processing <sup>7</sup>						
Crushed for oil ..... ton	670.00	540.00	575.00	(NA)	463.00	(NA)
Excluding crushed ..... ton	(D)	(D)	(D)	(NA)	646.00	(NA)
Canning <sup>7</sup> ..... ton	767.00	855.00	685.00	(NA)	719.00	(NA)

See footnote(s) at end of table.

--continued

**Prices Received Market Year Average Prices used to Calculate Agricultural Commodity Parity Prices – United States: 2002-2011 (continued)**

[Average used to compute "adjusted base prices". Averages for 2011 and 2002-2011 are preliminary. Prices are the averages for the marketing season computed by weighting state prices by quantities sold]

Commodity and unit	2002	2003	2004	2005	2006	2007
	(dollars)	(dollars)	(dollars)	(dollars)	(dollars)	(dollars)
Papayas, fresh (Hawaii) ..... pound	0.277	0.319	0.361	0.364	0.413	0.417
Peaches						
Fresh <sup>4</sup> ..... ton	613.00	581.00	548.00	718.00	779.00	706.00
Processing <sup>3</sup> ..... ton						
Dried (California) ..... ton	456.00	446.00	382.00	504.00	802.00	530.00
Excluding dried						
Clingstone (California) ..... ton	247.00	215.00	263.00	254.00	292.00	304.00
Freestone ..... ton	198.00	203.00	182.00	187.00	240.00	235.00
Pears						
Fresh <sup>8</sup> ..... ton	361.00	358.00	430.00	461.00	528.00	534.00
Processing <sup>3</sup> ..... ton						
Dried (California) ..... ton	1,320.00	1,350.00	1,030.00	1,620.00	1,410.00	1,800.00
Excluding dried ..... ton	206.00	197.00	201.00	193.00	199.00	489.00
Plums (California)						
Fresh ..... ton	(D)	(D)	(D)	(D)	(D)	(D)
Processing ..... ton	(D)	(D)	(D)	(D)	(D)	(D)
Prunes, dried (California) <sup>3</sup> ..... ton	810.00	772.00	1,500.00	1,470.00	1,390.00	1,450.00
Prunes & plums, excluding California						
Fresh <sup>4</sup> ..... ton	396.00	446.00	468.00	759.00	639.00	622.00
Processing <sup>3</sup> ..... ton	204.00	254.00	228.00	257.00	267.00	213.00
Strawberries						
Fresh <sup>9 10</sup> ..... pound	0.713	0.749	0.684	0.689	0.722	0.821
Processing ..... ton	33.100	28.100	26.300	28.900	28.400	27.700
Sugar crops <sup>11</sup>						
Sugarbeets ..... ton	39.60	41.40	36.90	43.50	44.20	42.00
Sugarcane for sugar ..... ton	28.40	29.50	28.30	28.40	30.40	29.40

See footnote(s) at end of table.

--continued

**Prices Received Market Year Average Prices used to Calculate Agricultural Commodity Parity Prices – United States: 2002-2011 (continued)**

[Average used to compute "adjusted base prices". Averages for 2011 and 2002-2011 are preliminary. Prices are the averages for the marketing season computed by weighting state prices by quantities sold]

Commodity and unit	2008	2009	2010	2011	2001-10 Average	2002-11 Average
	(dollars)	(dollars)	(dollars)	(dollars)	(dollars)	(dollars)
Papayas, fresh (Hawaii) ..... pound	0.455	0.467	0.380	(NA)	0.375	(NA)
Peaches						
Fresh <sup>4</sup> ..... ton	684.00	811.00	782.00	(NA)	684.00	(NA)
Processing <sup>3</sup>						
Dried (California) ..... ton	452.00	359.00	278.00	(NA)	472.00	(NA)
Excluding dried						
Clingstone (California) ..... ton	347.00	338.00	325.00	(NA)	283.00	(NA)
Freestone ..... ton	239.00	263.00	257.00	(NA)	221.00	(NA)
Pears						
Fresh <sup>8</sup> ..... ton	589.00	458.00	591.00	(NA)	464.00	(NA)
Processing <sup>3</sup>						
Dried (California) ..... ton	1,400.00	1,710.00	1,800.00	(NA)	1,470.00	(NA)
Excluding dried ..... ton	530.00	390.00	540.00	(NA)	312.00	(NA)
Plums (California)						
Fresh ..... ton	(D)	(D)	(D)	(NA)	(D)	(NA)
Processing ..... ton	(D)	(D)	(D)	(NA)	(D)	(NA)
Prunes, dried (California) <sup>3</sup> ..... ton	1,500.00	1,230.00	1,180.00	(NA)	1,200.00	(NA)
Prunes & plums, excluding California						
Fresh <sup>4</sup> ..... ton	547.00	472.00	551.00	(NA)	525.00	(NA)
Processing <sup>3</sup> ..... ton	171.00	149.00	193.00	(NA)	212.00	(NA)
Strawberries						
Fresh <sup>9 10</sup> ..... pound	0.841	0.861	0.908	0.944	0.775	0.793
Processing ..... ton	36.000	30.900	29.200	34.800	29.800	30.300
Sugar crops <sup>11</sup>						
Sugarbeets ..... ton	48.10	51.50	66.70	(NA)	45.40	(NA)
Sugarcane for sugar ..... ton	29.50	34.80	41.70	(NA)	29.70	(NA)

See footnote(s) at end of table.

--continued

**Prices Received Market Year Average Prices used to Calculate Agricultural Commodity Parity Prices – United States: 2002-2011 (continued)**

[Average used to compute "adjusted base prices". Averages for 2011 and 2002-2011 are preliminary. Prices are the averages for the marketing season computed by weighting state prices by quantities sold]

Commodity and unit	2002	2003	2004	2005	2006	2007
	(dollars)	(dollars)	(dollars)	(dollars)	(dollars)	(dollars)
Tree nuts <sup>12</sup>						
Almonds ..... pound	1.11	1.57	2.21	2.81	2.06	1.75
Hazelnuts ..... ton	1,000.00	1,030.00	1,440.00	2,240.00	1,080.00	2,040.00
Pecans, all ..... pound	0.955	0.984	1.760	1.450	1.560	1.120
Pistachio, all ..... pound	1.10	1.22	1.34	2.05	1.89	1.41
Walnuts ..... ton	1,170.00	1,160.00	1,390.00	1,570.00	1,630.00	2,290.00
Mushrooms, all ..... pound	1.05	1.06	1.08	1.07	1.05	1.16
Vegetables, fresh <sup>9</sup>						
Asparagus ..... cwt	110.00	105.00	81.30	87.40	88.90	98.90
Broccoli ..... cwt	31.40	32.70	33.20	(D)	33.70	36.70
Carrots ..... cwt	19.10	19.00	20.30	21.00	20.60	22.10
Cauliflower ..... cwt	32.20	35.10	30.80	(D)	32.30	34.40
Celery <sup>13</sup> ..... cwt	13.00	13.60	15.00	14.10	18.40	20.80
Honeydew melons ..... cwt	18.10	18.80	17.60	19.00	18.20	17.70
Lettuce ..... cwt	21.10	18.10	16.90	15.50	16.90	21.70
Onions <sup>13</sup> ..... cwt	12.10	13.70	8.93	12.40	16.10	11.10
Sweet corn ..... cwt	19.20	19.20	19.20	22.10	23.00	22.70
Tomatoes ..... cwt	31.60	37.50	37.40	41.60	43.70	34.80
Vegetables, processing <sup>3</sup>						
Asparagus ..... ton	1,110.00	1,170.00	1,170.00	1,050.00	1,150.00	1,260.00
Green peas ..... ton	253.00	251.00	255.00	270.00	247.00	259.00
Snap beans ..... ton	151.00	157.00	158.00	140.00	157.00	168.00
Sweet corn ..... ton	68.00	70.40	72.10	68.40	66.80	81.80
Tomatoes ..... ton	58.20	58.70	58.60	60.90	66.40	71.20

See footnote(s) at end of table.

--continued

**Prices Received Market Year Average Prices used to Calculate Agricultural Commodity Parity Prices – United States: 2002-2011 (continued)**

[Average used to compute "adjusted base prices". Averages for 2011 and 2002-2011 are preliminary. Prices are the averages for the marketing season computed by weighting state prices by quantities sold]

Commodity and unit	2008	2009	2010	2011	2001-10 Average	2002-11 Average
	(dollars)	(dollars)	(dollars)	(dollars)	(dollars)	(dollars)
Tree nuts <sup>12</sup>						
Almonds ..... pound	1.45	1.65	1.75	(NA)	1.73	(NA)
Hazelnuts ..... ton	1,620.00	1,690.00	2,410.00	(NA)	1,530.00	(NA)
Pecans, all ..... pound	1.340	1.430	2.300	(NA)	1.350	(NA)
Pistachio, all ..... pound	2.05	1.67	2.22	(NA)	1.60	(NA)
Walnuts ..... ton	1,280.00	1,710.00	2,110.00	(NA)	1,540.00	(NA)
Mushrooms, all ..... pound	1.18	1.17	1.17	1.18	1.11	1.12
Vegetables, fresh <sup>9</sup>						
Asparagus .....cwt	103.00	108.00	122.00	120.00	104.00	102.00
Broccoli .....cwt	36.20	39.80	37.60	34.90	33.70	34.60
Carrots .....cwt	24.50	25.20	26.60	33.10	21.60	23.20
Cauliflower .....cwt	40.70	44.30	41.80	46.70	35.30	37.10
Celery <sup>13</sup> .....cwt	18.70	20.40	18.90	20.30	16.80	17.30
Honeydew melons .....cwt	17.80	15.50	15.20	22.00	17.90	18.00
Lettuce .....cwt	20.10	22.40	21.10	23.10	19.20	19.70
Onions <sup>13</sup> .....cwt	11.90	15.00	15.60	11.20	12.80	12.80
Sweet corn .....cwt	25.90	29.30	25.60	26.60	22.60	23.30
Tomatoes .....cwt	45.50	40.40	48.40	42.50	39.10	40.30
Vegetables, processing <sup>3</sup>						
Asparagus ..... ton	1,360.00	1,330.00	1,360.00	1,510.00	1,200.00	1,250.00
Green peas ..... ton	360.00	319.00	287.00	399.00	277.00	290.00
Snap beans ..... ton	219.00	191.00	193.00	236.00	170.00	177.00
Sweet corn ..... ton	120.00	104.00	85.30	115.00	81.00	85.20
Tomatoes ..... ton	79.80	87.20	72.50	75.60	67.30	68.90

(D) Withheld to avoid disclosing data for individual operations.

(NA) Not available.

<sup>1</sup> Average local market price; does not include incentive payment per pound, the 2001-2010 and 2002-2011 averages for parity purposes include this allowance.

<sup>2</sup> Consistent with legislation quoted in this report, citrus prices shown for 2011 relate to the citrus crop designated as 2010-2011 in the production reports.

<sup>3</sup> Equivalent returns at processing plant door.

<sup>4</sup> Based on "as sold" prices for fresh fruit in all states.

<sup>5</sup> Equivalent returns at packinghouse-door. Includes some processing beginning in 2002.

<sup>6</sup> Processed estimates discontinued in 2009.

<sup>7</sup> Equivalent returns for bulk fruit at first delivery point.

<sup>8</sup> Equivalent packinghouse-door returns for California, New York (applies only starting in 1985), Oregon (except peaches), and Washington. Prices "as sold" for other states.

<sup>9</sup> Average F.O.B. shipping point prices.

<sup>10</sup> Includes strawberries for processing in states where the processing crop is not estimated separately.

<sup>11</sup> Prices include average conditional payments per ton made under the sugar acts of 1937 and 1948. Crop deficiency and abandonment payments not included.

<sup>12</sup> Prices on in-shell basis except almonds which are on shelled basis.

<sup>13</sup> Includes some processing.

## Prices Received Indexes Monthly and Annual Average – United States: 2008-2012

[Revised historical price indexes for months not shown are available at [www.nass.usda.gov](http://www.nass.usda.gov). Blank cells indicate estimation period has not begun]

Year	January	February	March	April	May	June	July	August	September	October	November	December	Average <sup>1</sup>
All products 1910-1914 = 100													
2008 ...	917	926	929	926	962	1005	1011	990	980	955	899	858	947
2009 ...	882	799	800	820	820	842	823	798	797	848	858	861	829
2010 ...	861	839	869	857	875	858	878	896	908	956	977	970	895
2011 ...	1054	1083	1100	1115	1111	1140	1147	1161	1137	1165	1166	1136	1126
2012 ...	1180												1180
All products 1990-1992 = 100													
2008 ...	145	146	146	146	152	158	159	156	154	151	142	135	149
2009 ...	139	126	126	129	129	133	130	126	126	134	135	136	131
2010 ...	136	132	137	135	138	135	138	141	143	151	154	153	141
2011 ...	166	171	173	176	175	180	181	183	179	184	184	179	178
2012 ...	186												186
All crops 1910-1914 = 100													
2008 ...	787	814	829	839	857	909	903	878	862	831	784	742	836
2009 ...	797	725	730	747	739	779	737	718	700	747	758	742	743
2010 ...	737	719	744	722	732	713	728	748	753	809	851	843	758
2011 ...	935	992	979	992	1004	1036	1024	1037	1007	1005	1019	981	1001
2012 ...	1031												1031
All crops 1990-1992 = 100													
2008 ...	159	164	167	169	173	183	182	177	174	168	158	150	169
2009 ...	161	146	147	151	149	157	149	145	141	151	153	150	150
2010 ...	149	145	150	146	148	144	147	151	152	163	172	170	153
2011 ...	189	200	198	200	203	209	207	209	203	203	206	198	202
2012 ...	208												208

See footnote(s) at end of table.

--continued

**Prices Received Indexes Monthly and Annual Average – United States: 2008-2012 (continued)**

[Revised historical price indexes for months not shown are available at [www.nass.usda.gov](http://www.nass.usda.gov). Blank cells indicate estimation period has not begun]

Year	January	February	March	April	May	June	July	August	September	October	November	December	Average <sup>1</sup>
Food grains 1910-1914 = 100													
2008 ...	787	927	971	954	895	809	765	813	789	736	725	672	820
2009 ...	698	649	638	633	633	616	559	537	509	516	547	548	590
2010 ...	559	556	547	525	502	459	487	575	598	603	630	677	560
2011 ...	696	735	739	774	801	771	747	789	781	751	745	745	756
2012 ...	714												714
Food grains 1990-1992 = 100													
2008 ...	248	293	306	301	283	255	241	257	249	232	229	212	259
2009 ...	220	205	201	200	200	194	177	170	161	163	172	173	186
2010 ...	177	175	173	166	158	145	154	181	189	190	199	214	177
2011 ...	220	232	233	244	253	243	236	249	247	237	235	235	239
2012 ...	225												225
Feed grains & hay 1910-1914 = 100													
2008 ...	619	689	713	768	809	824	803	808	779	686	668	640	734
2009 ...	671	604	602	599	612	604	551	527	511	553	560	552	579
2010 ...	564	544	546	527	540	529	539	559	617	660	692	721	587
2011 ...	745	828	820	938	948	933	934	1001	961	888	902	902	900
2012 ...	908												908
Feed grains & hay 1990-1992 = 100													
2008 ...	173	193	200	215	227	231	225	227	218	193	187	179	206
2009 ...	188	169	169	168	172	169	154	148	143	155	157	155	162
2010 ...	158	153	153	148	152	148	151	157	173	185	194	202	165
2011 ...	209	232	230	263	266	262	262	281	269	249	253	253	252
2012 ...	255												255

See footnote(s) at end of table.

--continued

**Prices Received Indexes Monthly and Annual Average – United States: 2008-2012 (continued)**

[Revised historical price indexes for months not shown are available at [www.nass.usda.gov](http://www.nass.usda.gov). Blank cells indicate estimation period has not begun]

Year	January	February	March	April	May	June	July	August	September	October	November	December	Average <sup>1</sup>
Cotton 1910-1914 = 100													
2008 ...	521	533	533	554	547	542	560	455	517	498	464	451	515
2009 ...	389	349	342	378	380	381	369	419	450	495	504	537	416
2010 ...	515	550	550	565	564	580	580	640	633	654	690	687	601
2011 ...	695	786	714	734	704	705	698	796	791	781	783	749	745
2012 ...	740												740
Cotton 1990-1992 = 100													
2008 ...	101	104	104	108	107	106	109	89	101	97	90	88	100
2009 ...	76	68	67	74	74	74	72	82	88	97	98	105	81
2010 ...	100	107	107	110	110	113	113	125	123	128	134	134	117
2011 ...	135	153	139	143	137	137	136	155	154	152	153	146	145
2012 ...	144												144
Tobacco 1910-1914 = 100													
2008 ...	1395	1395	1395	1395	1395	1395	1395	1395	1395	1395	1395	1569	1409
2009 ...	1569	1569	1569	1569	1569	1569	1569	1569	1569	1569	1569	1563	1568
2010 ...	1563	1563	1563	1563	1563	1563	1563	1563	1563	1563	1563	1491	1557
2011 ...	1491	1491	1491	1491	1491	1491	1491	1491	1491	1491	1491	1566	1498
2012 ...	1566												1566
Tobacco 1990-1992 = 100													
2008 ...	92	92	92	92	92	92	92	92	92	92	92	104	93
2009 ...	104	104	104	104	104	104	104	104	104	104	104	103	104
2010 ...	103	103	103	103	103	103	103	103	103	103	103	99	103
2011 ...	99	99	99	99	99	99	99	99	99	99	99	104	83
2012 ...	104												104

See footnote(s) at end of table.

--continued

**Prices Received Indexes Monthly and Annual Average – United States: 2008-2012 (continued)**

[Revised historical price indexes for months not shown are available at [www.nass.usda.gov](http://www.nass.usda.gov). Blank cells indicate estimation period has not begun]

Year	January	February	March	April	May	June	July	August	September	October	November	December	Average <sup>1</sup>
Oilseeds 1910-1914 = 100													
2008 ...	974	1150	1125	1180	1190	1292	1308	1248	975	951	949	943	1107
2009 ...	981	945	899	960	1048	1113	1055	1055	867	884	905	942	971
2010 ...	951	920	918	925	919	923	956	976	816	917	1017	1092	944
2011 ...	1132	1248	1250	1288	1296	1301	1299	1311	1104	1124	1179	1164	1225
2012 ...	1155												1155
Oilseeds 1990-1992 = 100													
2008 ...	178	210	205	215	217	236	239	228	178	174	173	172	202
2009 ...	179	172	164	175	191	203	192	192	158	161	165	172	177
2010 ...	173	168	167	169	168	168	174	178	149	167	186	199	172
2011 ...	207	228	228	235	237	237	237	239	201	205	215	212	223
2012 ...	211												211
Fruits & nuts 1910-1914 = 100													
2008 ...	1062	1047	1040	957	1067	1054	1063	1067	1114	1083	1022	883	1038
2009 ...	846	851	859	856	898	912	950	974	1036	1040	1027	958	934
2010 ...	922	998	1000	911	990	992	1030	1054	1101	1136	1228	1004	1030
2011 ...	1044	988	1007	1015	1041	1112	1018	1208	1250	1229	1219	1095	1102
2012 ...	1074												1074
Fruits & nuts 1990-1992 = 100													
2008 ...	152	150	149	137	153	151	152	153	160	155	146	127	149
2009 ...	121	122	123	123	129	131	136	139	148	149	147	137	134
2010 ...	132	143	143	130	142	142	148	151	158	163	176	144	148
2011 ...	150	142	144	145	149	159	146	173	179	176	175	157	158
2012 ...	154												154

See footnote(s) at end of table.

--continued

**Prices Received Indexes Monthly and Annual Average – United States: 2008-2012 (continued)**

[Revised historical price indexes for months not shown are available at [www.nass.usda.gov](http://www.nass.usda.gov). Blank cells indicate estimation period has not begun]

Year	January	February	March	April	May	June	July	August	September	October	November	December	Average <sup>1</sup>
Commercial vegetables 1910-1914 = 100													
2008 ...	985	846	962	1157	1100	1091	1022	1030	1248	1278	1109	1078	1076
2009 ...	1239	992	1077	1256	1010	1106	967	1001	963	1196	1544	1489	1153
2010 ...	1060	1054	1501	1357	1226	1087	1069	1079	1061	1018	1311	1106	1161
2011 ...	1384	1946	1523	1128	1213	1183	1162	972	989	888	1134	975	1208
2012 ...	857												857
Commercial vegetables 1990-1992 = 100													
2008 ...	138	118	135	162	154	153	143	144	175	179	155	151	151
2009 ...	173	139	151	176	141	155	135	140	135	167	216	208	161
2010 ...	148	147	210	190	172	152	150	151	149	142	183	155	162
2011 ...	194	272	213	158	170	166	163	136	138	124	159	136	169
2012 ...	120												120
Potatoes & dry beans 1910-1914 = 100													
2008 ...	667	699	705	756	820	901	957	941	795	710	792	826	797
2009 ...	831	791	819	824	812	821	769	756	718	647	661	682	761
2010 ...	683	696	697	738	768	712	713	694	643	624	699	828	708
2011 ...	770	799	915	955	959	992	1178	910	797	725	810	853	889
2012 ...	887												887
Potatoes & dry beans 1990-1992 = 100													
2008 ...	132	138	139	149	162	178	189	186	157	140	156	163	157
2009 ...	164	156	162	163	160	162	152	149	142	128	130	135	150
2010 ...	135	137	138	146	152	141	141	137	127	123	138	163	140
2011 ...	152	158	181	188	189	196	232	180	157	143	160	168	175
2012 ...	175												175

See footnote(s) at end of table.

--continued

## Prices Received Indexes Monthly and Annual Average – United States: 2008-2012 (continued)

[Revised historical price indexes for months not shown are available at [www.nass.usda.gov](http://www.nass.usda.gov). Blank cells indicate estimation period has not begun]

Year	January	February	March	April	May	June	July	August	September	October	November	December	Average <sup>1</sup>
	Other crops 1910-1914 = 100												
2008 ...	602	602	602	602	602	602	603	603	607	607	607	607	604
2009 ...	607	607	607	607	607	607	607	607	609	613	613	613	609
2010 ...	613	613	613	613	613	613	613	613	626	640	640	640	621
2011 ...	643	643	643	643	643	643	643	643	643	643	643	643	643
2012 ...	644												644
	Other crops 1990-1992 = 100												
2008 ...	122	122	122	122	122	122	123	123	123	123	123	123	123
2009 ...	123	123	123	123	123	123	123	123	124	125	125	125	124
2010 ...	124	124	124	124	124	124	124	124	127	130	130	130	126
2011 ...	131	131	131	131	131	131	131	131	131	131	131	131	131
2012 ...	131												131
	Food commodities 1990-1992 = 100												
2008 ...	145	144	144	143	148	155	156	153	152	149	139	133	147
2009 ...	134	122	122	127	126	130	128	124	125	132	135	137	128
2010 ...	134	131	137	135	138	135	139	142	141	146	149	148	140
2011 ...	159	163	168	166	165	171	172	172	167	173	172	169	168
2012 ...	171												171

See footnote(s) at end of table.

--continued

**Prices Received Indexes Monthly and Annual Average – United States: 2008-2012 (continued)**

[Revised historical price indexes for months not shown are available at [www.nass.usda.gov](http://www.nass.usda.gov). Blank cells indicate estimation period has not begun]

Year	January	February	March	April	May	June	July	August	September	October	November	December	Average <sup>1</sup>
Livestock and products 1910-1914 = 100													
2008 ...	988	1004	990	978	1026	1048	1059	1053	1021	975	944	911	1000
2009 ...	878	836	832	861	863	854	859	833	831	843	882	917	857
2010 ...	930	937	974	978	1004	987	1008	1024	1028	1024	1030	1030	996
2011 ...	1052	1104	1167	1195	1163	1171	1187	1214	1163	1179	1202	1201	1166
2012 ...	1193												1193
Livestock and products 1990-1992 = 100													
2008 ...	129	131	129	128	134	137	138	137	133	127	123	119	130
2009 ...	115	109	109	112	113	111	112	109	108	110	115	120	112
2010 ...	121	122	127	128	131	129	132	134	134	134	134	134	130
2011 ...	137	144	152	156	152	153	155	158	152	154	157	157	152
2012 ...	156												156
Meat animals 1910-1914 = 100													
2008 ...	1132	1171	1144	1157	1256	1252	1285	1325	1263	1178	1114	1058	1195
2009 ...	1075	1067	1067	1120	1117	1078	1086	1060	1050	1048	1064	1067	1075
2010 ...	1119	1156	1218	1300	1325	1260	1274	1308	1308	1261	1243	1295	1256
2011 ...	1421	1462	1539	1607	1537	1490	1543	1559	1521	1593	1611	1594	1540
2012 ...	1638												1638
Meat animals 1990-1992 = 100													
2008 ...	111	115	112	114	123	123	126	130	124	116	109	104	117
2009 ...	106	105	105	110	110	106	107	104	103	103	104	105	106
2010 ...	110	113	120	128	130	124	125	128	128	124	122	127	123
2011 ...	140	144	151	158	151	146	152	153	149	156	158	156	151
2012 ...	161												161

See footnote(s) at end of table.

--continued

## Prices Received Indexes Monthly and Annual Average – United States: 2008-2012 (continued)

[Revised historical price indexes for months not shown are available at [www.nass.usda.gov](http://www.nass.usda.gov). Blank cells indicate estimation period has not begun]

Year	January	February	March	April	May	June	July	August	September	October	November	December	Average <sup>1</sup>
	Dairy products 1910-1914 = 100												
2008 ...	1261	1175	1114	1114	1132	1188	1194	1132	1120	1095	1052	954	1128
2009 ...	818	714	720	732	714	695	695	745	800	880	948	1015	790
2010 ...	991	972	911	898	923	948	978	1028	1089	1138	1101	1028	1000
2011 ...	1028	1175	1255	1206	1206	1304	1348	1354	1298	1224	1255	1218	1239
2012 ...	1181												1181
	Dairy products 1990-1992 = 100												
2008 ...	157	146	139	139	141	148	149	141	139	136	131	119	140
2009 ...	102	89	90	91	89	87	87	93	100	109	118	126	98
2010 ...	123	121	113	112	115	118	122	128	136	142	137	128	124
2011 ...	128	146	156	150	150	162	168	168	162	152	156	152	154
2012 ...	147												147
	Poultry & eggs 1910-1914 = 100												
2008 ...	417	435	445	415	418	433	431	423	417	417	418	416	424
2009 ...	419	395	384	394	399	412	407	372	362	357	384	400	390
2010 ...	422	412	452	409	420	424	434	424	412	426	457	438	428
2011 ...	395	400	421	444	435	435	421	450	414	418	434	454	427
2012 ...	427												427
	Poultry & eggs 1990-1992 = 100												
2008 ...	148	155	158	148	149	154	154	151	149	149	149	148	151
2009 ...	149	141	137	140	142	147	145	133	129	127	137	142	139
2010 ...	150	147	161	146	150	151	155	151	147	152	163	156	152
2011 ...	141	142	150	158	155	155	150	160	148	149	154	162	152
2012 ...	152												152

<sup>1</sup> Simple average required for parity regulations. Weighted 1990-1992 average equals 100. Average is year-to-date for current year.

## Reliability of Prices Received Estimates

**Definition:** Prices received represent sales from producers to first buyers. They include all grades and qualities. The average commodity price from the survey multiplied by the total quantity marketed theoretically should give the total cash receipts for the commodity.

**Survey procedures:** Primary sales data used to determine grain prices were obtained from probability samples of about 1900 mills and elevators. These procedures ensure that virtually all grain moving into commercial channels has a chance of being included in the survey. Generally, States surveyed account for 90 percent or more of total United States production. Livestock prices are obtained from packers, stockyards, auctions, dealers, and market check data from AMS-USDA, private marketing organizations, and state commodity groups and agencies. Inter-farm sales of grain and livestock are not included since they represent very small percentages of the total marketings. Grain marketed for seed is also excluded. Fruit and vegetable prices are obtained from sample surveys and market check data from AMS-USDA, private marketing organizations, state agencies, and universities.

**Summary and estimation procedures:** Survey quantities sold are expanded by strata to state levels and used to weight average strata prices to a state average. State prices are then weighted to a United States price based on expanded marketings. Recommendations are prepared by the State Field Offices and reviewed by the Agricultural Statistics Board in Washington, D.C. State recommendations are reviewed for reasonableness with survey data, other States, and recent historic estimates.

**Revisions:** For most items, the current month's preliminary price represents a 3-5 day period around the 15th of the month. Previous month's prices represent actual dollars received for quantities sold during the entire month. Revisions are published in monthly issues of Agricultural Prices.

**Reliability:** United States price estimates based on probability surveys generally have a sampling error of less than one percent for the major commodities such as corn, wheat, soybeans, cotton, and rice. Current methods of summarization for non-probability commodities are not designed directly to calculate sampling errors. However, analytical measures approximate the United States relative sampling errors at around five percent. Any nonsampling errors are attributed to such things as the inability to obtain correct information, differences in interpreting questions or definitions, mistakes in coding or processing the data, etc. Efforts are made at each step in the survey process to minimize these nonsampling errors.

## Prices Paid by Farmers

The January Index of Prices Paid for Commodities and Services, Interest, Taxes, and Farm Wage Rates (PPITW) at 207 (1990-1992=100), up 1.0 percent from December 2011 and up 6.2 percent from January 2011.

**Production index:** The January index, at 219, increased 0.9 percent from last month and 7.4 percent from last year. Higher prices in January for feeder cattle, interest expenses, taxes, and land rent offset lower prices for complete feeds, LP gas, concentrates, and diesel.

**Feed:** The January index, at 217, decreased 1.4 percent from December but increased 6.4 percent from last January. Since December, prices for complete feeds and concentrates were lower.

**Livestock and poultry:** The January index, at 174, increased 3.6 percent from last month and 15 percent from last year. Since December, prices for feeder cattle were higher. The January feeder cattle price, at \$151.40 per cwt, is up \$5.20 per cwt from the December price. January feeder pigs averaged \$178.00 per cwt, up \$20.00 per cwt from December.

**Fertilizer:** The January index, at 348, is up 0.3 percent from December and 14 percent above January a year ago. Since December, higher prices for nitrogen more than offset lower prices for potash & phosphate and mixed fertilizer.

**Chemicals:** The January index, at 152, increased 2.0 percent from December and 5.6 percent from last January. Compared with last month, prices for herbicides, insecticides, and fungicides/other were slightly higher.

**Fuels:** The January index, at 350, is down 1.4 percent from a month earlier but 9.4 percent above January 2011. Compared with last month, prices for LP gas and diesel are lower.

**Machinery:** The January index, at 245, is unchanged from December but is 3.4 percent above last January. Compared with last month, prices are higher for other machinery but lower for self-propelled machinery.

**Consumer price index:** The December 2011 Consumer Price Index, as issued by the Bureau of Labor Statistics, for all urban consumers (CPIU) decreased 0.3 percent before seasonal adjustment to a level of 225.672 (1982-1984=100). The November index is 226.230. For the 12 month period ending in December, the overall index increased 3.0 percent.

## Prices Paid Indexes and Related Parity Ratios – United States: January 2012 with Comparisons

[Revised historical price indexes for months not shown are available at [www.nass.usda.gov](http://www.nass.usda.gov)]

Indexes and ratios	1910-1914 Base			1990-1992 Base		
	January 2011	December 2011	January 2012	January 2011	December 2011	January 2012
	(percent)	(percent)	(percent)	(percent)	(percent)	(percent)
Prices paid by farmers for commodities, services, interest, taxes, and wage rates (PPITW) .....	2596	2727	2760	195	205	207
Production .....	1976	2106	2128	204	217	219
Feed .....	996	1076	1058	204	220	217
Livestock & poultry .....	1924	2147	2228	151	168	174
Seeds .....	3082	3327	3327	311	336	336
Fertilizer .....	1119	1272	1276	305	347	348
Chemicals .....	891	923	938	144	149	152
Fuels .....	2468	2739	2704	320	355	350
Supplies & repairs .....	1151	1197	1198	162	169	169
Autos & trucks .....	3026	3090	3095	114	116	116
Machinery .....	5937	6139	6137	237	245	245
Building materials .....	2277	2344	2347	168	172	173
Services & rent .....	2112	2125	2176	(NA)	(NA)	(NA)
Services .....	(NA)	(NA)	(NA)	163	164	166
Rent .....	(NA)	(NA)	(NA)	205	205	212
Interest <sup>1</sup> .....	3381	3381	3635	135	135	145
Taxes <sup>2</sup> .....	5935	5935	6225	222	222	232
Wage rates .....	7301	7205	7205	195	193	193
Production, interest, taxes, and wage rates (PITW) .....	2696	2843	2883	201	212	215
Family living-CPI <sup>3</sup> .....	2092	2143	2138	163	167	167
Ratio (received/paid) .....	(NA)	(NA)	(NA)	85	87	90
Parity ratio <sup>4</sup> .....	41	42	43	(NA)	(NA)	(NA)
Parity ratio adjusted <sup>5</sup> .....	42	43	44	(NA)	(NA)	(NA)
PPITW adjusted for productivity <sup>6</sup> .....	1448	1467	1466	(NA)	(NA)	(NA)
Crop sector (PPITW) .....	(NA)	(NA)	(NA)	205	215	218
Livestock sector (PPITW) .....	(NA)	(NA)	(NA)	184	194	196
Farm sector (production) .....	(NA)	(NA)	(NA)	203	221	223
Non-farm sector (production) .....	(NA)	(NA)	(NA)	204	215	217

(NA) Not available.

<sup>1</sup> Interest per acre on farm real estate debt and interest rate on farm non-real estate debt.

<sup>2</sup> Farm real estate taxes payable per acre.

<sup>3</sup> Bureau of Labor Statistics, Consumer Price Index for all urban consumers (CPI-U), for the previous month converted by the USDA.

<sup>4</sup> Ratio of index of prices received to PPITW (1910-1914=100).

<sup>5</sup> Based on estimated cash receipts, from marketings and government payments, the preliminary adjustment factor is 1.044 for 2012 and the revised factor is 1.041 for 2011.

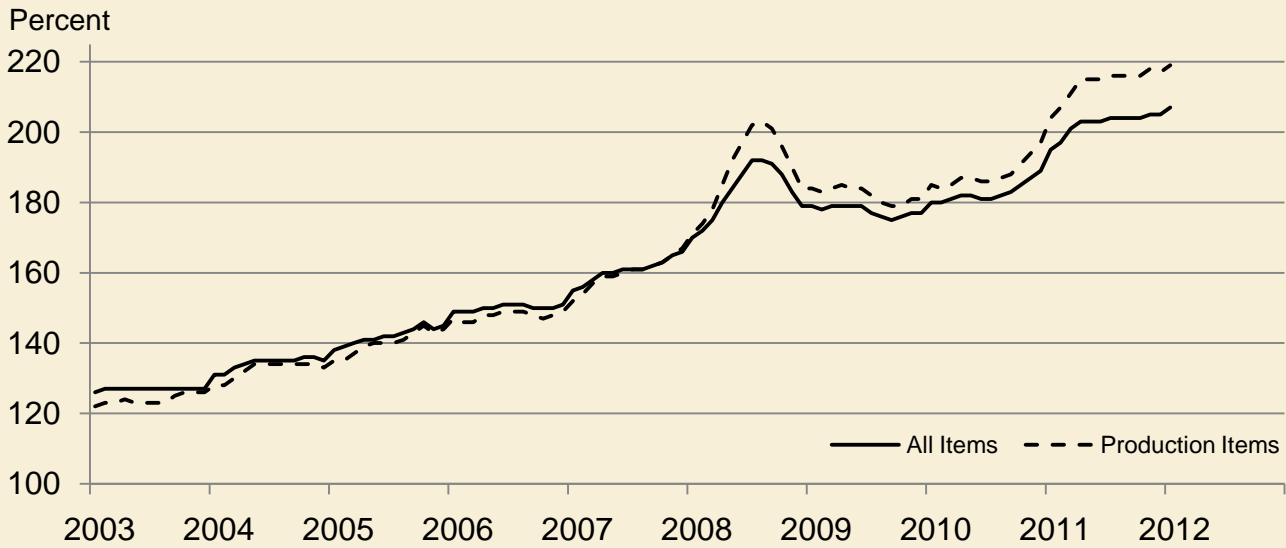
<sup>6</sup> PPITW is adjusted based on productivity trend for the prior 15 years.

## Prices Paid Indexes and Annual Weights for Input Components and Sub-Components – United States: January 2012 with Comparisons

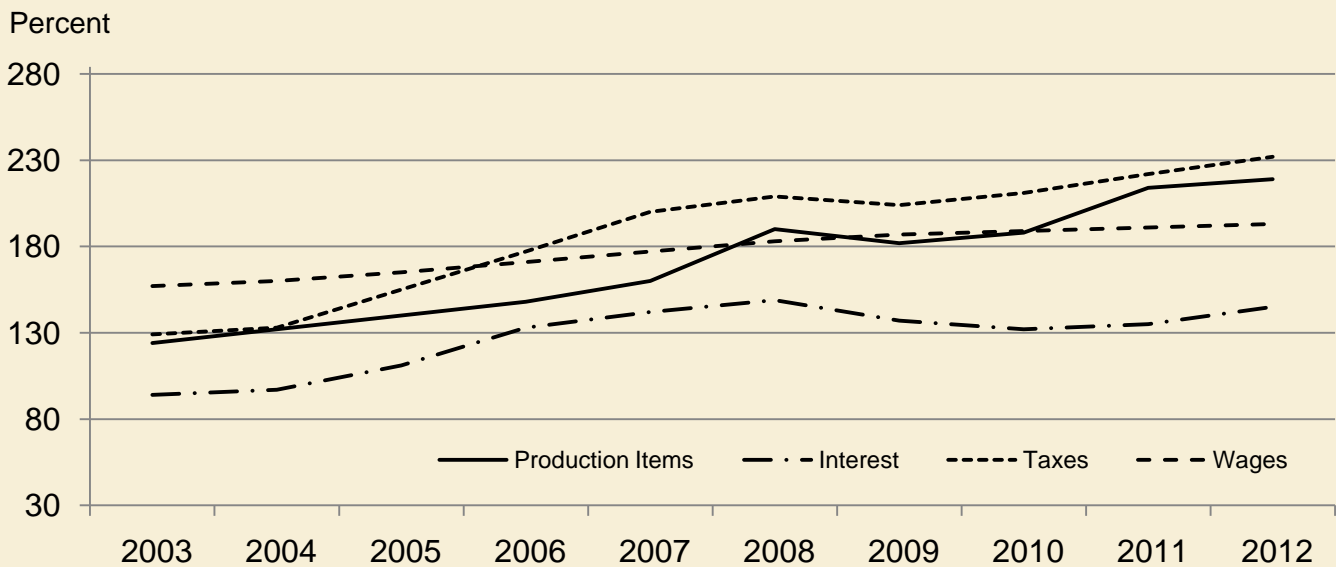
[Revised historical price indexes for months not shown are available at [www.nass.usda.gov](http://www.nass.usda.gov). Relative weights are a five year moving average]

	Relative weights		Indexes (1990-1992=100)		
	2011	2012	January 2011	December 2011	January 2012
	(percent)	(percent)	(percent)	(percent)	(percent)
Production items .....	70.6	71.1	204	217	219
Feed .....	12.2	12.7	204	220	217
Feed grains .....	1.7	1.8	215	253	254
Complete feeds .....	6.0	6.2	208	219	215
Hay & forages .....	1.5	1.6	150	225	220
Concentrates .....	1.9	2.0	213	179	171
Supplements .....	1.0	1.1	230	243	245
Livestock & poultry .....	8.5	8.3	151	168	174
Feeder cattle .....	6.6	6.5	149	173	179
Feeder pigs .....	0.7	0.7	199	172	194
Milk cow replacements .....	0.7	0.7	115	131	129
Poultry .....	0.5	0.5	151	151	151
Seeds .....	4.1	4.3	311	336	336
Field crops .....	3.7	3.9	329	356	356
Grasses & legumes .....	0.4	0.4	139	145	145
Fertilizer .....	5.5	5.7	305	347	348
Mixed fertilizer .....	2.4	2.5	292	326	325
Nitrogen .....	2.3	2.4	284	358	363
Potash & phosphate .....	0.8	0.8	410	382	376
Chemicals .....	3.3	3.2	144	149	152
Herbicides .....	2.1	2.0	130	134	136
Insecticides .....	0.7	0.7	166	173	175
Fungicides & other .....	0.5	0.5	172	180	183
Fuels .....	4.0	4.0	320	355	350
Diesel .....	2.5	2.5	347	398	395
Gasoline .....	0.8	0.8	269	283	292
LP gas .....	0.7	0.7	282	283	259
Supplies & repairs .....	4.6	4.6	162	169	169
Supplies .....	1.5	1.5	158	164	165
Repairs .....	3.0	3.0	164	171	171
Autos & trucks .....	1.4	1.2	114	116	116
Autos .....	0.2	0.2	111	115	115
Trucks .....	1.2	1.1	114	116	117
Machinery .....	4.3	4.3	237	245	245
Tractors .....	0.9	0.9	201	206	206
Self-propelled .....	1.7	1.7	248	254	252
Other machinery .....	1.6	1.6	245	257	259
Building materials .....	4.4	4.2	168	172	173
Services .....	12.1	12.0	163	164	166
Custom rates .....	1.2	1.2	148	148	148
Other services .....	10.9	10.7	164	166	168
Rent .....	6.3	6.6	205	205	212
Cash .....	3.4	3.5	262	262	270
Share .....	2.9	3.0	139	139	145
Interest .....	3.5	3.4	135	135	145
Taxes .....	3.1	3.1	222	222	232
Wage rates .....	7.4	7.2	195	193	193
Family living-CPI .....	15.4	15.3	163	167	167

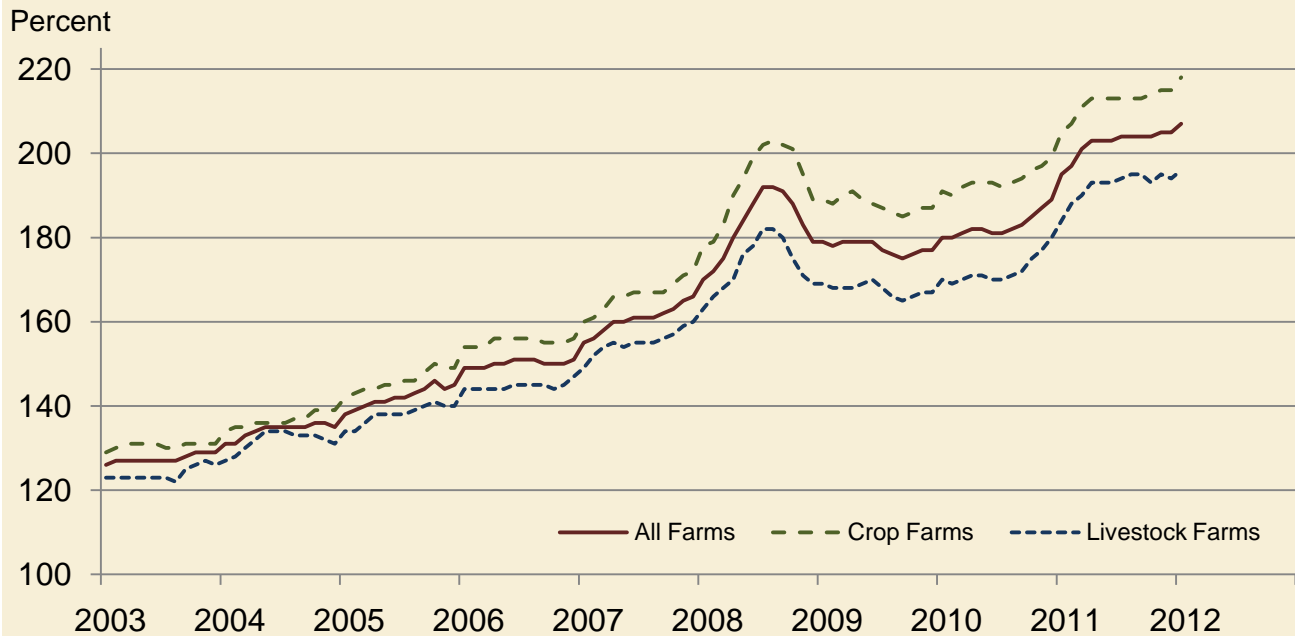
### Paid Indexes by Month, All Items and Production Items – United States: 1990-1992=100



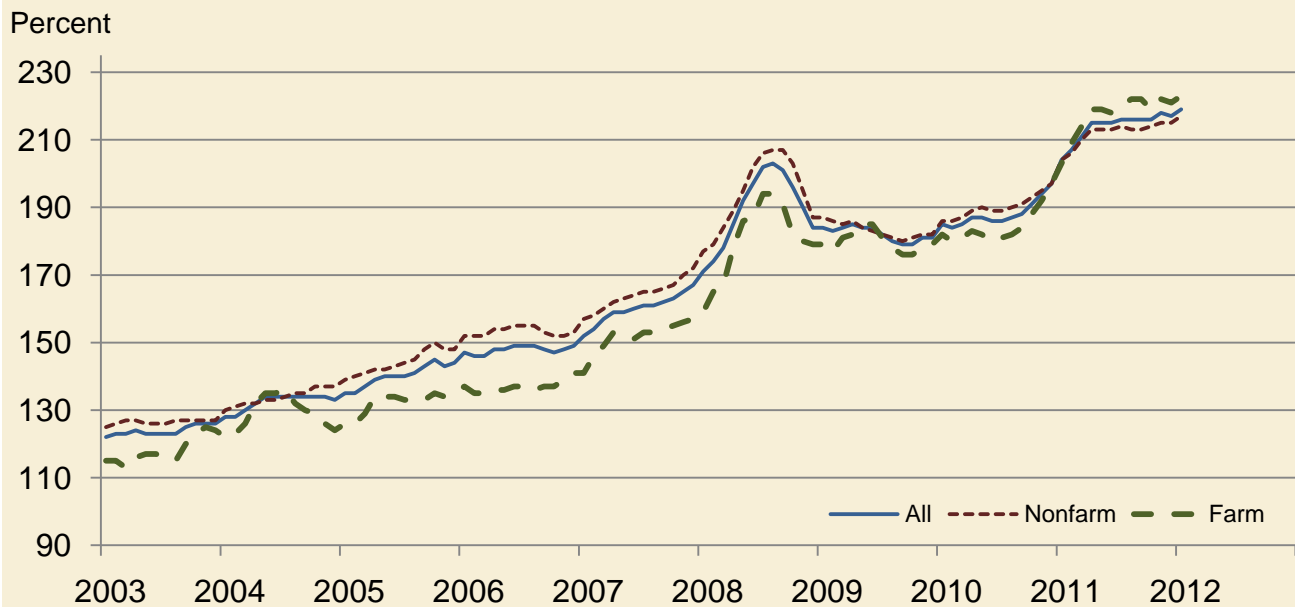
### Paid Indexes, Annual Averages, Production Items, Interest, Taxes, and Wages – United States: 1990-1992=100



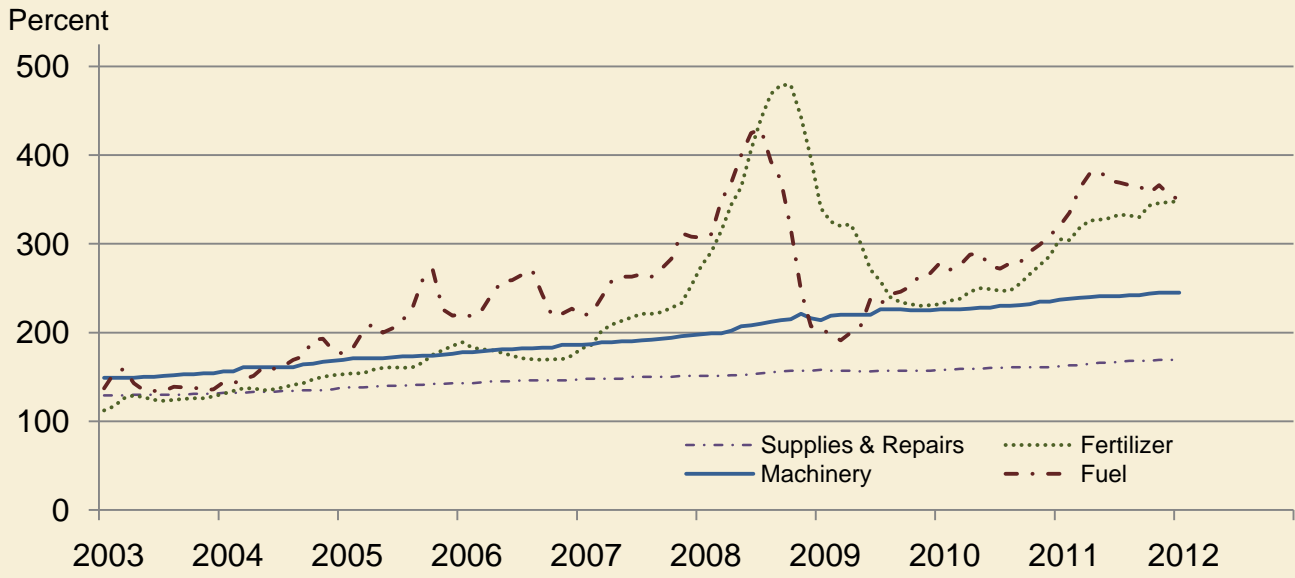
## Paid Indexes by Farm Type and Month, All Items – United States: 1990-1992=100



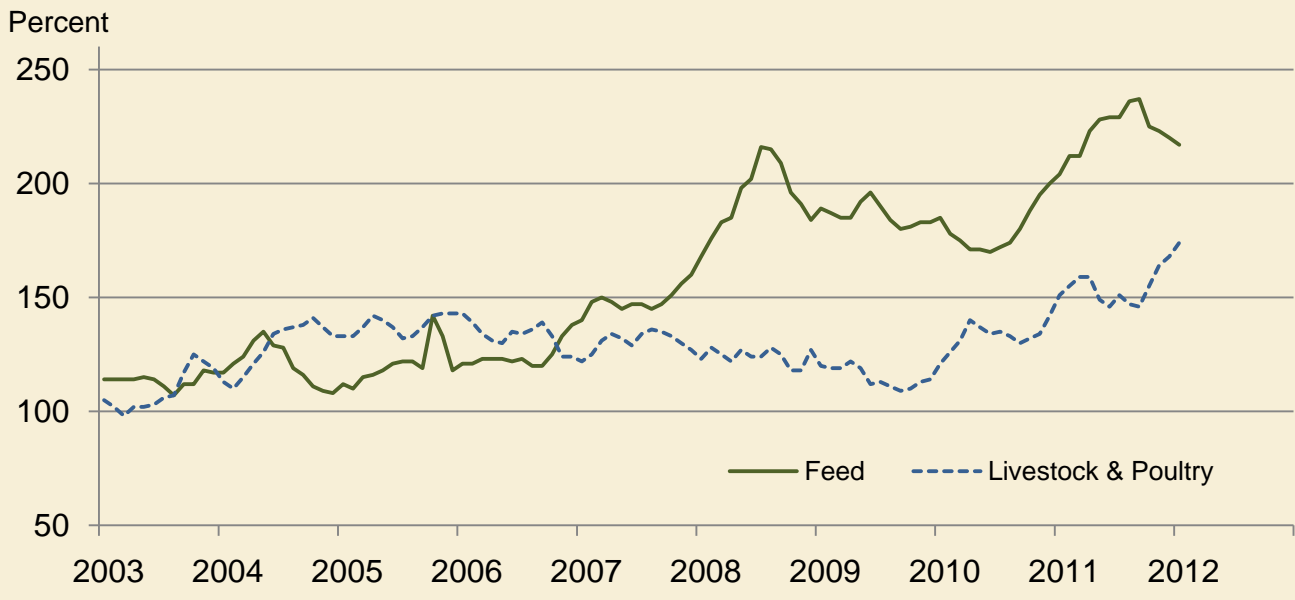
## Paid Indexes by Origin and Month, All Production Items – United States: 1990-1992=100



### Paid Indexes by Non-Farm Sector and Month, Supplies & Repairs, Fertilizer, Machinery, and Fuel – United States: 1990-1992=100



### Paid Indexes by Month, Feed and Livestock & Poultry – United States: 1990-1992=100



## Feed Price Ratios – United States: January 2012 with Comparisons

Feed price ratio <sup>1</sup>	January 2011	December 2011	Preliminary January 2012
Broiler-feed: pounds of broiler grower feed equal in value to 1 pound of broiler, live weight <sup>2</sup> .....	3.4	3.3	3.4
Market egg feed: pounds of laying feed equal in value to 1 dozen eggs <sup>3</sup> .....	5.8	8.7	5.2
Hog-corn: bushels of corn equal in value to 100 pounds of hog, live weight .....	11.3	10.8	10.6
Milk-feed: pounds of 16% mixed dairy feed equal in value to 1 pound of whole milk <sup>4</sup> .....	1.96	1.81	1.77
Steer & heifer-corn: bushels of corn equal in value to 100 pounds of steer & heifers, live weight .....	22.3	21.5	21.9
Turkey-feed: pounds of turkey grower equal in value to 1 pound of turkey, live weight <sup>5</sup> .....	4.6	5.4	5.0

<sup>1</sup> Effective January 1995, prices of commercial prepared feeds are based on current United States prices received for corn, soybeans, alfalfa hay, and all wheat.

<sup>2</sup> The price of commercial prepared broiler feed is based on current United States prices received for corn and soybeans. The modeled feed uses 58 percent corn and 42 percent soybeans.

<sup>3</sup> The price of commercial prepared layer feed is based on current United States prices received for corn and soybeans. The modeled feed uses 75 percent corn and 25 percent soybeans.

<sup>4</sup> The price of commercial prepared dairy feed is based on current United States prices received for corn, soybeans, and alfalfa. The modeled feed uses 51 percent corn, 8 percent soybeans, and 41 percent alfalfa.

<sup>5</sup> The price of commercial prepared turkey feed is based on current United States prices received for corn, soybeans, and wheat. The modeled feed used 51 percent corn, 28 percent soybeans, and 21 percent wheat.

## Prices Received Used to Calculate Feed Price Ratios – United States: January 2012 with Comparisons

[Price data source for livestock and poultry commodities is United States Department of Agriculture's Agriculture Marketing Service]

Item	January 2011	December 2011	Preliminary January 2012
	(dollars)	(dollars)	(dollars)
Broilers, live ..... pound	0.450	0.470	0.490
Eggs, market .....dozen	0.660	1.100	0.667
Hogs, all .....cwt	55.80	63.50	62.40
Milk, all .....cwt	16.70	19.80	19.20
Steers and heifers .....cwt	110.00	126.00	129.00
Turkeys, live ..... pound	0.564	0.714	0.660
Corn .....bushel	4.94	5.86	5.90
Hay, alfalfa ..... ton	121.00	199.00	192.00
Soybeans .....bushel	11.60	11.50	11.70
Wheat, all .....bushel	6.69	7.19	6.86

## Prices Paid for Feeder Livestock – United States: January 2012 with Comparisons

[Price data source is United States Department of Agriculture's Agriculture Marketing Service]

Item	January 2011	December 2011	Preliminary January 2012
	(dollars)	(dollars)	(dollars)
Feeder cattle & calves .....cwt	126.30	146.20	151.40
Feeder pigs .....cwt	183.00	158.00	178.00

## Grazing Fee Rates for Cattle – States, Regions, and United States: 2010 and 2011

State	Survey average rates <sup>1</sup>					
	Animal unit <sup>2</sup>		Cow-calf		Per head	
	2010	2011	2010	2011	2010	2011
	(dollars per month)	(dollars per month)	(dollars per month)	(dollars per month)	(dollars per month)	(dollars per month)
Arizona .....	9.00	9.00	12.00	(S)	11.00	12.00
California .....	16.40	17.30	20.50	21.50	17.00	18.20
Colorado .....	15.00	15.30	17.10	17.50	16.50	16.60
Idaho .....	12.00	14.50	15.00	16.50	14.00	15.00
Kansas .....	15.00	17.00	19.00	21.00	15.00	18.50
Montana .....	18.40	19.40	20.20	21.60	19.30	19.50
Nebraska .....	25.60	27.30	31.00	32.90	27.40	27.40
Nevada .....	12.50	13.00	(S)	14.00	13.00	14.00
New Mexico .....	11.50	13.00	13.50	(S)	12.50	13.00
North Dakota .....	18.10	18.00	19.80	19.80	18.50	15.50
Oklahoma .....	9.50	11.00	12.50	12.50	11.50	13.10
Oregon .....	14.20	14.80	17.00	17.30	14.00	16.50
South Dakota .....	22.90	24.20	27.00	29.00	24.50	27.00
Texas .....	11.50	14.40	12.40	13.90	13.10	13.90
Utah .....	13.10	13.20	17.00	18.60	15.50	15.80
Washington .....	12.00	12.00	15.00	14.00	13.00	13.00
Wyoming .....	16.60	17.60	19.30	20.50	17.20	18.30
17-State <sup>3</sup> .....	15.30	17.00	17.90	19.20	16.60	17.60
16-State <sup>4</sup> .....	16.70	17.90	19.90	21.10	17.90	18.90
11-State <sup>5</sup> .....	15.00	16.00	17.60	18.60	16.10	16.80
9-State <sup>6</sup> .....	15.30	17.20	17.90	19.30	16.70	17.70

(S) Insufficient number of reports to establish an estimate.

<sup>1</sup> The average rates are estimates based on survey indications of monthly lease rates for private, non-irrigated grazing land from the January Cattle Survey.

<sup>2</sup> Includes animal unit plus cow-calf rates. Cow-calf rate converted to animal unit (AUM) using (1 aum=cow-calf \*0.833).

<sup>3</sup> 17 Western States: Arizona, California, Colorado, Idaho, Kansas, Montana, Nebraska, Nevada, New Mexico, North Dakota, Oklahoma, Oregon, South Dakota, Texas, Utah, Washington, and Wyoming.

<sup>4</sup> 16 Western States: Arizona, California, Colorado, Idaho, Kansas, Montana, Nebraska, Nevada, New Mexico, North Dakota, Oklahoma, Oregon, South Dakota, Utah, Washington, and Wyoming.

<sup>5</sup> 11 Western States: Arizona, California, Colorado, Idaho, Montana, Nevada, New Mexico, Oregon, Utah, Washington, and Wyoming.

<sup>6</sup> 9 Great Plains States: Colorado, Kansas, Nebraska, New Mexico, North Dakota, Oklahoma, South Dakota, Texas, and Wyoming.

## Prices Paid Indexes Monthly and Annual Average – United States: 2008-2012

[Revised historical price indexes for months not shown are available at [www.nass.usda.gov](http://www.nass.usda.gov). Blank cells indicate estimation period has not begun]

Year	January	February	March	April	May	June	July	August	September	October	November	December	Average <sup>1</sup>
	Commodities, services, interest, taxes, and wage rates (PPITW) 1910-1914 = 100												
2008 ...	2262	2293	2334	2396	2456	2505	2552	2557	2543	2497	2433	2379	2434
2009 ...	2381	2369	2377	2386	2383	2381	2359	2341	2332	2342	2355	2358	2364
2010 ...	2401	2394	2406	2420	2422	2411	2413	2419	2432	2465	2492	2521	2433
2011 ...	2596	2626	2674	2704	2707	2703	2712	2718	2720	2718	2732	2727	2695
2012 ...	2760												2760
	Commodities, services, interest, taxes, and wage rates (PPITW) 1990-1992 = 100												
2008 ...	170	172	175	180	184	188	192	192	191	188	183	179	183
2009 ...	179	178	179	179	179	179	177	176	175	176	177	177	178
2010 ...	180	180	181	182	182	181	181	182	183	185	187	189	183
2011 ...	195	197	201	203	203	203	204	204	204	204	205	205	202
2012 ...	207												207
	Items used for production, interest, taxes, and wage rates (PITW) 1910-1914 = 100												
2008 ...	2320	2357	2404	2477	2546	2602	2656	2665	2648	2597	2527	2466	2522
2009 ...	2463	2447	2455	2464	2460	2454	2428	2406	2394	2405	2421	2425	2435
2010 ...	2472	2464	2476	2492	2494	2481	2484	2490	2505	2545	2576	2611	2507
2011 ...	2696	2730	2784	2817	2819	2815	2825	2831	2832	2831	2849	2843	2806
2012 ...	2883												2883
	Items used for production, interest, taxes, and wage rates (PITW) 1990-1992 = 100												
2008 ...	173	175	179	184	190	194	198	198	197	193	188	184	188
2009 ...	183	182	183	183	183	183	181	179	178	179	180	181	181
2010 ...	184	183	184	185	186	185	185	185	186	189	192	194	187
2011 ...	201	203	207	210	210	210	210	211	211	211	212	212	209
2012 ...	215												215

See footnote(s) at end of table.

--continued

## Prices Paid Indexes Monthly and Annual Average – United States: 2008-2012 (continued)

[Revised historical price indexes for months not shown are available at [www.nass.usda.gov](http://www.nass.usda.gov). Blank cells indicate estimation period has not begun]

Year	January	February	March	April	May	June	July	August	September	October	November	December	Average <sup>1</sup>
Items used for production 1910-1914 = 100													
2008 ...	1658	1690	1732	1800	1860	1910	1961	1969	1954	1902	1841	1787	1839
2009 ...	1788	1774	1782	1791	1787	1782	1763	1744	1734	1738	1752	1755	1766
2010 ...	1792	1785	1796	1814	1816	1805	1808	1813	1826	1854	1882	1912	1825
2011 ...	1976	2005	2052	2087	2089	2085	2094	2099	2100	2095	2110	2106	2075
2012 ...	2128												2128
Items used for production 1990-1992 = 100													
2008 ...	171	174	178	185	192	197	202	203	201	196	190	184	190
2009 ...	184	183	184	185	184	184	182	180	179	179	181	181	182
2010 ...	185	184	185	187	187	186	186	187	188	191	194	197	188
2011 ...	204	207	211	215	215	215	216	216	216	216	218	217	214
2012 ...	219												219
Feed 1910-1914 = 100													
2008 ...	820	860	891	902	968	988	1057	1048	1021	956	934	901	945
2009 ...	921	911	903	901	937	959	925	900	881	883	894	891	909
2010 ...	905	868	854	835	836	831	841	849	881	917	952	974	878
2011 ...	996	1035	1037	1086	1113	1120	1117	1151	1159	1097	1090	1076	1090
2012 ...	1058												1058
Feed 1990-1992 = 100													
2008 ...	168	176	183	185	198	202	216	215	209	196	191	184	194
2009 ...	189	187	185	185	192	196	190	184	180	181	183	183	186
2010 ...	185	178	175	171	171	170	172	174	180	188	195	200	180
2011 ...	204	212	212	223	228	229	229	236	237	225	223	220	223
2012 ...	217												217

See footnote(s) at end of table.

--continued

## Prices Paid Indexes Monthly and Annual Average – United States: 2008-2012 (continued)

[Revised historical price indexes for months not shown are available at [www.nass.usda.gov](http://www.nass.usda.gov). Blank cells indicate estimation period has not begun]

Year	January	February	March	April	May	June	July	August	September	October	November	December	Average <sup>1</sup>
Livestock & poultry 1910-1914 = 100													
2008 ...	1572	1638	1599	1562	1626	1588	1580	1639	1596	1514	1511	1617	1587
2009 ...	1539	1517	1518	1565	1516	1436	1445	1418	1399	1409	1444	1463	1472
2010 ...	1547	1611	1674	1786	1750	1709	1724	1704	1662	1684	1717	1811	1698
2011 ...	1924	1979	2027	2035	1903	1861	1934	1875	1861	1983	2099	2147	1969
2012 ...	2228												2228
Livestock & poultry 1990-1992 = 100													
2008 ...	123	128	125	122	127	124	124	128	125	118	118	127	124
2009 ...	120	119	119	122	119	112	113	111	109	110	113	114	115
2010 ...	121	126	131	140	137	134	135	133	130	132	134	142	133
2011 ...	151	155	159	159	149	146	151	147	146	155	164	168	154
2012 ...	174												174
Seeds 1910-1914 = 100													
2008 ...	2086	2086	2086	2722	2722	2722	2722	2722	2722	2722	2722	2722	2563
2009 ...	2722	2722	3008	3008	3008	3008	3008	3008	3008	3008	3008	3008	2960
2010 ...	3008	3008	3082	3082	3082	3082	3082	3082	3082	3082	3082	3082	3070
2011 ...	3082	3082	3327	3327	3327	3327	3327	3327	3327	3327	3327	3327	3286
2012 ...	3327												3327
Seeds 1990-1992 = 100													
2008 ...	211	211	211	275	275	275	275	275	275	275	275	275	259
2009 ...	275	275	304	304	304	304	304	304	304	304	304	304	299
2010 ...	304	304	311	311	311	311	311	311	311	311	311	311	310
2011 ...	311	311	336	336	336	336	336	336	336	336	336	336	332
2012 ...	336												336

See footnote(s) at end of table.

--continued

**Prices Paid Indexes Monthly and Annual Average – United States: 2008-2012 (continued)**

[Revised historical price indexes for months not shown are available at [www.nass.usda.gov](http://www.nass.usda.gov). Blank cells indicate estimation period has not begun]

Year	January	February	March	April	May	June	July	August	September	October	November	December	Average <sup>1</sup>
Fertilizer 1910-1914 = 100													
2008 ...	1007	1065	1155	1260	1333	1489	1616	1718	1755	1757	1622	1452	1436
2009 ...	1246	1191	1173	1181	1102	992	944	881	856	849	845	848	1009
2010 ...	851	866	871	903	918	914	904	907	935	975	1010	1049	925
2011 ...	1119	1116	1165	1195	1197	1204	1221	1216	1211	1257	1269	1272	1204
2012 ...	1276												1276
Fertilizer 1990-1992 = 100													
2008 ...	275	291	315	344	364	406	441	469	479	479	443	396	392
2009 ...	340	325	320	322	301	271	258	240	234	232	230	231	275
2010 ...	232	236	238	246	250	249	247	247	255	266	276	286	252
2011 ...	305	304	318	326	327	329	333	332	330	343	346	347	328
2012 ...	348												348
Chemicals 1910-1914 = 100													
2008 ...	820	822	827	833	840	854	868	871	883	889	903	899	859
2009 ...	877	915	930	941	944	913	919	895	906	914	943	954	921
2010 ...	885	885	887	892	893	895	899	900	903	900	893	887	893
2011 ...	891	895	894	893	891	888	894	897	918	920	909	923	901
2012 ...	938												938
Chemicals 1990-1992 = 100													
2008 ...	133	133	134	135	136	138	140	141	143	144	146	145	139
2009 ...	142	148	150	152	153	148	149	145	146	148	153	154	149
2010 ...	143	143	143	144	144	145	145	146	146	146	144	144	144
2011 ...	144	145	145	144	144	144	145	145	148	149	147	149	146
2012 ...	152												152

See footnote(s) at end of table.

--continued

**Prices Paid Indexes Monthly and Annual Average – United States: 2008-2012 (continued)**

[Revised historical price indexes for months not shown are available at [www.nass.usda.gov](http://www.nass.usda.gov). Blank cells indicate estimation period has not begun]

Year	January	February	March	April	May	June	July	August	September	October	November	December	Average <sup>1</sup>
Fuels 1910-1914 = 100													
2008 ...	2369	2400	2690	2847	3091	3282	3310	3036	2870	2443	1903	1601	2653
2009 ...	1575	1526	1476	1546	1600	1835	1788	1874	1897	1948	2048	2061	1765
2010 ...	2151	2093	2133	2224	2229	2125	2100	2147	2152	2245	2305	2387	2191
2011 ...	2468	2589	2801	2928	2952	2864	2848	2825	2818	2753	2822	2739	2784
2012 ...	2704												2704
Fuels 1990-1992 = 100													
2008 ...	307	311	349	369	400	425	429	393	372	317	247	207	344
2009 ...	204	198	191	200	207	238	232	243	246	252	265	267	229
2010 ...	279	271	276	288	289	275	272	278	279	291	299	309	284
2011 ...	320	335	363	379	382	371	369	366	365	357	366	355	361
2012 ...	350												350
Supplies & repairs 1910-1914 = 100													
2008 ...	1072	1074	1069	1076	1081	1084	1094	1100	1104	1114	1115	1115	1091
2009 ...	1119	1116	1114	1114	1109	1106	1111	1111	1111	1114	1114	1114	1113
2010 ...	1120	1124	1125	1127	1131	1133	1138	1139	1140	1141	1142	1143	1134
2011 ...	1151	1154	1155	1169	1176	1179	1187	1193	1195	1192	1196	1197	1179
2012 ...	1198												1198
Supplies & repairs 1990-1992 = 100													
2008 ...	151	151	151	152	152	153	154	155	156	157	157	157	154
2009 ...	158	157	157	157	156	156	157	157	157	157	157	157	157
2010 ...	158	158	159	159	159	160	160	161	161	161	161	161	160
2011 ...	162	163	163	165	166	166	167	168	168	168	169	169	166
2012 ...	169												169

See footnote(s) at end of table.

--continued

## Prices Paid Indexes Monthly and Annual Average – United States: 2008-2012 (continued)

[Revised historical price indexes for months not shown are available at [www.nass.usda.gov](http://www.nass.usda.gov). Blank cells indicate estimation period has not begun]

Year	January	February	March	April	May	June	July	August	September	October	November	December	Average <sup>1</sup>
	Autos & trucks 1910-1914 = 100												
2008 ...	2965	2956	2940	2922	2907	2896	2883	2847	2818	2817	2819	2818	2882
2009 ...	2841	2874	2892	2901	2909	2924	2932	2895	2903	2958	2987	2993	2917
2010 ...	2996	3004	3003	2996	2985	2979	2976	2975	2980	2989	3003	3014	2992
2011 ...	3026	3053	3067	3076	3089	3091	3084	3074	3071	3078	3084	3090	3074
2012 ...	3095												3095
	Autos & trucks 1990-1992 = 100												
2008 ...	111	111	111	110	109	109	108	107	106	106	106	106	108
2009 ...	107	108	109	109	109	110	110	109	109	111	112	113	110
2010 ...	113	113	113	113	112	112	112	112	112	112	113	113	113
2011 ...	114	115	115	116	116	116	116	116	116	116	116	116	116
2012 ...	116												116
	Machinery 1910-1914 = 100												
2008 ...	4968	4986	5005	5063	5204	5220	5277	5319	5358	5393	5543	5431	5231
2009 ...	5380	5501	5527	5523	5517	5508	5660	5662	5658	5655	5655	5652	5575
2010 ...	5677	5678	5674	5694	5717	5726	5769	5782	5802	5825	5894	5907	5762
2011 ...	5937	5982	6002	6013	6034	6034	6044	6069	6065	6110	6142	6139	6048
2012 ...	6137												6137
	Machinery 1990-1992 = 100												
2008 ...	198	199	199	202	207	208	210	212	214	215	221	216	209
2009 ...	214	219	220	220	220	220	226	226	226	225	225	225	222
2010 ...	226	226	226	227	228	228	230	230	231	232	235	235	230
2011 ...	237	238	239	240	241	241	241	242	242	244	245	245	241
2012 ...	245												245

See footnote(s) at end of table.

--continued

## Prices Paid Indexes Monthly and Annual Average – United States: 2008-2012 (continued)

[Revised historical price indexes for months not shown are available at [www.nass.usda.gov](http://www.nass.usda.gov). Blank cells indicate estimation period has not begun]

Year	January	February	March	April	May	June	July	August	September	October	November	December	Average <sup>1</sup>
Building materials 1910-1914 = 100													
2008 ...	2125	2139	2157	2188	2222	2257	2293	2327	2339	2319	2298	2272	2245
2009 ...	2263	2239	2232	2221	2217	2208	2207	2203	2208	2207	2205	2208	2218
2010 ...	2211	2224	2236	2253	2267	2258	2255	2254	2251	2251	2255	2263	2248
2011 ...	2277	2290	2305	2318	2326	2336	2347	2346	2338	2341	2340	2344	2326
2012 ...	2347												2347
Building materials 1990-1992 = 100													
2008 ...	156	157	159	161	164	166	169	171	172	171	169	167	165
2009 ...	167	165	164	163	163	163	162	162	163	162	162	163	163
2010 ...	163	164	165	166	167	166	166	166	166	166	166	167	165
2011 ...	168	169	170	171	171	172	173	173	172	172	172	172	171
2012 ...	173												173
Services & rent <sup>2</sup> 1910-1914 = 100													
2008 ...	1796	1797	1799	1805	1808	1826	1833	1836	1832	1833	1825	1825	1818
2009 ...	1980	1978	1977	1974	1974	1985	1976	1975	1975	1974	1970	1970	1976
2010 ...	2027	2025	2031	2030	2033	2043	2043	2044	2043	2040	2037	2038	2036
2011 ...	2112	2114	2119	2120	2125	2134	2132	2132	2133	2128	2125	2125	2125
2012 ...	2176												2176
Services 1990-1992 = 100													
2008 ...	143	143	144	144	145	147	148	148	148	148	147	147	146
2009 ...	157	157	156	156	156	158	156	156	156	156	156	156	156
2010 ...	160	159	160	160	160	162	162	162	162	161	161	161	161
2011 ...	163	163	164	164	164	165	165	165	165	165	164	164	164
2012 ...	166												166
Rent 1990-1992 = 100													
2008 ...	165	165	165	165	165	165	165	165	165	165	165	165	165
2009 ...	184	184	184	184	184	184	184	184	184	184	184	184	184
2010 ...	190	190	190	190	190	190	190	190	190	190	190	190	190
2011 ...	205	205	205	205	205	205	205	205	205	205	205	205	205
2012 ...	212												212

See footnote(s) at end of table.

--continued

## Prices Paid Indexes Monthly and Annual Average – United States: 2008-2012 (continued)

[Revised historical price indexes for months not shown are available at [www.nass.usda.gov](http://www.nass.usda.gov). Blank cells indicate estimation period has not begun]

Year	January	February	March	April	May	June	July	August	September	October	November	December	Average <sup>1</sup>
Interest 1910-1914 = 100													
2008 ...	3727	3727	3727	3727	3727	3727	3727	3727	3727	3727	3727	3727	3727
2009 ...	3431	3431	3431	3431	3431	3431	3431	3431	3431	3431	3431	3431	3431
2010 ...	3312	3312	3312	3312	3312	3312	3312	3312	3312	3312	3312	3312	3312
2011 ...	3381	3381	3381	3381	3381	3381	3381	3381	3381	3381	3381	3381	3381
2012 ...	3635												3635
Interest 1990-1992 = 100													
2008 ...	149	149	149	149	149	149	149	149	149	149	149	149	149
2009 ...	137	137	137	137	137	137	137	137	137	137	137	137	137
2010 ...	132	132	132	132	132	132	132	132	132	132	132	132	132
2011 ...	135	135	135	135	135	135	135	135	135	135	135	135	135
2012 ...	145												145
Taxes 1910-1914 = 100													
2008 ...	5598	5598	5598	5598	5598	5598	5598	5598	5598	5598	5598	5598	5598
2009 ...	5453	5453	5453	5453	5453	5453	5453	5453	5453	5453	5453	5453	5453
2010 ...	5646	5646	5646	5646	5646	5646	5646	5646	5646	5646	5646	5646	5646
2011 ...	5935	5935	5935	5935	5935	5935	5935	5935	5935	5935	5935	5935	5935
2012 ...	6225												6225
Taxes 1990-1992 = 100													
2008 ...	209	209	209	209	209	209	209	209	209	209	209	209	209
2009 ...	204	204	204	204	204	204	204	204	204	204	204	204	204
2010 ...	211	211	211	211	211	211	211	211	211	211	211	211	211
2011 ...	222	222	222	222	222	222	222	222	222	222	222	222	222
2012 ...	232												232
Wage rates 1910-1914 = 100													
2008 ...	6985	6985	6985	6830	6830	6830	6701	6701	6701	6927	6927	6927	6860
2009 ...	7062	7062	7062	7017	7017	7017	6888	6888	6888	7062	7062	7062	7007
2010 ...	7159	7159	7159	6991	6991	6991	6972	6972	6972	7192	7192	7192	7079
2011 ...	7301	7301	7301	7075	7075	7075	7062	7062	7062	7205	7205	7205	7161
2012 ...	7205												7205
Wage rates 1990-1992 = 100													
2008 ...	187	187	187	183	183	183	179	179	179	185	185	185	183
2009 ...	189	189	189	188	188	188	184	184	184	189	189	189	187
2010 ...	191	191	191	187	187	187	186	186	186	192	192	192	189
2011 ...	195	195	195	189	189	189	189	189	189	193	193	193	191
2012 ...	193												193

See footnote(s) at end of table.

--continued

**Prices Paid Indexes Monthly and Annual Average – United States: 2008-2012 (continued)**

[Revised historical price indexes for months not shown are available at [www.nass.usda.gov](http://www.nass.usda.gov). Blank cells indicate estimation period has not begun]

Year	January	February	March	April	May	June	July	August	September	October	November	December	Average <sup>1</sup>
Family living 1910-1914 = 100													
2008 ...	2005	2011	2028	2040	2057	2078	2089	2081	2078	2057	2018	1997	2045
2009 ...	2005	2015	2020	2025	2031	2049	2045	2050	2051	2053	2055	2051	2038
2010 ...	2058	2059	2067	2071	2072	2070	2071	2073	2075	2077	2078	2082	2071
2011 ...	2092	2102	2122	2136	2146	2144	2146	2152	2155	2150	2149	2143	2136
2012 ...	2138												2138
Family living 1990-1992 = 100													
2008 ...	157	157	158	159	161	162	163	163	162	161	158	156	160
2009 ...	157	157	158	158	159	160	160	160	160	160	160	160	159
2010 ...	161	161	161	162	162	162	162	162	162	162	162	163	162
2011 ...	163	164	166	167	168	167	168	168	168	168	168	167	167
2012 ...	167												167
Production items with farm origin <sup>3</sup> 1990-1992 = 100													
2008 ...	159	165	167	178	186	187	194	194	191	182	180	179	180
2009 ...	179	177	181	182	185	185	181	178	176	176	178	179	180
2010 ...	182	180	181	183	182	180	181	182	184	188	192	197	184
2011 ...	203	209	214	219	219	218	220	222	222	219	222	221	217
2012 ...	223												223
Production items with non-farm origin <sup>4</sup> 1990-1992 = 100													
2008 ...	177	179	184	189	195	202	206	207	207	203	195	187	194
2009 ...	187	186	185	186	184	183	182	181	180	181	182	182	183
2010 ...	186	186	187	189	190	189	189	190	191	193	195	197	190
2011 ...	204	206	210	213	213	213	214	213	213	214	215	215	212
2012 ...	217												217

See footnote(s) at end of table.

--continued

**Prices Paid Indexes Monthly and Annual Average – United States: 2008-2012 (continued)**

[Revised historical price indexes for months not shown are available at [www.nass.usda.gov](http://www.nass.usda.gov). Blank cells indicate estimation period has not begun]

Year	January	February	March	April	May	June	July	August	September	October	November	December	Average <sup>1</sup>
Year	Parity ratio <sup>5</sup> 1910-1914 = 100												
2008 ...	41	40	40	39	39	40	40	39	39	38	37	36	39
2009 ...	37	34	34	34	34	35	35	34	34	36	36	37	35
2010 ...	36	35	36	35	36	36	36	37	37	39	39	38	37
2011 ...	41	41	41	41	41	42	42	43	42	43	43	42	42
2012 ...	43												43
Year	Adjusted parity ratio <sup>6</sup> 1910-1914 = 100												
2008 ...	42	42	41	40	41	42	41	40	40	40	38	37	40
2009 ...	39	35	35	36	36	37	36	36	36	38	38	38	37
2010 ...	37	36	38	37	38	37	38	38	39	40	41	40	38
2011 ...	42	42	42	42	42	43	44	44	43	44	44	43	43
2012 ...	44												44
Year	Ratio 1990-1992 = 100												
2008 ...	85	85	83	81	83	84	83	81	81	80	78	75	82
2009 ...	78	71	70	72	72	74	73	72	72	76	76	77	74
2010 ...	76	73	76	74	76	75	76	77	78	82	82	81	77
2011 ...	85	87	86	87	86	89	89	90	88	90	90	87	88
2012 ...	90												90

See footnote(s) at end of table.

--continued

## Prices Paid Indexes Monthly and Annual Average – United States: 2008-2012 (continued)

[Revised historical price indexes for months not shown are available at [www.nass.usda.gov](http://www.nass.usda.gov). Blank cells indicate estimation period has not begun]

Year	January	February	March	April	May	June	July	August	September	October	November	December	Average <sup>1</sup>
Crop sector (PPITW) 1990-1992 = 100													
2008 ...	178	179	183	190	194	199	202	203	202	201	195	189	193
2009 ...	189	188	190	191	189	188	187	186	185	186	187	187	188
2010 ...	191	190	192	193	193	193	192	193	194	196	197	199	194
2011 ...	205	207	211	213	213	213	213	213	213	214	215	215	212
2012 ...	218												218
Livestock sector (PPITW) 1990-1992 = 100													
2008 ...	163	166	168	170	176	178	182	182	180	175	171	169	173
2009 ...	169	168	168	168	169	170	168	166	165	166	167	167	168
2010 ...	170	169	170	171	171	170	170	171	172	175	177	180	172
2011 ...	184	188	190	193	193	193	194	195	195	193	195	194	192
2012 ...	196												196
Commodities, services, interest, taxes, and wage rates Adjusted for productivity 1910-1914 = 100													
2008 ...	1442	1447	1456	1456	1468	1479	1478	1478	1475	1481	1466	1454	1465
2009 ...	1420	1420	1422	1421	1421	1423	1410	1408	1407	1421	1424	1423	1418
2010 ...	1409	1408	1410	1401	1402	1400	1399	1400	1402	1423	1427	1432	1409
2011 ...	1448	1454	1464	1454	1456	1455	1456	1457	1458	1467	1469	1467	1459
2012 ...	1466												1466

<sup>1</sup> Simple average and is year-to-date for current year.

<sup>2</sup> For the 1990-92=100 base period, the Services & Rent Index is separated.

<sup>3</sup> Feed, livestock & poultry purchases, and seed.

<sup>4</sup> Fertilizer, agricultural chemicals, fuels, supplies & repairs, autos & trucks, machinery, building materials, and services & rent.

<sup>5</sup> Ratio of index of prices received to index of prices paid for commodities, services, interest, taxes, and wage rates.

<sup>6</sup> Ratio of the index of prices received after adjustment for government payments to the index of prices paid for commodities, services, interest, taxes, and wage rates.

**Prices Paid Index Sub-Components Monthly and Annual Average –  
United States: 2008-2012**

[Revised historical price indexes for months not shown are available at [www.nass.usda.gov](http://www.nass.usda.gov). Blank cells indicate estimation period has not begun]

Year	January	February	March	April	May	June	July	August	September	October	November	December	Average <sup>1</sup>
Feed grains 1990-1992 = 100													
2008 ...	174	198	206	223	227	237	226	225	215	189	183	173	206
2009 ...	183	163	164	164	169	171	154	145	142	154	156	155	160
2010 ...	157	152	153	146	150	146	151	157	176	186	197	208	165
2011 ...	215	245	240	273	271	270	268	288	271	249	253	253	258
2012 ...	254												254
Complete feeds 1990-1992 = 100													
2008 ...	161	168	177	178	188	195	215	215	213	204	196	184	191
2009 ...	188	193	193	191	200	206	206	199	196	191	191	191	195
2010 ...	195	187	183	178	178	177	178	179	182	189	198	202	186
2011 ...	208	212	217	222	225	229	226	231	236	227	224	219	223
2012 ...	215												215
Hay & forages 1990-1992 = 100													
2008 ...	169	172	178	180	212	206	209	207	204	199	192	180	192
2009 ...	177	171	170	166	164	153	146	139	141	141	141	140	154
2010 ...	142	139	142	143	147	147	148	146	148	147	147	149	145
2011 ...	150	155	166	184	209	203	213	220	224	230	222	225	200
2012 ...	220												220
Concentrates 1990-1992 = 100													
2008 ...	174	175	180	178	199	196	221	216	197	164	178	192	189
2009 ...	190	183	179	186	197	215	199	198	188	190	193	194	193
2010 ...	190	187	183	176	182	184	190	193	187	197	209	208	190
2011 ...	213	214	204	203	205	211	209	208	212	186	187	179	203
2012 ...	171												171

See footnote(s) at end of table.

--continued

**Prices Paid Index Sub-Components Monthly and Annual Average –  
United States: 2008-2012 (continued)**

[Revised historical price indexes for months not shown are available at [www.nass.usda.gov](http://www.nass.usda.gov). Blank cells indicate estimation period has not begun]

Year	January	February	March	April	May	June	July	August	September	October	November	December	Average <sup>1</sup>
Supplements 1990-1992 = 100													
2008 ...	182	192	188	178	185	193	212	202	205	212	205	202	196
2009 ...	215	222	206	210	219	214	204	208	200	210	225	223	213
2010 ...	230	206	200	204	182	182	180	181	215	225	220	229	204
2011 ...	230	238	225	235	240	238	237	252	257	234	241	243	239
2012 ...	245												245
Feeder cattle 1990-1992 = 100													
2008 ...	117	123	119	118	124	123	123	126	122	114	110	119	120
2009 ...	112	110	109	116	117	113	116	114	111	109	111	111	112
2010 ...	115	120	125	134	131	129	132	132	127	130	134	141	129
2011 ...	149	153	157	159	151	150	156	151	151	162	171	173	157
2012 ...	179												179
Feeder pigs 1990-1992 = 100													
2008 ...	114	123	122	95	99	73	57	88	90	90	123	145	102
2009 ...	159	156	162	160	109	66	62	49	65	89	107	127	109
2010 ...	160	174	189	209	201	181	169	150	152	148	140	162	170
2011 ...	199	220	221	200	152	121	124	112	108	114	145	172	157
2012 ...	194												194
Milk cow replacements 1990-1992 = 100													
2008 ...	174	174	174	172	172	172	176	176	176	170	170	170	173
2009 ...	145	145	145	123	123	123	113	113	113	110	110	110	123
2010 ...	119	119	119	118	118	118	117	117	117	118	118	118	118
2011 ...	115	115	115	126	126	126	131	131	131	131	131	131	126
2012 ...	129												129

See footnote(s) at end of table.

--continued

**Prices Paid Index Sub-Components Monthly and Annual Average –  
United States: 2008-2012 (continued)**

[Revised historical price indexes for months not shown are available at [www.nass.usda.gov](http://www.nass.usda.gov). Blank cells indicate estimation period has not begun]

Year	January	February	March	April	May	June	July	August	September	October	November	December	Average <sup>1</sup>
Poultry 1990-1992 = 100													
2008 ...	145	145	145	145	145	145	145	145	145	145	145	145	145
2009 ...	149	149	149	149	149	149	149	149	149	149	149	149	149
2010 ...	151	151	151	151	151	151	151	151	151	151	151	151	151
2011 ...	151	151	151	151	151	151	151	151	151	151	151	151	151
2012 ...	151												151
Field crop seeds 1990-1992 = 100													
2008 ...	218	218	218	287	287	287	287	287	287	287	287	287	270
2009 ...	287	287	319	319	319	319	319	319	319	319	319	319	313
2010 ...	319	319	329	329	329	329	329	329	329	329	329	329	328
2011 ...	329	329	356	356	356	356	356	356	356	356	356	356	352
2012 ...	356												356
Grass & legume seeds 1990-1992 = 100													
2008 ...	142	142	142	157	157	157	157	157	157	157	157	157	154
2009 ...	157	157	161	161	161	161	161	161	161	161	161	161	160
2010 ...	161	161	139	139	139	139	139	139	139	139	139	139	143
2011 ...	139	139	145	145	145	145	145	145	145	145	145	145	144
2012 ...	145												145
Mixed fertilizer 1990-1992 = 100													
2008 ...	272	288	322	354	362	403	430	440	441	441	416	364	378
2009 ...	337	331	298	293	281	272	260	251	247	241	240	237	274
2010 ...	230	229	225	233	238	241	245	250	256	263	275	284	247
2011 ...	292	305	310	313	312	312	313	312	313	323	327	326	313
2012 ...	325												325

See footnote(s) at end of table.

--continued

**Prices Paid Index Sub-Components Monthly and Annual Average –  
United States: 2008-2012 (continued)**

[Revised historical price indexes for months not shown are available at [www.nass.usda.gov](http://www.nass.usda.gov). Blank cells indicate estimation period has not begun]

Year	January	February	March	April	May	June	July	August	September	October	November	December	Average <sup>1</sup>
Nitrogen 1990-1992 = 100													
2008 ...	283	294	310	322	349	375	411	434	447	443	411	396	373
2009 ...	333	276	295	308	291	263	250	219	211	215	215	212	257
2010 ...	220	227	229	242	244	241	231	229	237	255	260	273	241
2011 ...	284	286	311	323	330	338	346	345	334	351	353	358	330
2012 ...	363												363
Potash & phosphate 1990-1992 = 100													
2008 ...	257	287	311	377	410	511	566	662	693	710	622	497	492
2009 ...	369	453	463	456	394	289	274	271	261	251	247	272	333
2010 ...	275	287	301	304	310	301	298	295	306	308	326	332	304
2011 ...	410	357	361	376	363	354	359	355	372	379	387	382	371
2012 ...	376												376
Herbicides 1990-1992 = 100													
2008 ...	123	123	124	125	126	129	131	132	134	136	138	138	130
2009 ...	135	141	144	145	145	140	141	137	138	138	142	144	141
2010 ...	133	132	132	133	133	132	133	133	133	132	131	130	132
2011 ...	130	130	130	130	129	129	130	130	133	134	132	134	131
2012 ...	136												136
Insecticides 1990-1992 = 100													
2008 ...	153	153	154	156	156	157	158	158	158	158	159	157	156
2009 ...	152	157	158	161	163	158	160	157	160	162	168	171	161
2010 ...	159	160	161	163	163	164	165	166	167	166	165	165	164
2011 ...	166	167	167	167	167	166	167	168	172	172	170	173	168
2012 ...	175												175

See footnote(s) at end of table.

--continued

**Prices Paid Index Sub-Components Monthly and Annual Average –  
United States: 2008-2012 (continued)**

[Revised historical price indexes for months not shown are available at [www.nass.usda.gov](http://www.nass.usda.gov). Blank cells indicate estimation period has not begun]

Year	January	February	March	April	May	June	July	August	September	October	November	December	Average <sup>1</sup>
Fungicides & other 1990-1992 = 100													
2008 ...	141	142	143	145	146	149	152	153	155	157	160	159	150
2009 ...	156	163	165	167	169	164	166	162	164	166	173	175	166
2010 ...	163	164	165	166	167	168	170	170	172	172	171	171	168
2011 ...	172	174	174	174	174	173	174	175	179	179	177	180	175
2012 ...	183												183
Diesel 1990-1992 = 100													
2008 ...	332	339	391	413	443	465	464	421	390	344	274	231	376
2009 ...	215	204	192	206	208	237	240	250	251	257	271	268	233
2010 ...	279	275	290	305	307	296	293	299	298	310	320	331	300
2011 ...	347	369	403	419	418	406	403	398	396	392	409	398	396
2012 ...	395												395
Gasoline 1990-1992 = 100													
2008 ...	250	249	267	285	311	336	337	315	310	257	183	145	270
2009 ...	154	165	169	177	195	226	218	226	221	222	231	227	203
2010 ...	237	231	242	249	248	239	238	238	236	244	249	260	243
2011 ...	269	278	308	328	337	318	316	315	313	299	293	283	305
2012 ...	292												292
LP Gas 1990-1992 = 100													
2008 ...	286	278	279	297	343	386	419	397	393	286	222	199	315
2009 ...	242	226	226	216	228	261	214	234	262	284	302	337	253
2010 ...	339	312	263	265	262	231	221	238	248	268	269	275	266
2011 ...	282	284	284	295	309	309	310	310	317	299	296	283	298
2012 ...	259												259

See footnote(s) at end of table.

--continued

**Prices Paid Index Sub-Components Monthly and Annual Average –  
United States: 2008-2012 (continued)**

[Revised historical price indexes for months not shown are available at [www.nass.usda.gov](http://www.nass.usda.gov). Blank cells indicate estimation period has not begun]

Year	January	February	March	April	May	June	July	August	September	October	November	December	Average <sup>1</sup>
Supplies 1990-1992 = 100													
2008 ...	143	144	144	145	145	146	149	152	154	156	156	156	149
2009 ...	156	155	154	154	153	152	152	152	152	152	153	153	153
2010 ...	153	153	153	154	154	154	155	155	156	156	156	156	155
2011 ...	158	158	158	159	162	162	163	164	164	164	163	164	161
2012 ...	165												165
Repairs 1990-1992 = 100													
2008 ...	155	155	154	155	156	156	156	156	156	158	158	158	156
2009 ...	158	158	158	159	158	158	159	159	159	159	159	159	159
2010 ...	160	161	161	161	162	162	163	163	163	163	163	163	162
2011 ...	164	165	165	168	168	168	169	170	171	170	171	171	168
2012 ...	171												171
Autos 1990-1992 = 100													
2008 ...	109	109	109	108	108	108	109	108	108	108	108	108	108
2009 ...	109	109	109	109	109	109	110	108	108	110	112	112	109
2010 ...	112	111	111	111	110	110	110	110	110	110	111	111	111
2011 ...	111	112	112	113	114	115	115	115	115	115	115	115	114
2012 ...	115												115
Trucks 1990-1992 = 100													
2008 ...	112	112	111	110	109	109	108	107	106	106	106	106	108
2009 ...	107	108	109	109	109	110	110	109	109	111	112	113	110
2010 ...	113	113	113	113	113	112	112	112	112	113	113	114	113
2011 ...	114	115	116	116	116	116	116	116	116	116	116	116	116
2012 ...	117												117

See footnote(s) at end of table.

--continued

**Prices Paid Index Sub-Components Monthly and Annual Average –  
United States: 2008-2012 (continued)**

[Revised historical price indexes for months not shown are available at [www.nass.usda.gov](http://www.nass.usda.gov). Blank cells indicate estimation period has not begun]

Year	January	February	March	April	May	June	July	August	September	October	November	December	Average <sup>1</sup>
Tractors 1990-1992 = 100													
2008 ...	175	175	174	175	175	175	178	178	180	181	181	182	177
2009 ...	184	183	185	186	186	186	186	187	188	188	189	189	186
2010 ...	188	189	189	190	191	191	194	195	197	198	199	200	193
2011 ...	201	202	203	203	203	203	203	203	203	203	206	206	203
2012 ...	206												206
Self-propelled 1990-1992 = 100													
2008 ...	207	208	209	210	212	213	213	214	214	216	230	217	214
2009 ...	218	229	229	229	229	229	230	230	230	230	231	231	229
2010 ...	234	234	234	235	236	236	237	238	239	240	247	247	238
2011 ...	248	249	250	250	250	250	250	251	252	256	256	254	251
2012 ...	252												252
Other machinery 1990-1992 = 100													
2008 ...	202	203	204	209	221	222	226	230	232	234	235	236	221
2009 ...	228	230	231	230	230	229	244	243	242	242	241	241	236
2010 ...	240	240	240	240	241	241	243	243	243	243	244	244	242
2011 ...	245	248	249	250	252	252	253	255	254	254	255	257	252
2012 ...	259												259
Custom rates 1990-1992 = 100													
2008 ...	144	144	144	144	144	144	144	144	144	144	144	144	144
2009 ...	145	145	145	145	145	145	145	145	145	145	145	145	145
2010 ...	145	145	145	145	145	145	145	145	145	145	145	145	145
2011 ...	148	148	148	148	148	148	148	148	148	148	148	148	148
2012 ...	148												148

See footnote(s) at end of table.

--continued

**Prices Paid Index Sub-Components Monthly and Annual Average –  
United States: 2008-2012 (continued)**

[Revised historical price indexes for months not shown are available at [www.nass.usda.gov](http://www.nass.usda.gov). Blank cells indicate estimation period has not begun]

Year	January	February	March	April	May	June	July	August	September	October	November	December	Average <sup>1</sup>
Other services 1990-1992 = 100													
2008 ...	143	143	144	144	145	147	148	149	148	148	147	147	146
2009 ...	158	158	158	157	157	159	158	157	158	157	157	157	158
2010 ...	161	161	162	162	162	164	164	164	164	163	163	163	163
2011 ...	164	164	165	165	166	167	167	167	167	167	166	166	166
2012 ...	168												168
Cash rent 1990-1992 = 100													
2008 ...	205	205	205	205	205	205	205	205	205	205	205	205	205
2009 ...	236	236	236	236	236	236	236	236	236	236	236	236	236
2010 ...	243	243	243	243	243	243	243	243	243	243	243	243	243
2011 ...	262	262	262	262	262	262	262	262	262	262	262	262	262
2012 ...	270												270
Share rent 1990-1992 = 100													
2008 ...	118	118	118	118	118	118	118	118	118	118	118	118	118
2009 ...	124	124	124	124	124	124	124	124	124	124	124	124	124
2010 ...	129	129	129	129	129	129	129	129	129	129	129	129	129
2011 ...	139	139	139	139	139	139	139	139	139	139	139	139	139
2012 ...	145												145

<sup>1</sup> Simple average and is year-to-date for current year.

**Prices Paid Survey Estimates, Month Published and Level**

Survey	Program Schedule <sup>1/</sup>	
	Level of Estimates	Survey and Publication Month
Feed	Farm Production Regions and United States	March and April
Feeder Livestock	United States	Monthly
Seed	United States	March and April
Fertilizer	Fertilizer Regions and United States	March and April
Agricultural Chemicals	United States	March and April
Fuels	Farm Production Regions and United States	March and April
Farm Machinery	United States	March and April
Grazing Fees	States and Regions	January <sup>2/</sup>

<sup>1/</sup> Data collection and publication schedule for average prices paid by producers.

<sup>2/</sup> Survey estimates for previous year.

## Reliability of Prices Paid Estimates

**Definition:** Prices paid by farmers represent the average costs of inputs purchased by farmers and ranchers to produce agricultural commodities. Conceptually, the average price when multiplied by quantity purchased should equal total producer expenditures for the item.

**Survey procedures:** The prices paid data are obtained from establishments that sell goods and services to farmers and ranchers. Annually, about 8,500 firms are randomly selected from lists by type of item sold with an average response rate in the range of 75-80 percent. Firms are asked to report the price for the specified item "most commonly bought by farmers" or that was the "volume seller". Approximately 135 items are surveyed each March to represent all production input items purchased. The survey reference period for most items is the five business days centered around the 15th of the month. Separate prices paid surveys are conducted for agricultural chemicals, fuels, feed, fertilizer, machinery, and seed.

**Summary and estimation procedures:** The annual March Prices Paid Survey is summarized as a nonprobability survey. Average prices reported are aggregated to the region and United States level using weights available from expenditure data and other administrative sources. Price recommendations are prepared by the State Field Offices and Headquarters for review by the Agricultural Statistics Board in Washington, D.C. Also, the change in price level for individual items surveyed are combined to the regional and United States levels, and are published as prices paid indexes referenced to a specific base period. Prices paid indexes for new autos and trucks, building materials, farm supplies, motor supplies, and marketing containers are updated based on price changes measured in selected Bureau of Labor Statistics (BLS) indexes.

**Revisions:** Any revisions are published in the monthly and in annual issues of Agricultural Prices. The basis for revision must be supported by additional data that directly affect the level of the estimate. More revisions are likely for March when separate prices paid surveys are conducted, in lieu of BLS indexes, by the USDA to measure price change.

**Reliability:** Current methods of summarization for the March data are not designed directly to calculate sampling errors. However, analytical measures approximate the United States relative sampling errors for major items around 10 percent. Any nonsampling errors are attributed to such things as the inability to obtain correct information, differences in interpreting questions or definitions, mistakes in coding or processing the data, etc. Efforts are made at each step in the survey process to minimize these nonsampling errors.

**Program change:** Effective January 1, 1995, the National Agricultural Statistics Service updated the weights and changed the construction of its prices paid and received by farmers indexes. A Federal Register Notice dated October 28, 1994 discussed these program modifications.

A 1990-1992 reference and base period replaced the 1977 reference and 1971-1973 base weight period. Five-year moving average weights replaced the current fixed 1971-1973 base period weights. The 1910-1914=100 price indexes, required by statute for computing parity prices, were linked forward based on the changes in the new 1990-1992=100 indexes. The new indexes were constructed by multiplying the ratios of the current prices to the base period prices by the moving average weights (adjusted for seasonal marketing patterns for the prices received indexes).

## Information Contacts

Direct general questions to Kevin Hintzman, Acting Chief, Environmental, Economics and Demographics Branch at (202) 720-6146. Below are the commodity specialists to contact for additional information.

### Crop Prices Received

Lance Honig, Chief, Crops Branch .....	(202) 720-2127
Jacqueline Moore, Head, Field Crops Section .....	(202) 720-2127
Suzanne Avilla – Peanuts, Rice.....	(202) 720-7688
Bryan Durham – Oats, Rye, Wheat.....	(202) 720-8068
Steve Maliszewski – Cotton, Cotton Ginnings, Sorghum.....	(202) 720-5944
Anthony Prillaman – Corn, Proso Millet, Flaxseed .....	(202) 720-9526
Julie Schmidt – Crop Weather, Barley, Hay .....	(202) 720-7621
Travis Thorson – Soybeans, Sunflower, Other Oilseeds.....	(202) 720-7369
Jorge Garcia-Pratts, Head, Fruits, Vegetables and Special Crops Section.....	(202) 720-2127
Debbie Flippin – Fresh and Processing Vegetables, Onions, Strawberries.....	(202) 720-2157
Fred Granja – Apples, Apricots, Cherries, Plums, Prunes, Tobacco .....	(202) 720-4288
Erika White – Floriculture, Maple Syrup, Nursery, Tree Nuts .....	(202) 720-4215
Chris Hawthorn – Citrus, Coffee, Sugar Crops, Grapes, Tropical Fruits.....	(202) 720-5412
Daphne Schauber – Berries, Cranberries, Potatoes, Sweet Potatoes .....	(202) 720-4285
Dan Norris – Austrian Winter Peas, Dry Edible Peas, Lentils, Mints, Mushrooms, Peaches, Pears, Wrinkled Seed Peas, Dry Beans .....	(202) 720-3250

### Livestock Prices Received

Dan Kerestes, Chief, Livestock Branch .....	(202) 720-3570
Scott Hollis, Head, Livestock Section.....	(202) 720-3570
Travis Averill - Cattle .....	(202) 720-3040
Mike Miller - Milk, Milk Cows .....	(202) 720-3278
Doug Bounds - Hogs.....	(202) 720-3106
Bruce Boess, Head, Poultry and Specialty Commodities Section.....	(202) 720-3570
Cody Brokmeyer – Honey, Turkeys .....	(202) 690-3237
Kim Linonis - Eggs.....	(202) 690-8632
Miste Salmon - Broilers .....	(202) 720-3244

### Indexes, Prices Paid, and Parity Prices

Kevin Hintzman, Acting Chief, Environmental, Economics and Demographics Branch.....	(202) 720-6146
Kevin Hintzman, Head, Economics Section .....	(202) 720-6146
Daryl Brinkman - Prices Received Indexes, Parity Prices .....	(202) 720-8844
Scott Shimmin - Grazing Fees .....	(202) 690-3231
Vincent Davis - Prices Paid Indexes, Prices Paid for Feed, Fertilizer, Agricultural Chemicals, Seeds, Farm Supplies and Repairs, Farm Machinery, Fuels, Feeder Livestock, Poultry Chicks, Feed Price Ratios, Autos & Trucks.....	(202) 690-3229

## Access to NASS Reports

For your convenience, you may access NASS reports and products the following ways:

- All reports are available electronically, at no cost, on the NASS web site: <http://www.nass.usda.gov>
- Both national and state specific reports are available via a free e-mail subscription. To set-up this free subscription, visit <http://www.nass.usda.gov> and in the “Follow NASS” box under “Receive reports by Email,” click on “National” or “State” to select the reports you would like to receive.
- Printed reports may be purchased from the National Technical Information Service (NTIS) by calling toll-free (800) 999-6779, or (703) 605-6220 if calling from outside the United States or Canada. Accepted methods of payment are Visa, MasterCard, check, or money order.

For more information on NASS surveys and reports, call the NASS Agricultural Statistics Hotline at (800) 727-9540, 7:30 a.m. to 4:00 p.m. ET, or e-mail: [nass@nass.usda.gov](mailto:nass@nass.usda.gov).

The United States Department of Agriculture (USDA) prohibits discrimination in all its programs and activities on the basis of race, color, national origin, age, disability, and where applicable, sex, marital status, familial status, parental status, religion, sexual orientation, political beliefs, genetic information, reprisal, or because all or a part of an individual's income is derived from any public assistance program. (Not all prohibited bases apply to all programs.) Persons with disabilities who require alternative means for communication of program information (Braille, large print, audiotape, etc.) should contact USDA's TARGET Center at (202) 720-2600 (voice and TDD).

To file a complaint of discrimination, write to USDA, Assistant Secretary for Civil Rights, Office of the Assistant Secretary for Civil Rights, 1400 Independence Avenue, S.W., Stop 9410, Washington, DC 20250-9410, or call toll-free at (866) 632-9992 (English) or (800) 877-8339 (TDD) or (866) 377-8642 (English Federal-relay) or (800) 845-6136 (Spanish Federal-relay). USDA is an equal opportunity provider and employer.